

Wayne County, Iowa
Iowa South Zone (1402)
Horiz. Datum: NAD83(NSRS2007)
Vert. Datum: NAVD 1988
US Survey Feet
2007

Point Name: **3**

Designation: 2007-003 Wayne Co GPS Control Pt

Northing: **264412.82**sft Easting: **1627345.49**sft

Orthometric Height: **1060.87**sft Ellipsoid Height: **957.49**sft **Geoid03**

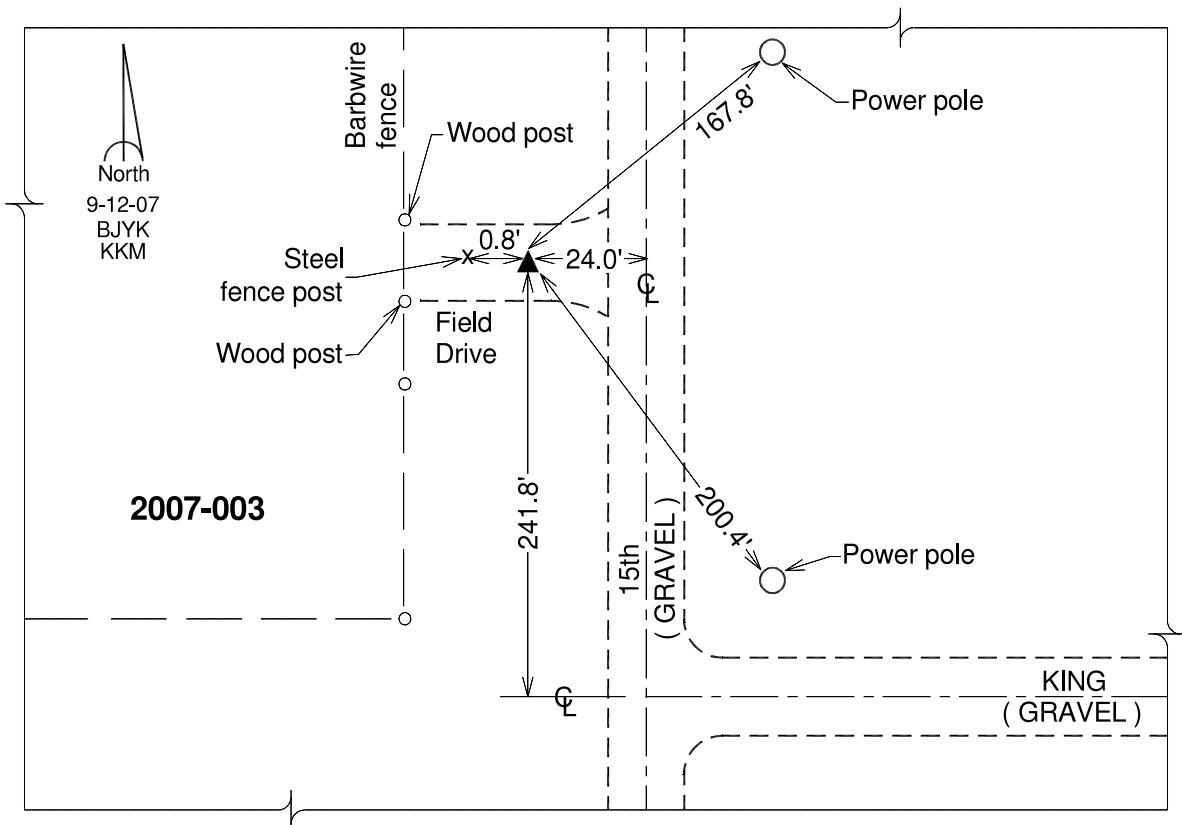
Latitude: **40°43'32.65901"N**

Longitude: **93°32'49.77405"W**

Mapping Angle: **-0°01'52"**

Combination Scale Factor: **0.99993685**

Monument Type: Berntsen 3/4" Top Security Rod Monument with a 2-1/2" dia. domed survey cap and permanent magnet encased in a white PVC pipe with a NGS style alum. access cover.



This document was prepared by DCI and GBC for use by Wayne County, Iowa.