

Wayne County, Iowa
Iowa South Zone (1402)
Horiz. Datum: NAD83(NSRS2007)
Vert. Datum: NAVD 1988
US Survey Feet
2007

Point Name: **30**

Designation: 2007-030 Wayne Co GPS Control Pt

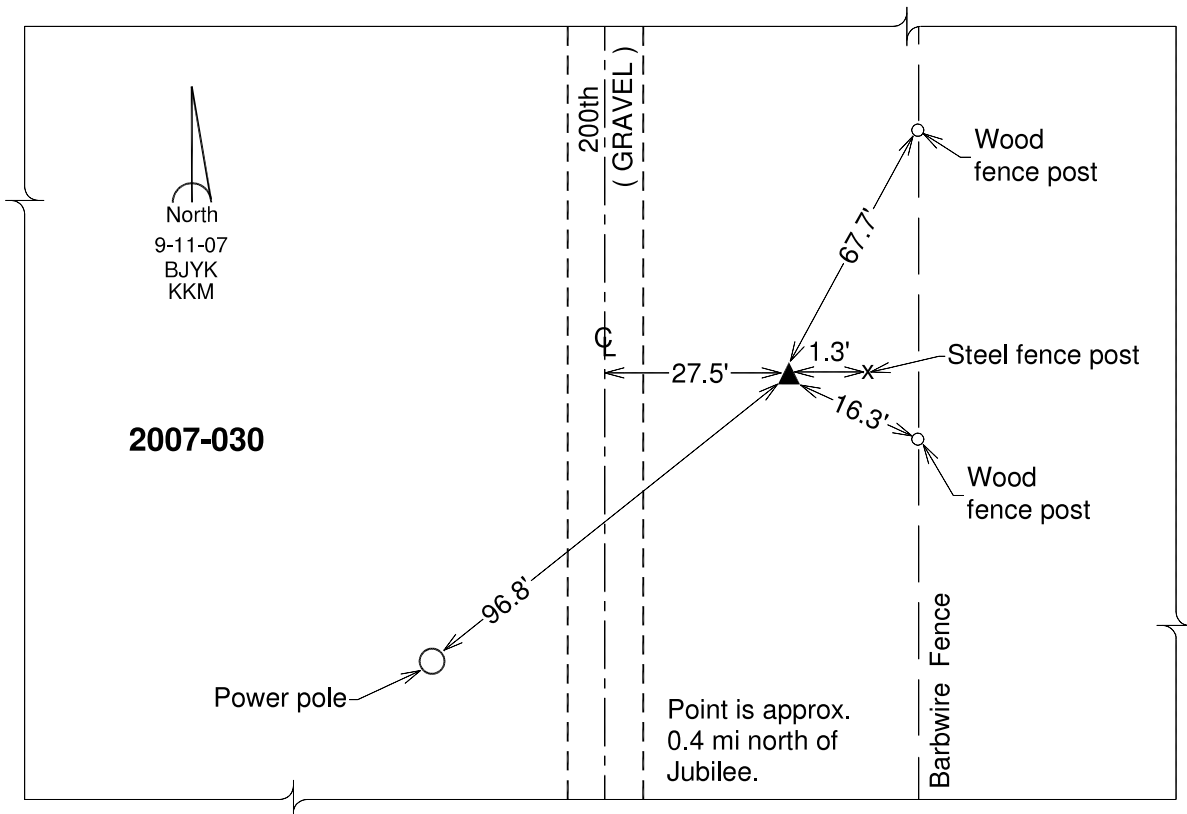
Northing: **264015.79**sft Easting: **1725666.34**sft

Orthometric Height: **1061.75**sft Ellipsoid Height: **957.96**sft **Geoid03**

Latitude: **40°43'27.28156"N** Longitude: **93°11'32.76302"W**

Mapping Angle: **0°12'09"** Combination Scale Factor: **0.99993704**

Monument Type: Berntsen 3/4" Top Security Rod Monument with a 2-1/2" dia. domed survey cap and permanent magnet encased in a white PVC pipe with a NGS style alum. access cover.



This document was prepared by DCI and GBC for use by Wayne County, Iowa.