

Wayne County, Iowa
 Iowa South Zone (1402)
 Horiz. Datum: NAD83(NSRS2007)
 Vert. Datum: NAVD 1988
 US Survey Feet
2007

Point Name: **31**

Designation: 2007-031 Wayne Co GPS Control Pt

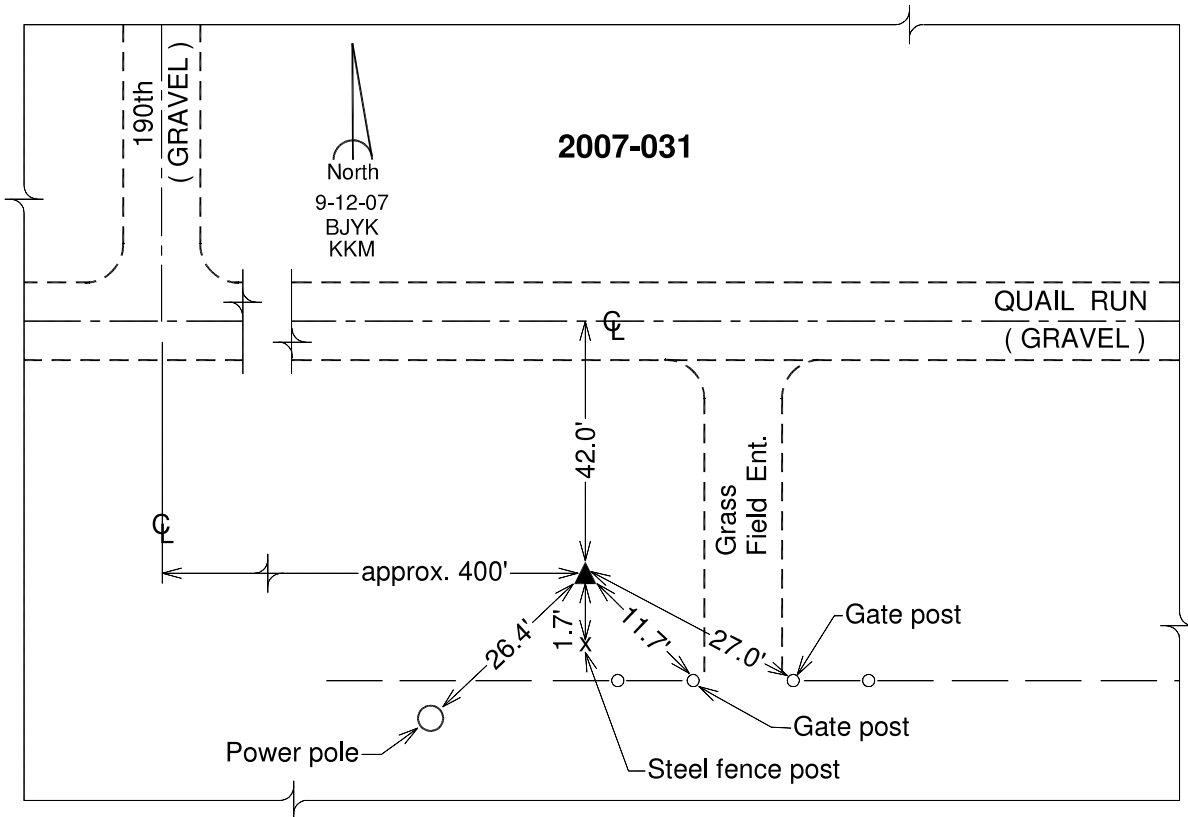
Northing: **295906.20**sft Easting: **1720580.59**sft

Orthometric Height: **1030.51**sft Ellipsoid Height: **926.82**sft **Geoid03**

Latitude: **40°48'42.56945"N** Longitude: **93°12'37.43805"W**

Mapping Angle: **0°11'27"** Combination Scale Factor: **0.99992706**

Monument Type: Berntsen 3/4" Top Security Rod Monument with a 2-1/2" dia. domed survey cap and permanent magnet encased in a white PVC pipe with a NGS style alum. access cover.



This document was prepared by DCI and GBC for use by Wayne County, Iowa.