

Wayne County, Iowa
 Iowa South Zone (1402)
 Horiz. Datum: NAD83(NSRS2007)
 Vert. Datum: NAVD 1988
 US Survey Feet
2007

Point Name: **32**

Designation: 2007-032 Wayne Co GPS Control Pt

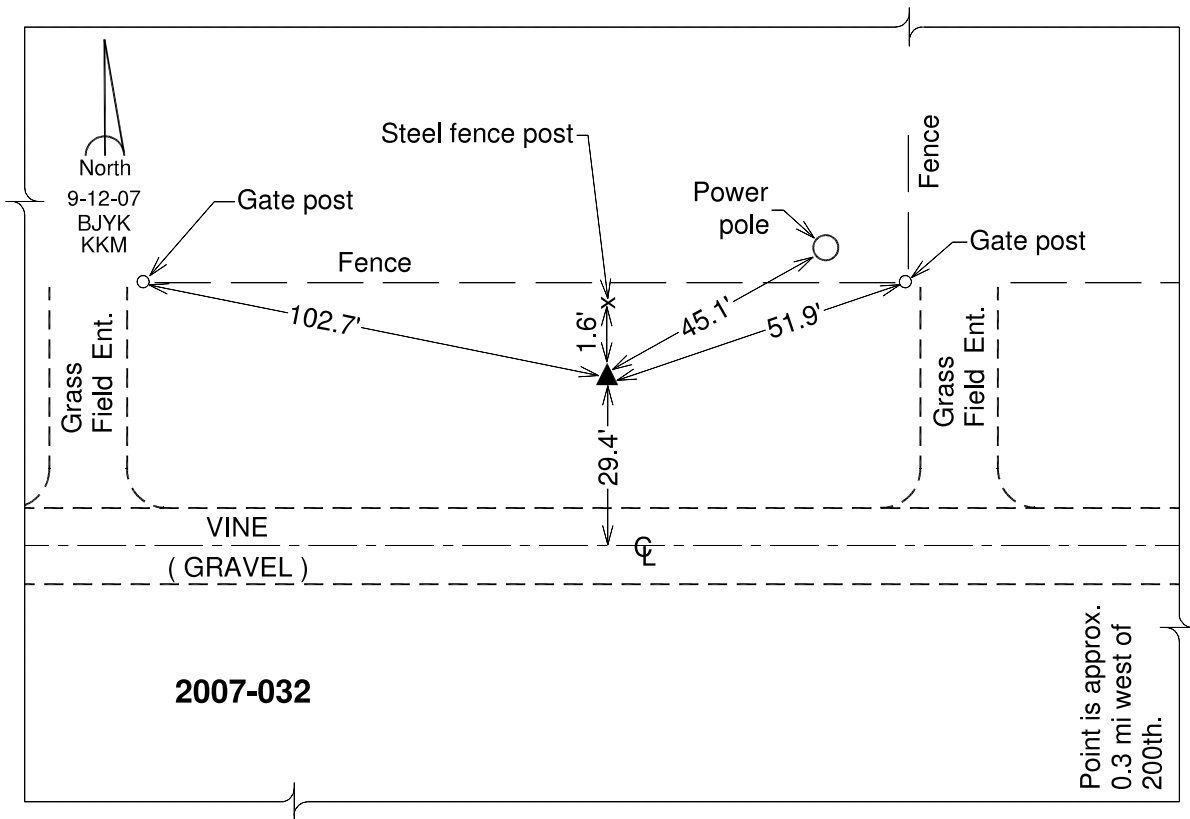
Northing: **325064.17**sft Easting: **1722308.76**sft

Orthometric Height: **1040.18**sft Ellipsoid Height: **936.63**sft **Geoid03**

Latitude: **40°53'30.62628"N** Longitude: **93°12'13.67150"W**

Mapping Angle: **0°11'42"** Combination Scale Factor: **0.99991815**

Monument Type: Berntsen 3/4" Top Security Rod Monument with a 2-1/2" dia. domed survey cap and permanent magnet encased in a white PVC pipe with a NGS style alum. access cover.



This document was prepared by DCI and GBC for use by Wayne County, Iowa.