

Wayne County, Iowa
Iowa South Zone (1402)
Horiz. Datum: NAD83(NSRS2007)
Vert. Datum: NAVD 1988
US Survey Feet
2007

Point Name: **33**

Designation: 2007-033 Wayne Co GPS Control Pt

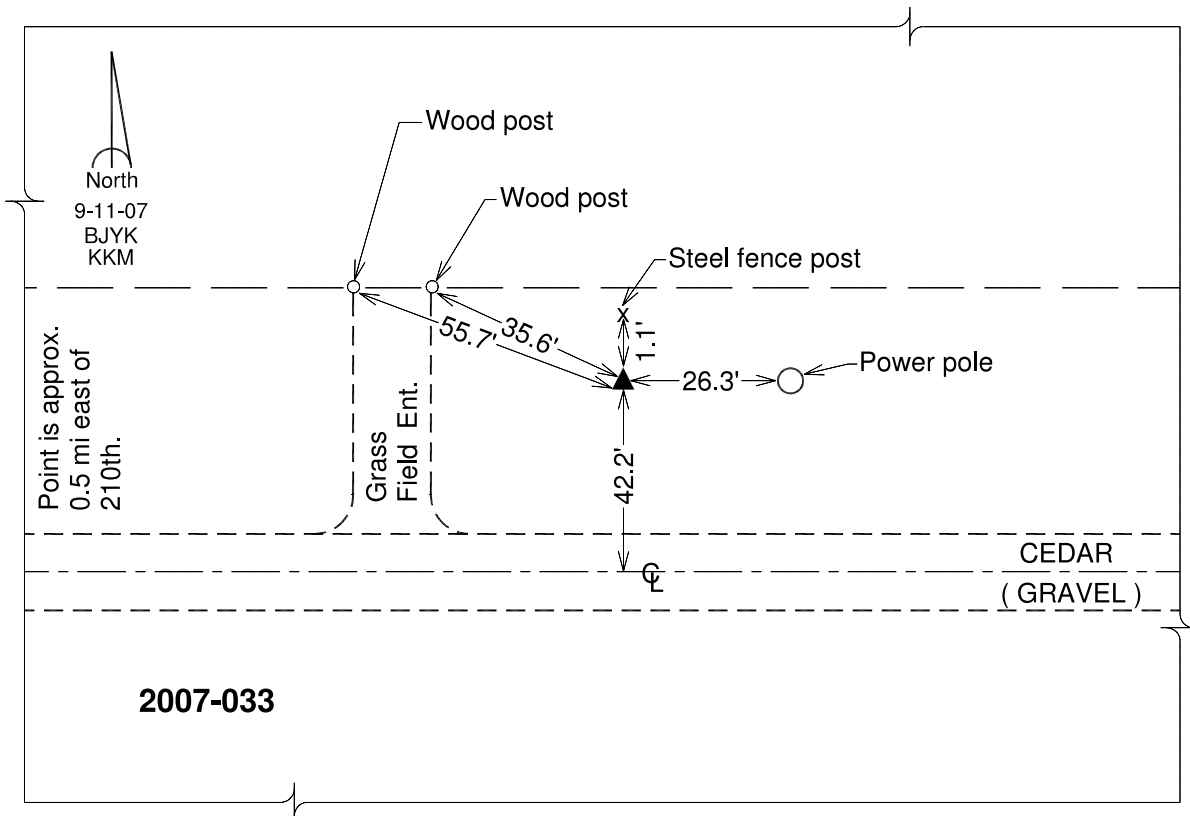
Northing: **222000.35**sft Easting: **1733488.58**sft

Orthometric Height: **1034.82**sft Ellipsoid Height: **930.77**sft **Geoid03**

Latitude: **40°36'31.83241"N** Longitude: **93°09'53.27045"W**

Mapping Angle: **0°13'15"** Combination Scale Factor: **0.99995698**

Monument Type: Berntsen 3/4" Top Security Rod Monument with a 2-1/2" dia. domed survey cap and permanent magnet encased in a white PVC pipe with a NGS style alum. access cover.



This document was prepared by DCI and GBC for use by Wayne County, Iowa.