

**Wayne County, Iowa**  
Iowa South Zone (1402)  
Horiz. Datum: NAD83(NSRS2007)  
Vert. Datum: NAVD 1988  
US Survey Feet  
**2007**

Point Name: **34**

**Designation:** 2007-034 Wayne Co GPS Control Pt

Northing: **250156.17**sft    Easting: **1736260.15**sft

Orthometric Height: **1074.89**sft    Ellipsoid Height: **970.98**sft    **Geoid03**

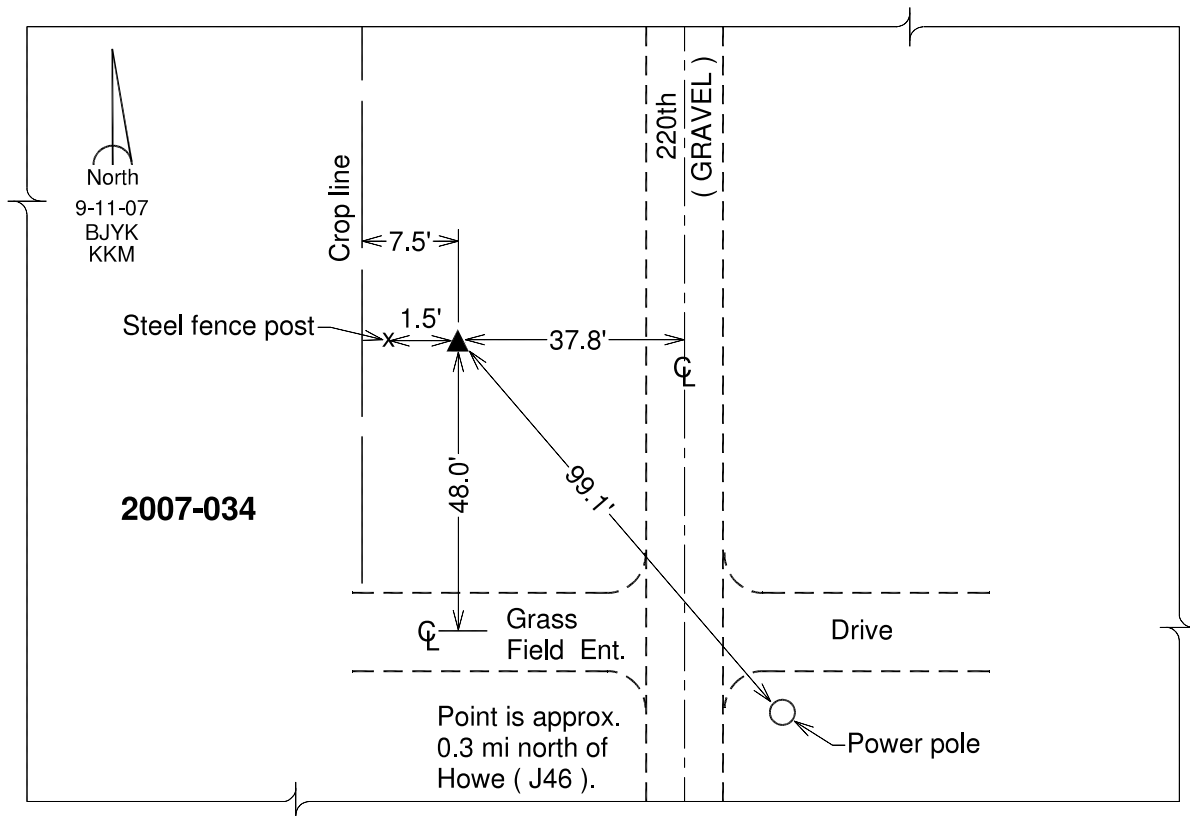
Latitude: **40°41'09.93884"N**

Longitude: **93°09'15.88542"W**

Mapping Angle: **0°13'39"**

Combination Scale Factor: **0.99994214**

**Monument Type:** Berntsen 3/4" Top Security Rod Monument with a 2-1/2" dia. domed survey cap and permanent magnet encased in a white PVC pipe with a NGS style alum. access cover.



*This document was prepared by DCI and GBC for use by Wayne County, Iowa.*