

Wayne County, Iowa
Iowa South Zone (1402)
Horiz. Datum: NAD83(NSRS2007)
Vert. Datum: NAVD 1988
US Survey Feet
2007

Point Name: **35**

Designation: 2007-035 Wayne Co GPS Control Pt

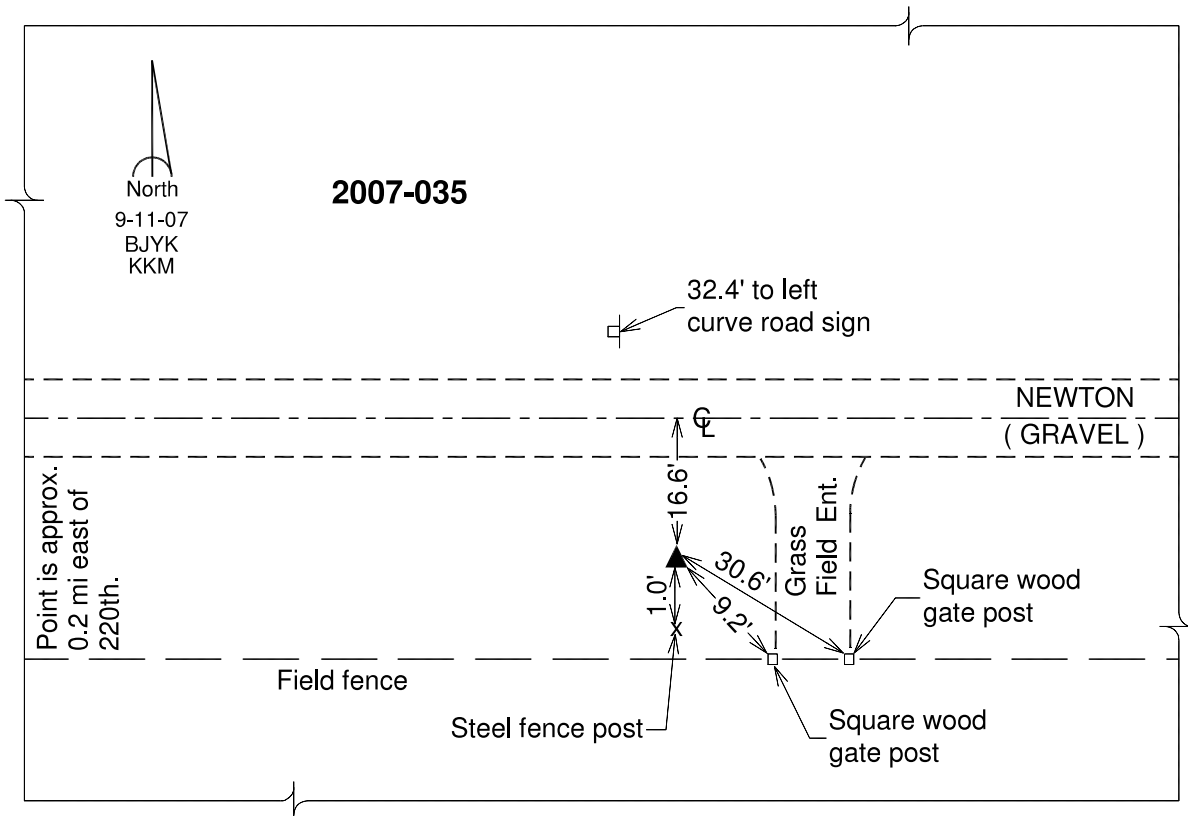
Northing: **280059.52**sft Easting: **1737180.40**sft

Orthometric Height: **1030.86**sft Ellipsoid Height: **926.93**sft **Geoid03**

Latitude: **40°46'05.38319"N** Longitude: **93°09'02.38114"W**

Mapping Angle: **0°13'48"** Combination Scale Factor: **0.99993249**

Monument Type: Berntsen 3/4" Top Security Rod Monument with a 2-1/2" dia. domed survey cap and permanent magnet encased in a white PVC pipe with a NGS style alum. access cover.



This document was prepared by DCI and GBC for use by Wayne County, Iowa.