

**Wayne County, Iowa**  
Iowa South Zone (1402)  
Horiz. Datum: NAD83(NSRS2007)  
Vert. Datum: NAVD 1988  
US Survey Feet  
**2007**

Point Name: **36**

**Designation:** 2007-036 Wayne Co GPS Control Pt

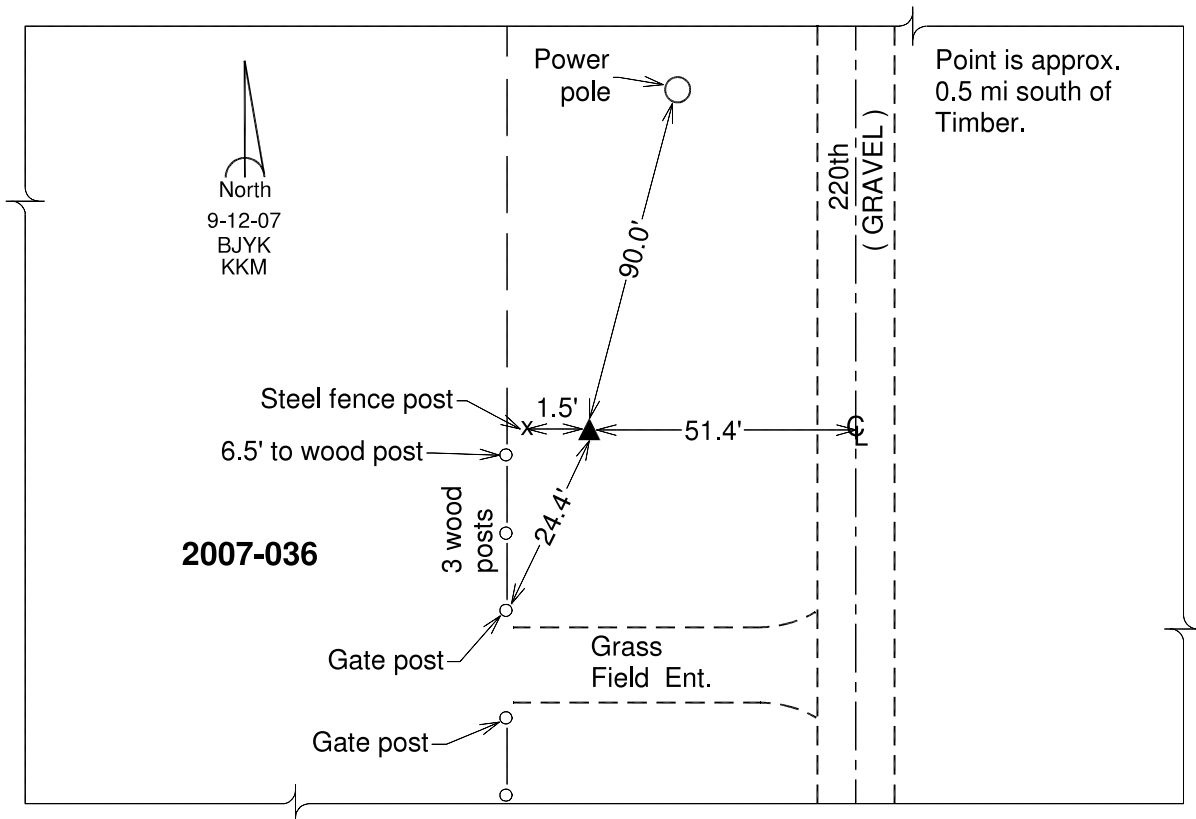
Northing: **312138.33**sft    Easting: **1735903.48**sft

Orthometric Height: **1004.75**sft    Ellipsoid Height: **900.95**sft    **Geoid03**

Latitude: **40°51'22.40919"N**                      Longitude: **93°09'17.32228"W**

Mapping Angle: **0°13'39"**                      Combination Scale Factor: **0.99992337**

**Monument Type:** Berntsen 3/4" Top Security Rod Monument with a 2-1/2" dia. domed survey cap and permanent magnet encased in a white PVC pipe with a NGS style alum. access cover.



*This document was prepared by DCI and GBC for use by Wayne County, Iowa.*