

**Wayne County, Iowa**  
 Iowa South Zone (1402)  
 Horiz. Datum: NAD83(NSRS2007)  
 Vert. Datum: NAVD 1988  
 US Survey Feet  
**2007**

Point Name: **38**

**Designation:** 8065 Appanoose Co (set by Deni Associates, Inc. in 1998)

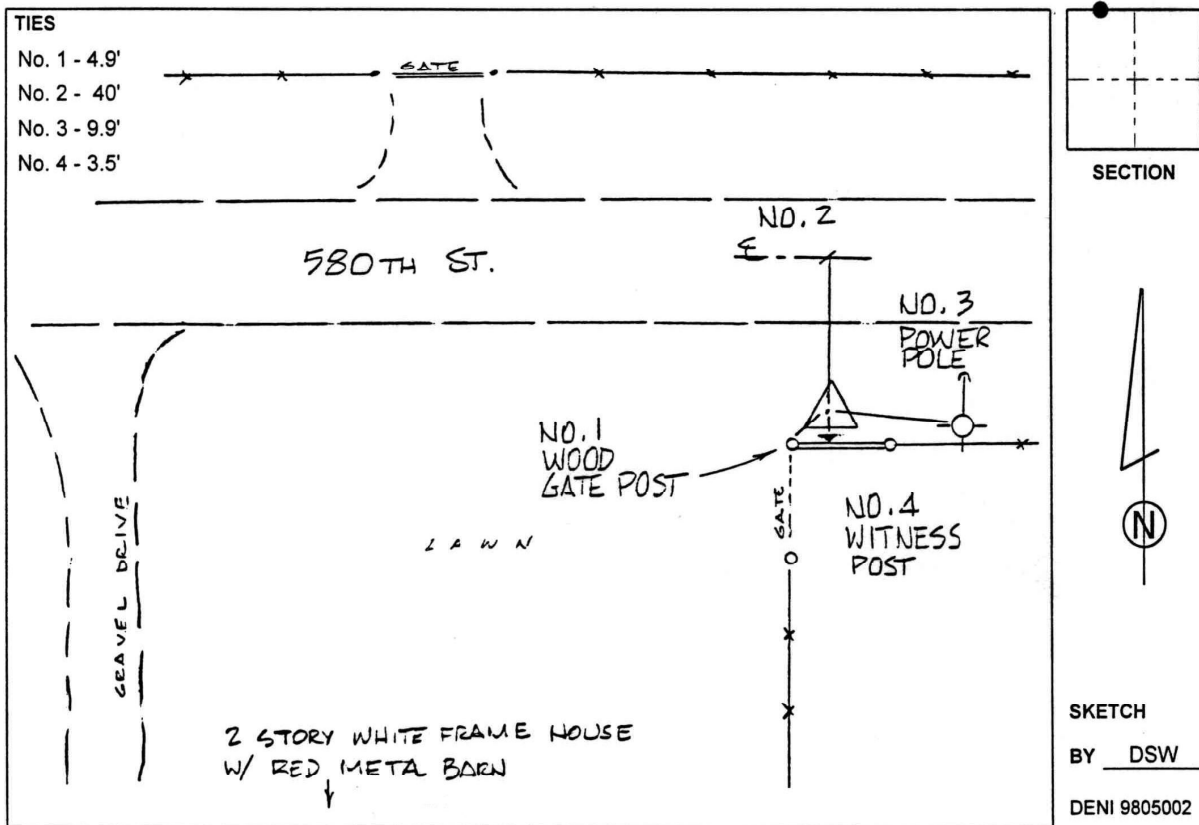
Northing: **232643.89**sft    Easting: **1753560.31**sft

Orthometric Height: **1056.92**sft    Ellipsoid Height: **952.57**sft    **Geoid03**

Latitude: **40°38'16.15639"N**    Longitude: **93°05'32.38581"W**

Mapping Angle: **0°16'07"**    Combination Scale Factor: **0.99995088**

**Monument Type:** The station mark is a 3-1/4" aluminum disk set in a 10" diameter poured-in-place concrete monument.



*This document was prepared by DCI and GBC for use by Wayne County, Iowa.*