

Wayne County, Iowa
Iowa South Zone (1402)
Horiz. Datum: NAD83(NSRS2007)
Vert. Datum: NAVD 1988
US Survey Feet
2007

Point Name: **39**

Designation: 2007-039 Wayne Co GPS Control Pt

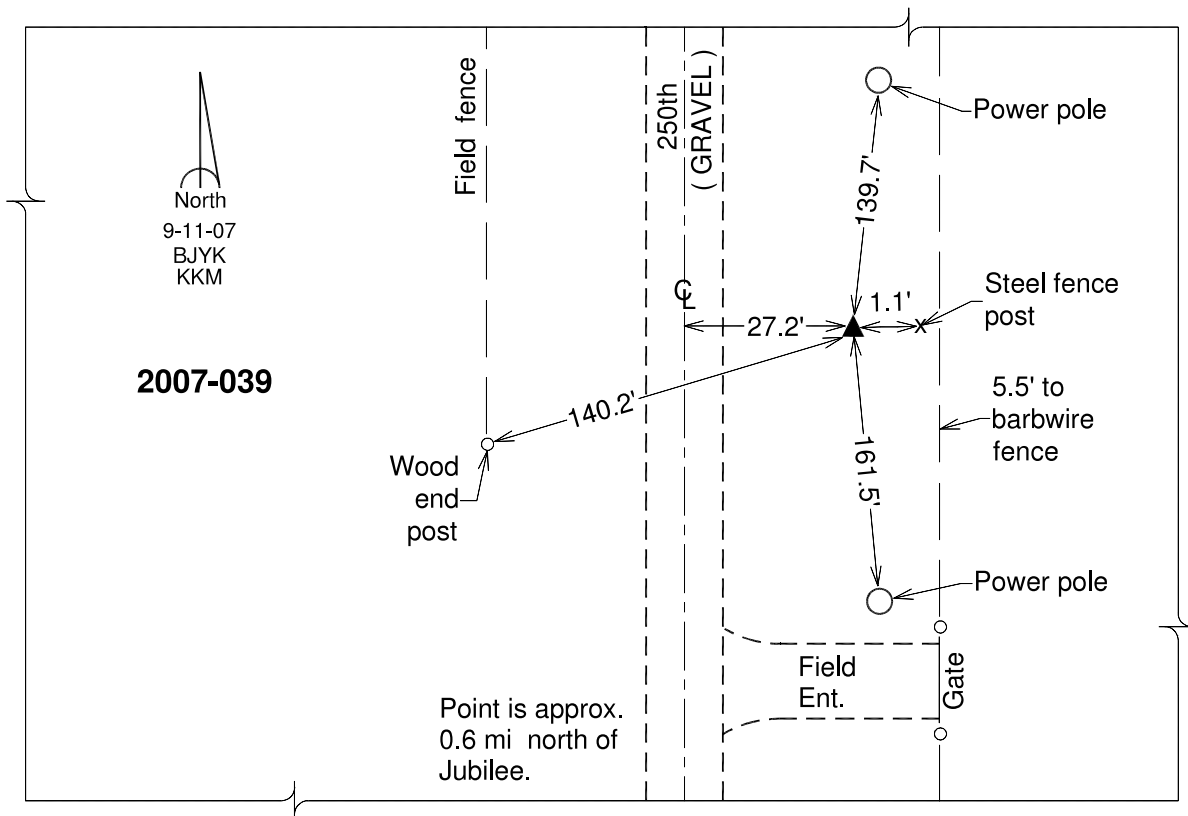
Northing: **264979.71**sft Easting: **1749397.57**sft

Orthometric Height: **1038.36**sft Ellipsoid Height: **934.19**sft **Geoid03**

Latitude: **40°43'35.86171"N** Longitude: **93°06'24.48506"W**

Mapping Angle: **0°15'32"** Combination Scale Factor: **0.99993783**

Monument Type: Berntsen 3/4" Top Security Rod Monument with a 2-1/2" dia. domed survey cap and permanent magnet encased in a white PVC pipe with a NGS style alum. access cover.



This document was prepared by DCI and GBC for use by Wayne County, Iowa.