

**Wayne County, Iowa**  
Iowa South Zone (1402)  
Horiz. Datum: NAD83(NSRS2007)  
Vert. Datum: NAVD 1988  
US Survey Feet  
**2007**

Point Name: **4**

**Designation:** 2007-004 Wayne Co GPS Control Pt

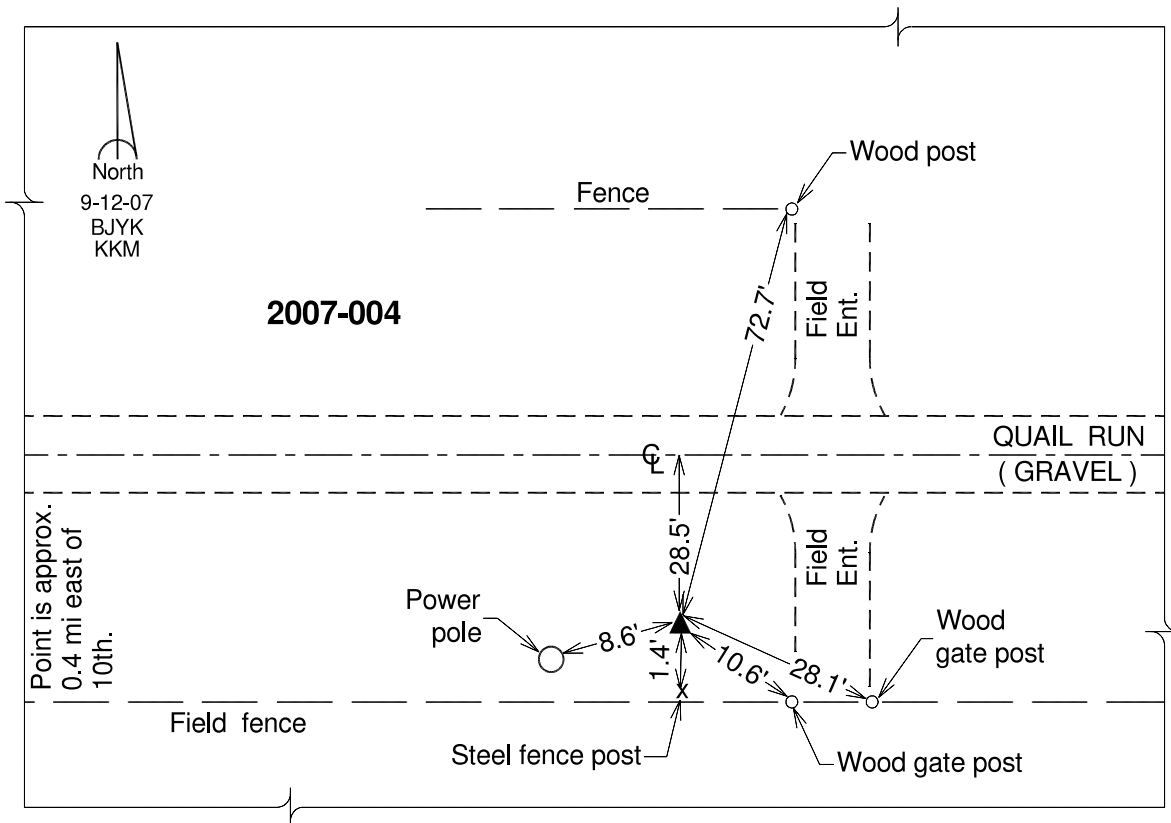
Northing: **295917.21**sft    Easting: **1626738.33**sft

Orthometric Height: **1103.43**sft    Ellipsoid Height: **1000.23**sft                      **Geoid03**

Latitude: **40°48'43.95852"N**                      Longitude: **93°32'57.89266"W**

Mapping Angle: **-0°01'57"**                      Combination Scale Factor: **0.99992352**

**Monument Type:** Berntsen 3/4" Top Security Rod Monument with a 2-1/2" dia. domed survey cap and permanent magnet encased in a white PVC pipe with a NGS style alum. access cover.



*This document was prepared by DCI and GBC for use by Wayne County, Iowa.*