

**Wayne County, Iowa**  
Iowa South Zone (1402)  
Horiz. Datum: NAD83(NSRS2007)  
Vert. Datum: NAVD 1988  
US Survey Feet  
**2007**

Point Name: **40**

**Designation:** 2007-040 Wayne Co GPS Control Pt

Northing: **302067.07**sft    Easting: **1749276.63**sft

Orthometric Height: **1024.37**sft    Ellipsoid Height: **920.33**sft    **Geoid03**

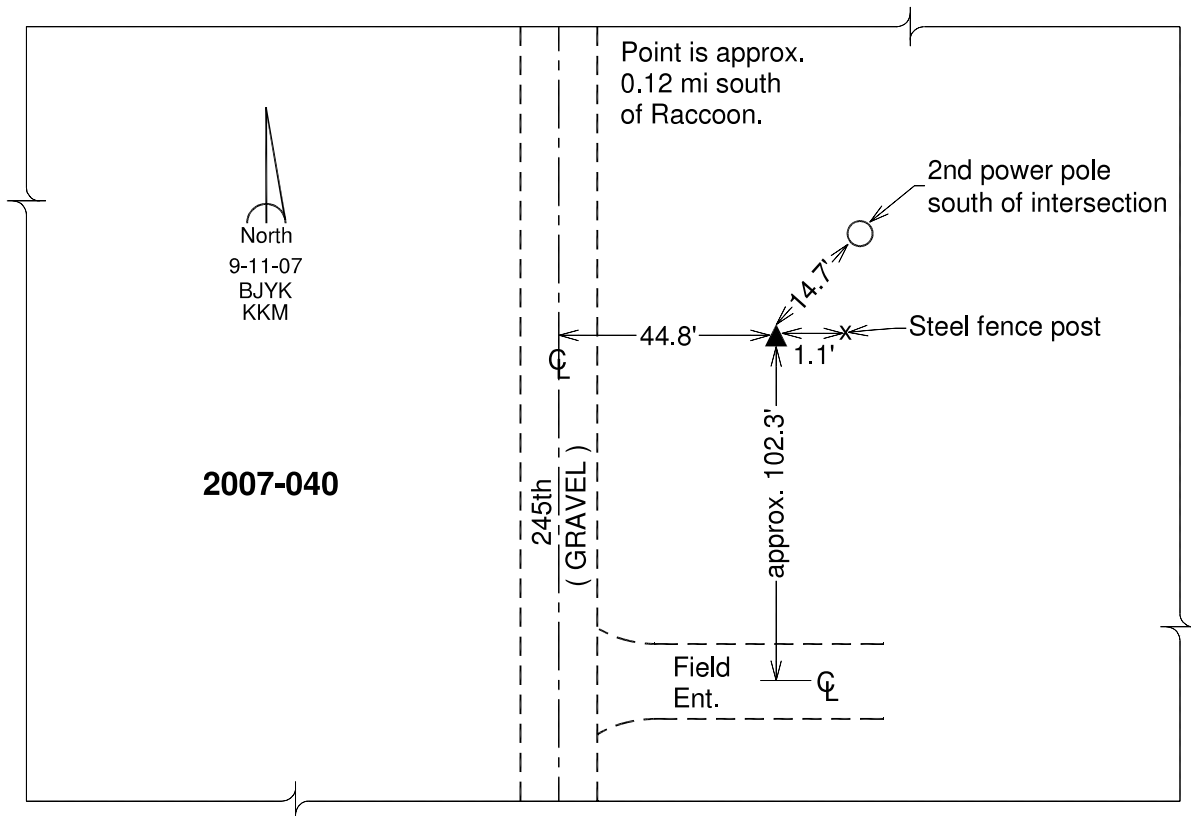
Latitude: **40°49'42.33283"N**

Longitude: **93°06'23.87743"W**

Mapping Angle: **0°15'33"**

Combination Scale Factor: **0.99992546**

**Monument Type:** Berntsen 3/4" Top Security Rod Monument with a 2-1/2" dia. domed survey cap and permanent magnet encased in a white PVC pipe with a NGS style alum. access cover.



*This document was prepared by DCI and GBC for use by Wayne County, Iowa.*