

Wayne County, Iowa
Iowa South Zone (1402)
Horiz. Datum: NAD83(NSRS2007)
Vert. Datum: NAVD 1988
US Survey Feet
2007

Point Name: **41**

Designation: 2007-041 Wayne Co GPS Control Pt

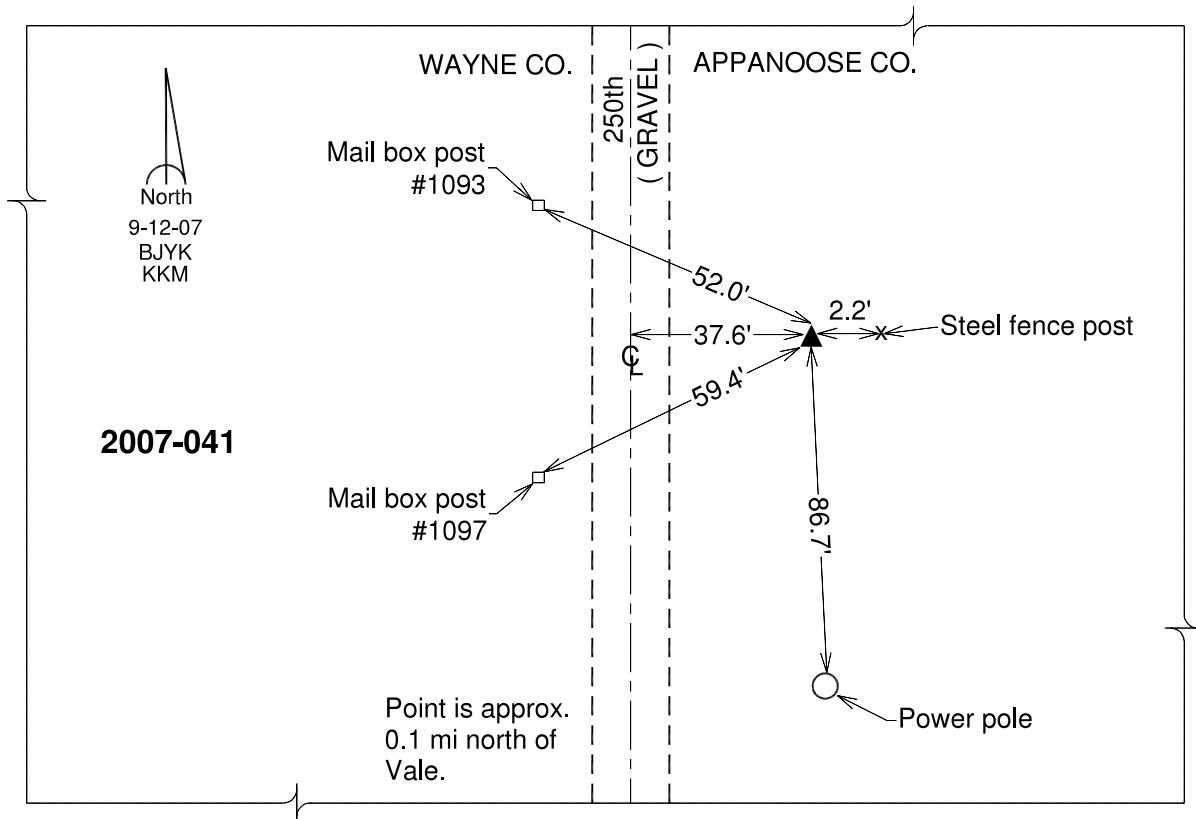
Northing: **323183.04**sft Easting: **1751689.51**sft

Orthometric Height: **951.87**sft Ellipsoid Height: **847.83**sft **Geoid03**

Latitude: **40°53'10.87278"N** Longitude: **93°05'51.21857"W**

Mapping Angle: **0°15'54"** Combination Scale Factor: **0.99992290**

Monument Type: Berntsen 3/4" Top Security Rod Monument with a 2-1/2" dia. domed survey cap and permanent magnet encased in a white PVC pipe with a NGS style alum. access cover.



This document was prepared by DCI and GBC for use by Wayne County, Iowa.