

**Wayne County, Iowa**  
 Iowa South Zone (1402)  
 Horiz. Datum: NAD83(NSRS2007)  
 Vert. Datum: NAVD 1988  
 US Survey Feet  
**2007**

Point Name: **5**

**Designation:** 2007-005 Wayne Co GPS Control Pt

Northing: **327251.90**sft    Easting: **1624822.32**sft

Orthometric Height: **1096.30**sft    Ellipsoid Height: **993.29**sft    **Geoid03**

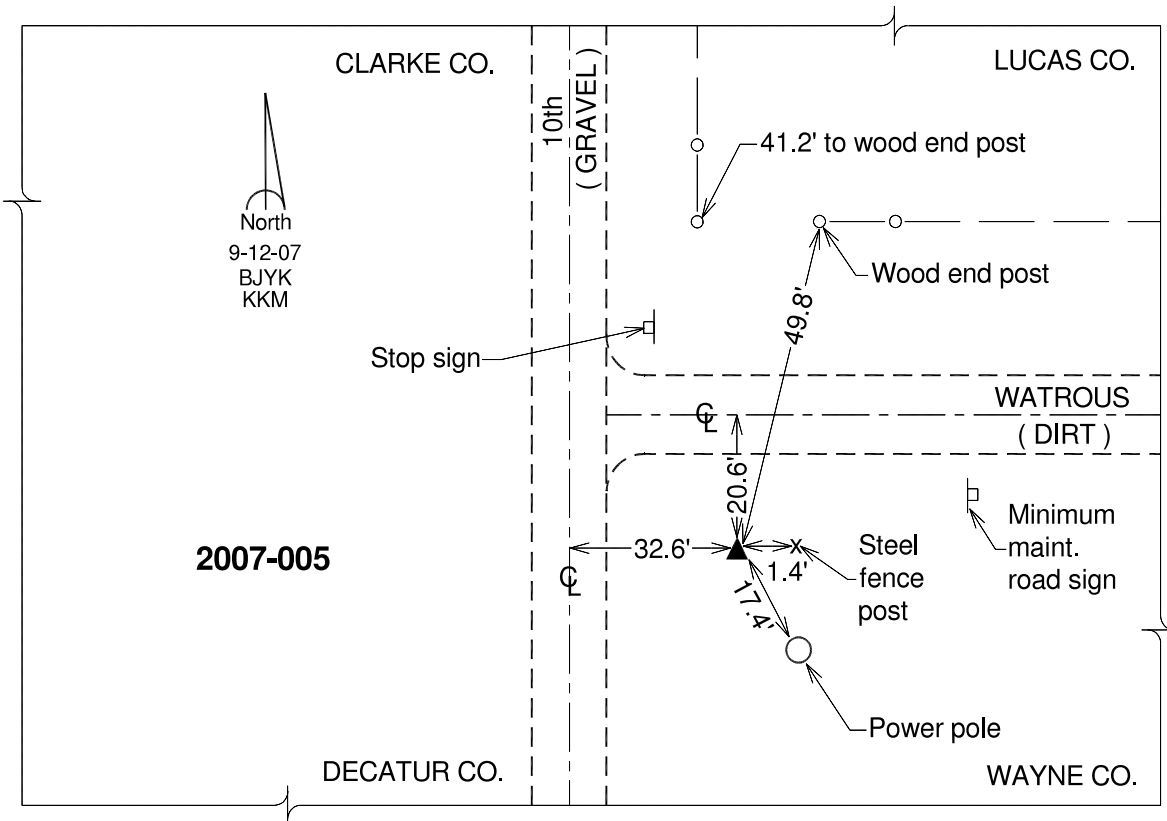
Latitude: **40°53'53.57151"N**

Longitude: **93°33'23.07549"W**

Mapping Angle: **-0°02'14"**

Combination Scale Factor: **0.99991485**

**Monument Type:** Berntsen 3/4" Top Security Rod Monument with a 2-1/2" dia. domed survey cap and permanent magnet encased in a white PVC pipe with a NGS style alum. access cover.



*This document was prepared by DCI and GBC for use by Wayne County, Iowa.*