

Wayne County, Iowa
Iowa South Zone (1402)
Horiz. Datum: NAD83(NSRS2007)
Vert. Datum: NAVD 1988
US Survey Feet
2007

Point Name: **5002**

Designation: NGS 2nd order control station "K 118" PID:LE0221

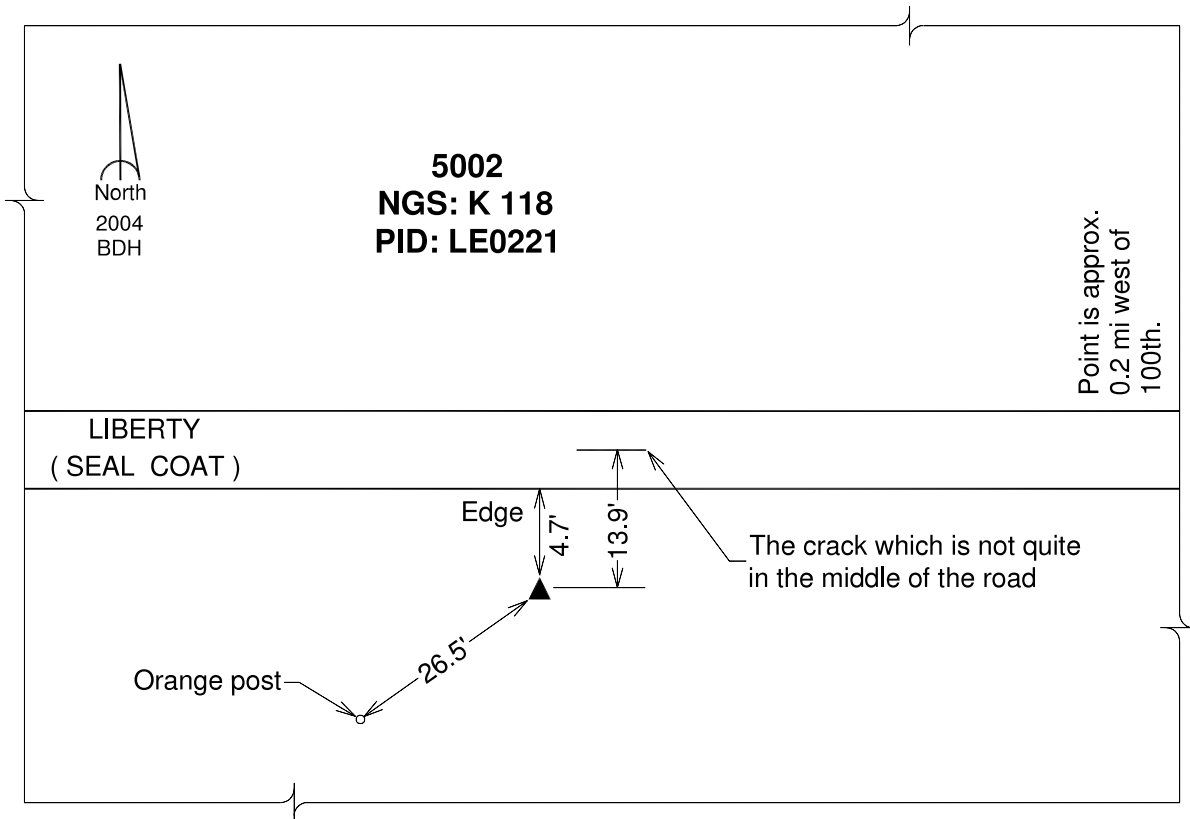
Northing: **274470.40**sft Easting: **1671258.77**sft

Orthometric Height: **1021.55**sft Ellipsoid Height: **917.94**sft **Geoid03**

Latitude: **40°45'11.88067"N** Longitude: **93°23'19.24236"W**

Mapping Angle: **0°04'24"** Combination Scale Factor: **0.99993489**

Monument Type: The station mark is a Coast & Geodetic Survey bench mark disk stamped "K 118 1935" and set in the top of the SW concrete wingwall, level with the highway.



This document was prepared by DCI and GBC for use by Wayne County, Iowa.