

**Wayne County, Iowa**  
Iowa South Zone (1402)  
Horiz. Datum: NAD83(NSRS2007)  
Vert. Datum: NAVD 1988  
US Survey Feet  
**2007**

Point Name: **5004**

**Designation:** NGS 2nd order control station "93 12" PID:LE0232

Northing: **248367.03sft** Easting: **1732660.49sft**

Orthometric Height: **1071.32sft** Ellipsoid Height: **967.52sft** **Geoid03**

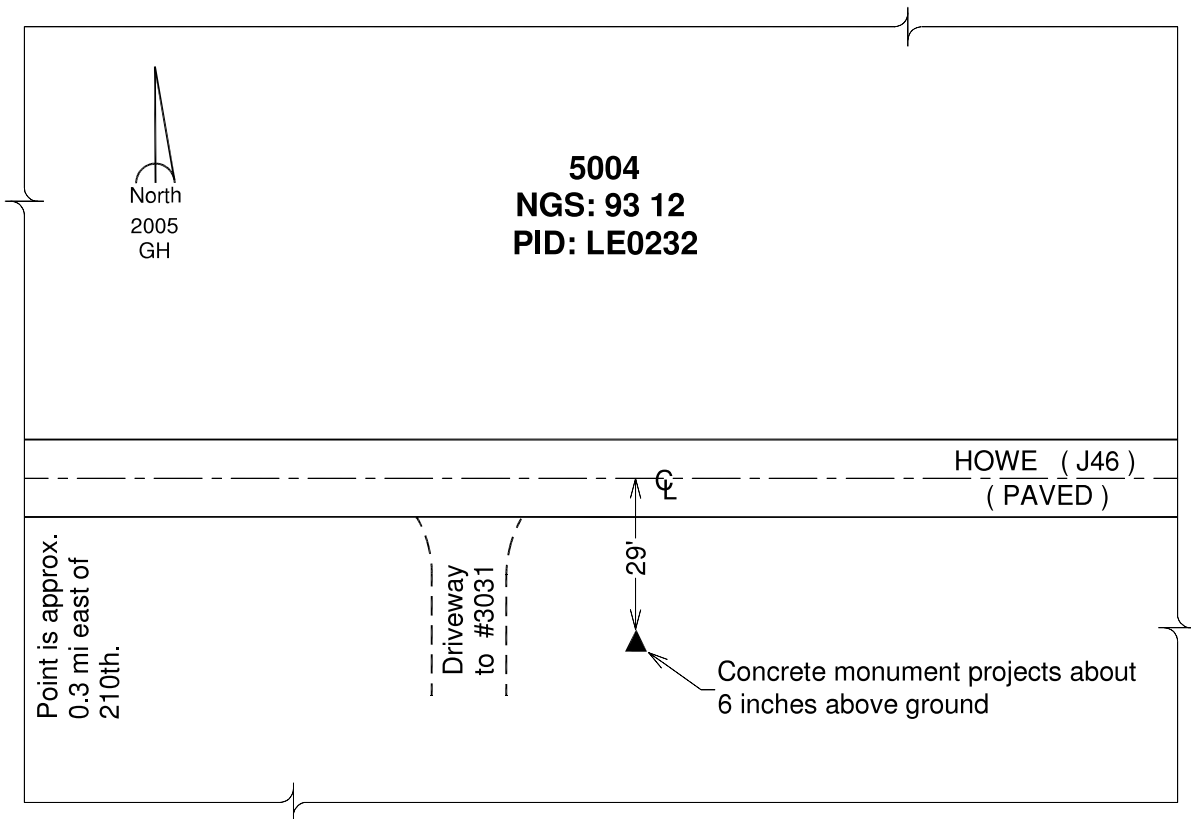
Latitude: **40°40'52.39862"N**

Longitude: **93°10'02.69981"W**

Mapping Angle: **0°13'09"**

Combination Scale Factor: **0.99994307**

**Monument Type:** The station mark is a Coast & Geodetic Survey bench mark disk stamped "93-12" and set in the top of concrete post. The post projects about 6" above the ground.



*This document was prepared by DCI and GBC for use by Wayne County, Iowa.*