

**Wayne County, Iowa**  
Iowa South Zone (1402)  
Horiz. Datum: NAD83(NSRS2007)  
Vert. Datum: NAVD 1988  
US Survey Feet  
**2007**

Point Name: **5005**

**Designation:** NGS 2nd order control station "93 15" PID:LE0236

Northing: **248474.55**sft Easting: **1746845.94**sft

Orthometric Height: **1070.90**sft Ellipsoid Height: **966.67**sft **Geoid03**

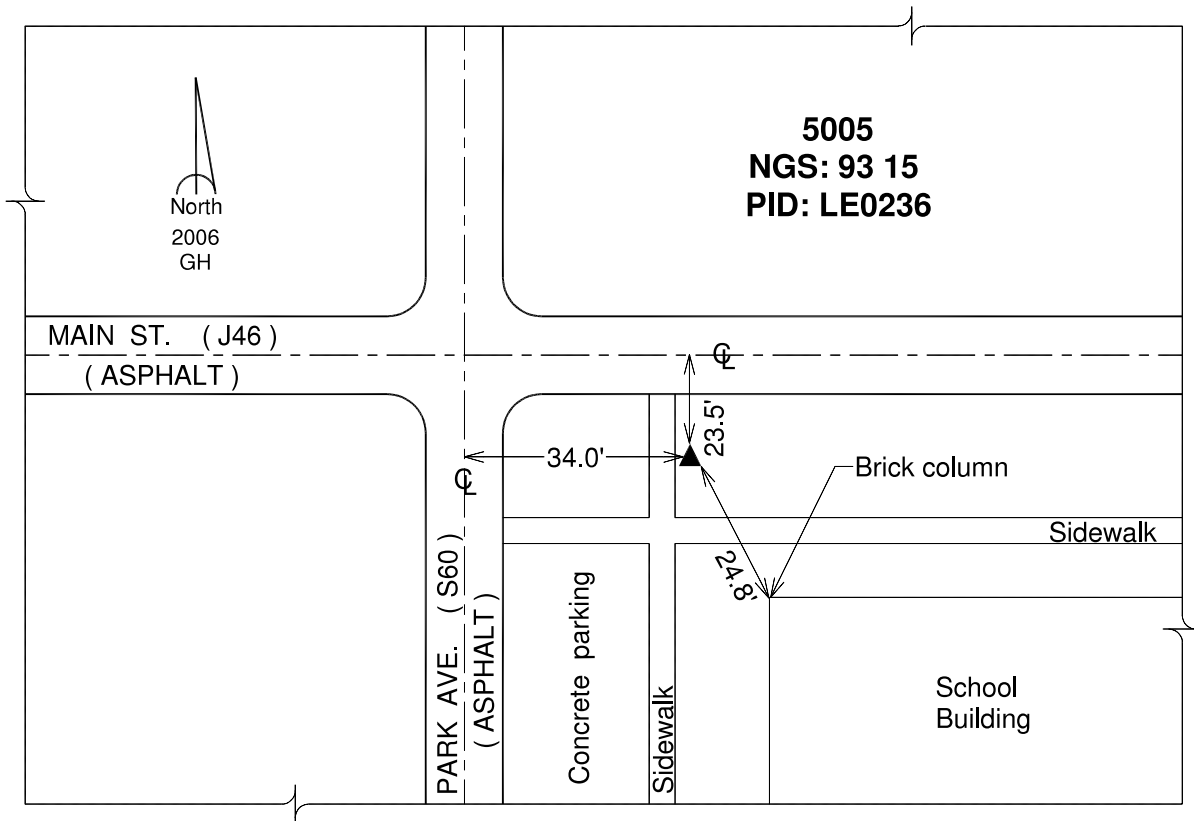
Latitude: **40°40'52.88389"N**

Longitude: **93°06'58.57263"W**

Mapping Angle: **0°15'10"**

Combination Scale Factor: **0.99994309**

**Monument Type:** The station mark is a Coast & Geodetic Survey bench mark disk stamped "93-15" and set in the top of a concrete post approx. 2" below ground surface.



*This document was prepared by DCI and GBC for use by Wayne County, Iowa.*