

Wayne County, Iowa
Iowa South Zone (1402)
Horiz. Datum: NAD83(NSRS2007)
Vert. Datum: NAVD 1988
US Survey Feet
2007

Point Name: **5025**

Designation: NGS 2nd order control station "D 115" PID:LE0400

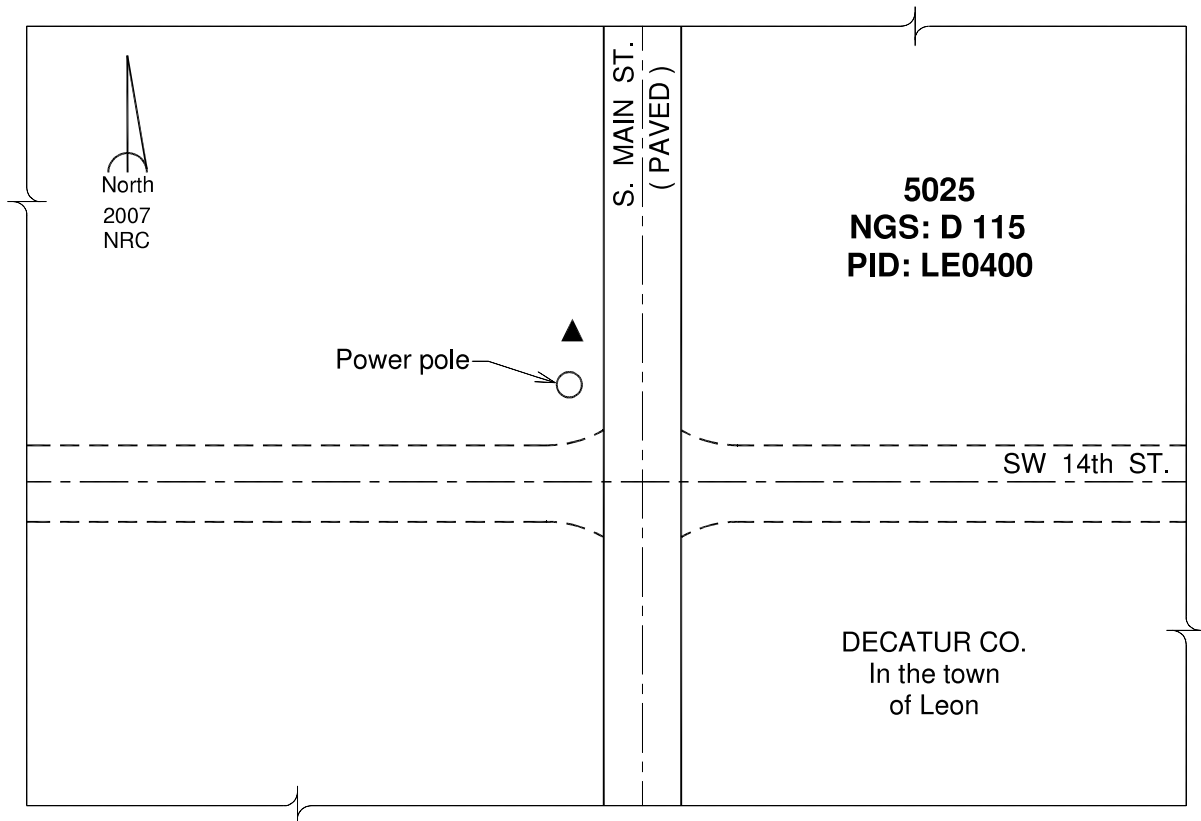
Northing: **266096.86**sft Easting: **1571849.95**sft

Orthometric Height: **1022.64**sft Ellipsoid Height: **919.45**sft **Geoid03**

Latitude: **40°43'48.37099"N** Longitude: **93°44'50.63412"W**

Mapping Angle: **-0°09'47"** Combination Scale Factor: **0.99993804**

Monument Type: The station mark is a Coast & Geodetic Survey bench mark disk stamped "D 115" and set in the top of a concrete post flush with the ground.



This document was prepared by DCI and GBC for use by Wayne County, Iowa.