

Wayne County, Iowa
Iowa South Zone (1402)
Horiz. Datum: NAD83(NSRS2007)
Vert. Datum: NAVD 1988
US Survey Feet
2007

Point Name: **6**

Designation: 2007-006 Wayne Co GPS Control Pt

Northing: **222070.64**sft Easting: **1640789.43**sft

Orthometric Height: **1098.97**sft Ellipsoid Height: **995.45**sft **Geoid03**

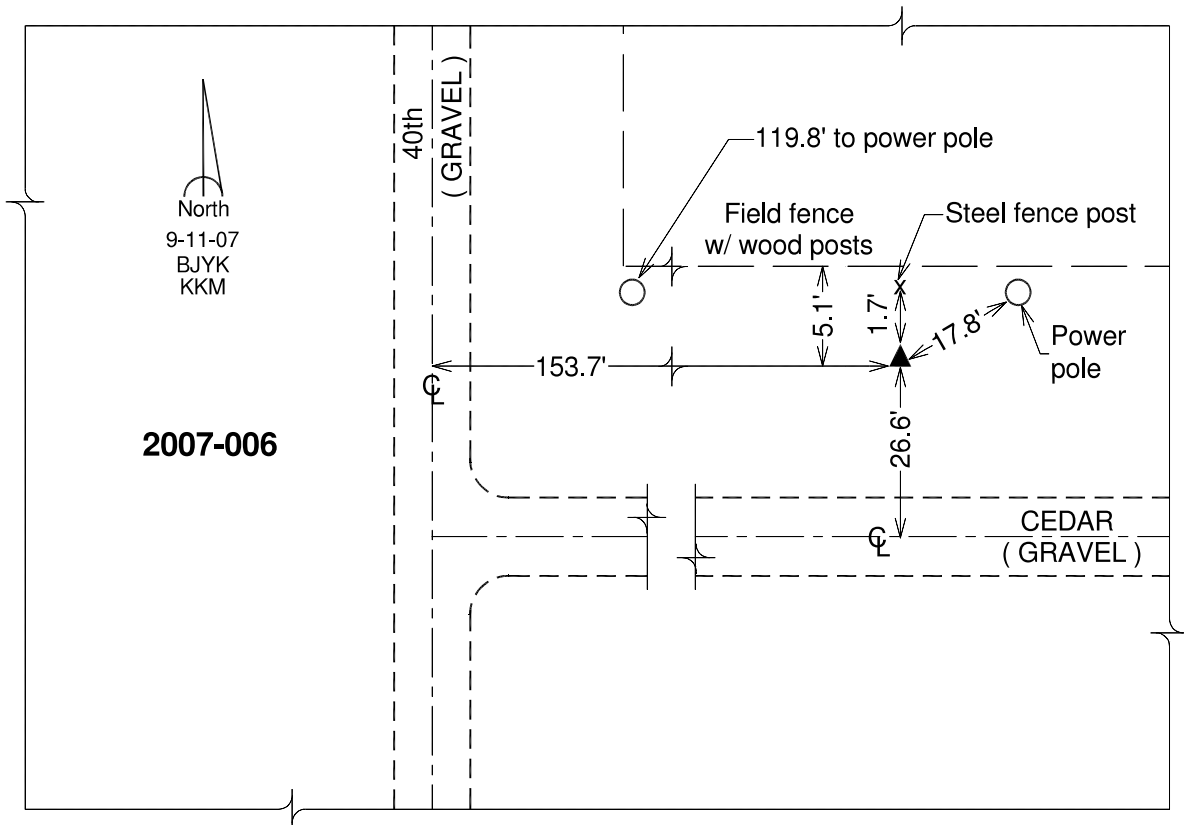
Latitude: **40°36'34.29897"N**

Longitude: **93°29'55.16686"W**

Mapping Angle: **0°00'03"**

Combination Scale Factor: **0.99995377**

Monument Type: Berntsen 3/4" Top Security Rod Monument with a 2-1/2" dia. domed survey cap and permanent magnet encased in a white PVC pipe with a NGS style alum. access cover.



This document was prepared by DCI and GBC for use by Wayne County, Iowa.