

**Wayne County, Iowa**  
Iowa South Zone (1402)  
Horiz. Datum: NAD83(NSRS2007)  
Vert. Datum: NAVD 1988  
US Survey Feet  
**2007**

Point Name: **6001**

**Designation:** CBN horizontal and 3rd order vertical control station "PT01" PID:AE2144

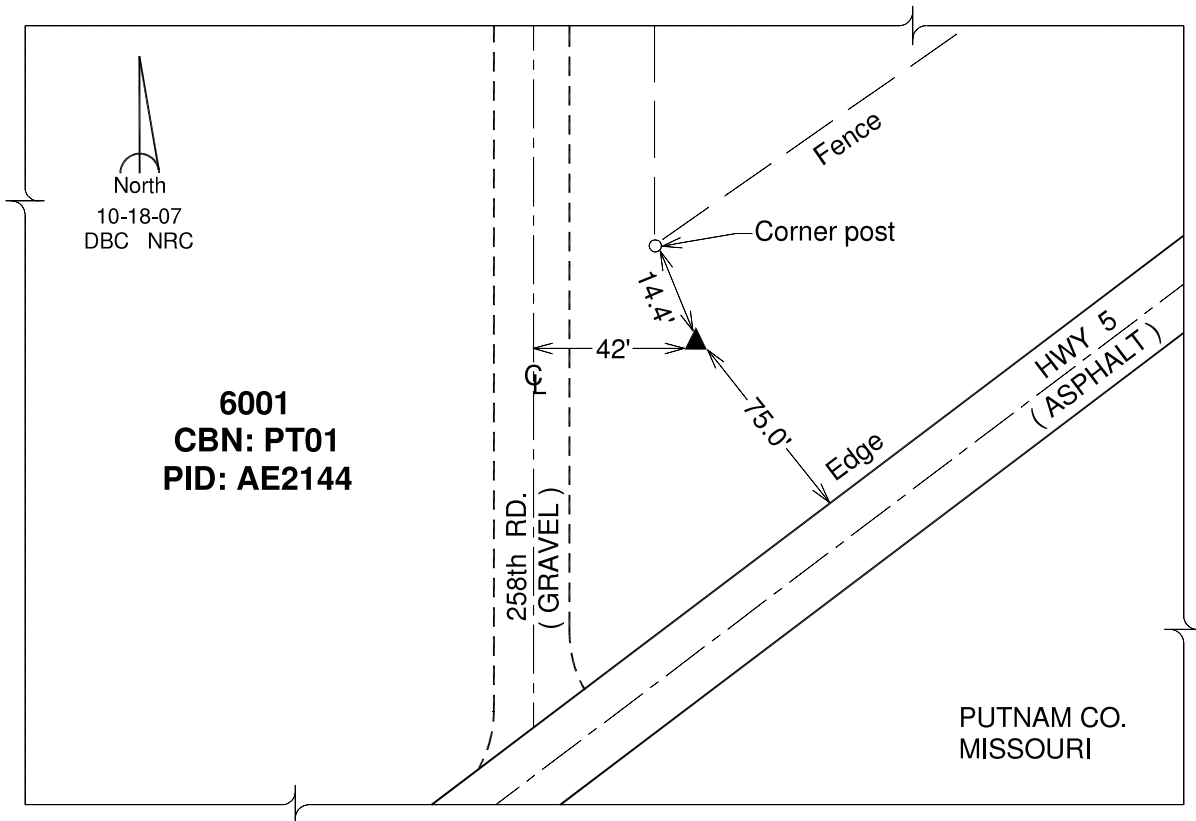
Northing: **146944.93**sft    Easting: **1761303.72**sft

Orthometric Height: **1058.00**sft    Ellipsoid Height: **953.41**sft    **Geoid03**

Latitude: **40°24'08.98230"N**                      Longitude: **93°03'57.49250"W**

Mapping Angle: **0°17'09"**                      Combination Scale Factor: **0.99999919**

**Monument Type:** The station mark is a MODNR survey disk stamped "PT-01 1997" and set in the top of a concrete monument flush with the ground surface.



*This document was prepared by DCI and GBC for use by Wayne County, Iowa.*