

Wayne County, Iowa
Iowa South Zone (1402)
Horiz. Datum: NAD83(NSRS2007)
Vert. Datum: NAVD 1988
US Survey Feet
2007

Point Name: **6003**

Designation: CBN horizontal control station "ET 2 MES" PID:LE0588

Northing: **226749.78**sft Easting: **1571658.62**sft

Orthometric Height: **1087.17**sft Ellipsoid Height: **983.76**sft **Geoid03**

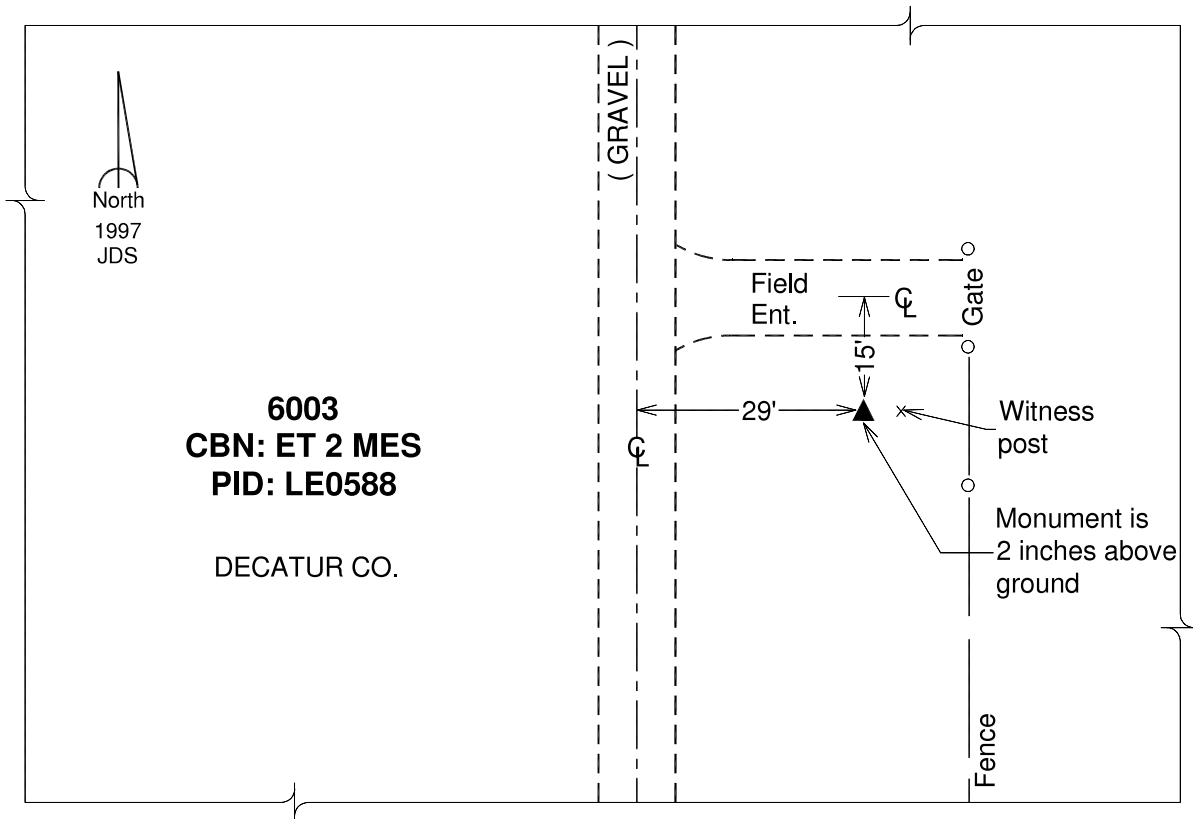
Latitude: **40°37'19.56761"N**

Longitude: **93°44'51.66400"W**

Mapping Angle: **-0°09'47"**

Combination Scale Factor: **0.99995210**

Monument Type: The station mark is a USGS survey disk stamped "ET 2 MES 1963" and set in the top of concrete post projecting 2" from the ground.



This document was prepared by DCI and GBC for use by Wayne County, Iowa.