

Wayne County, Iowa
Iowa South Zone (1402)
Horiz. Datum: NAD83(NSRS2007)
Vert. Datum: NAVD 1988
US Survey Feet
2007

Point Name: **6005**

Designation: CBN horizontal control station "OSCEOLA" PID:LE0593

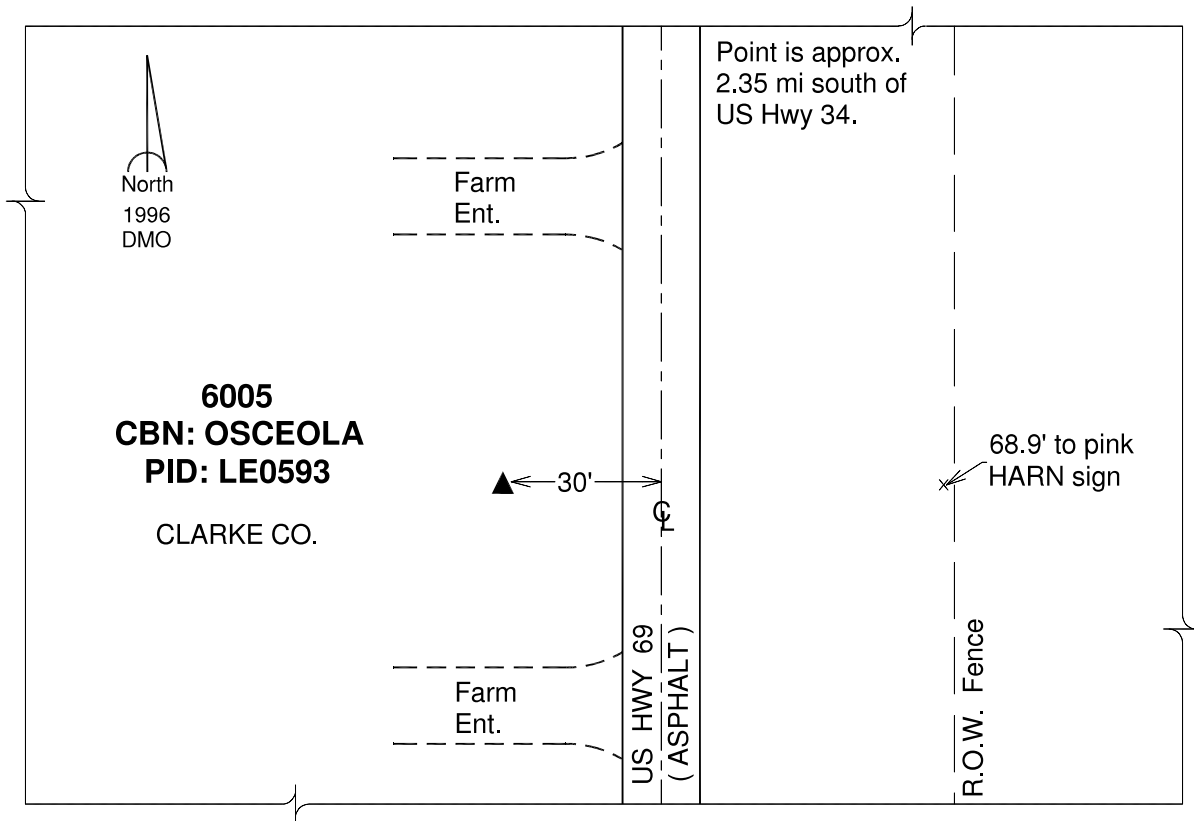
Northing: **364294.75**sft Easting: **1565987.83**sft

Orthometric Height: **1150.01**sft Ellipsoid Height: **1047.62**sft **Geoid03**

Latitude: **40°59'58.50669"N** Longitude: **93°46'10.73270"W**

Mapping Angle: **-0°10'39"** Combination Scale Factor: **0.99990452**

Monument Type: The station mark is a Coast & Geodetic Survey triangulation disk stamped "OSCEOLA 1958" and set in the top of concrete post located 68.9ft W of a pink barn sign.



This document was prepared by DCI and GBC for use by Wayne County, Iowa.