

**Wayne County, Iowa**  
 Iowa South Zone (1402)  
 Horiz. Datum: NAD83(NSRS2007)  
 Vert. Datum: NAVD 1988  
 US Survey Feet  
**2007**

Point Name: **6010**

**Designation:** 6010 Monroe Co (set by Deni Associates, Inc. in 1996)

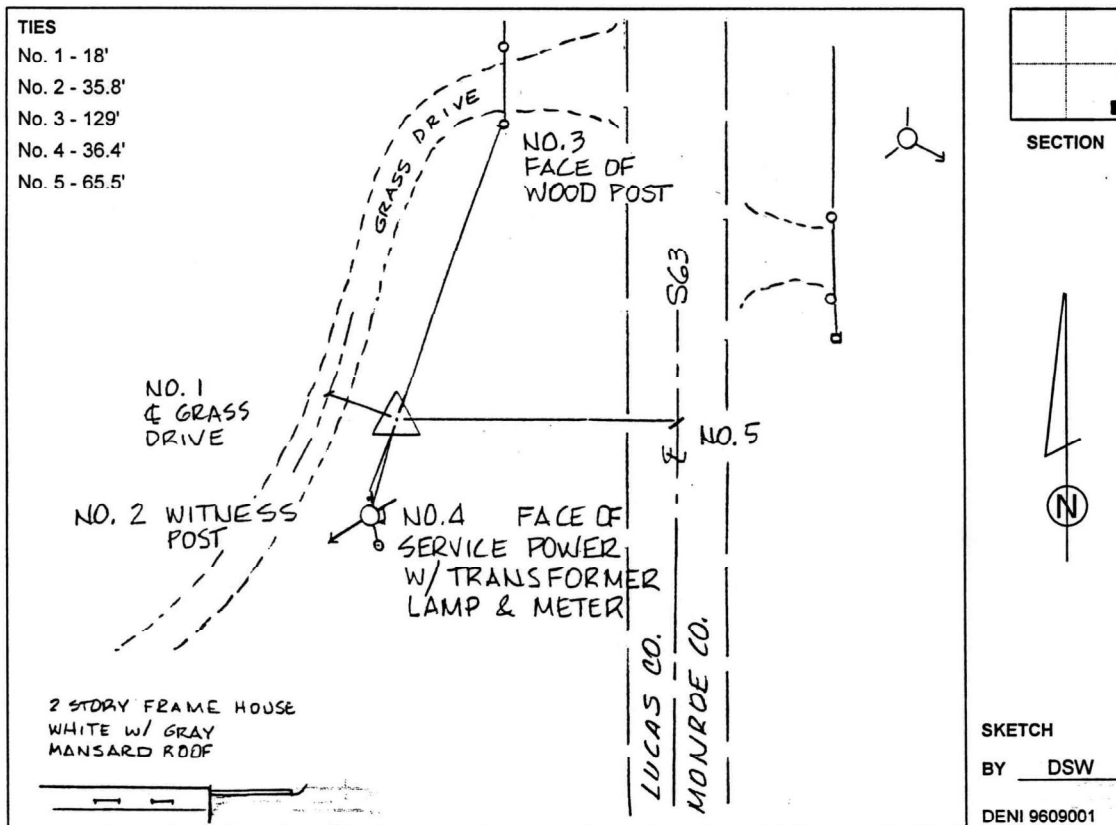
Northing: **328124.05sft**    Easting: **1751548.84sft**

Orthometric Height: **982.69sft**    Ellipsoid Height: **878.65sft**    **Geoid03**

Latitude: **40°53'59.70166"N**    Longitude: **93°05'52.75284"W**

Mapping Angle: **0°15'53"**    Combination Scale Factor: **0.99992017**

**Monument Type:** The station mark is a 3-1/4" aluminum disk set in a 12" diameter poured-in-place concrete monument.



*This document was prepared by DCI and GBC for use by Wayne County, Iowa.*