

Wayne County, Iowa
Iowa South Zone (1402)
Horiz. Datum: NAD83(NSRS2007)
Vert. Datum: NAVD 1988
US Survey Feet
2007

Point Name: **61**

Designation: NE Corner of Sec 32 T70N R23W, Richman Township

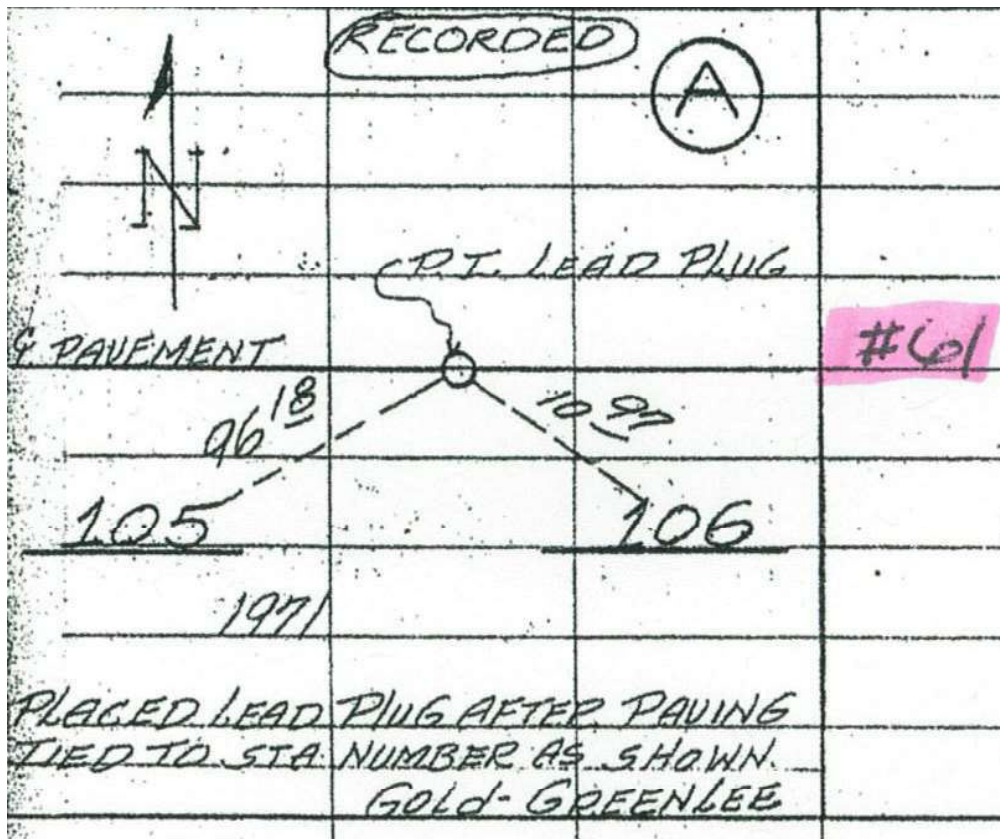
Northing: **301153.39**sft Easting: **1635262.35**sft

Orthometric Height: **1110.77**sft Ellipsoid Height: **1007.57**sft **Geoid03**

Latitude: **40°49'35.73132"N** Longitude: **93°31'07.04874"W**

Mapping Angle: **-0°00'44"** Combination Scale Factor: **0.99992151**

Monument Type: Lead plug set in concrete pavement. (at P.I. on centerline)



This document was prepared by DCI and GBC for use by Wayne County, Iowa.