

Wayne County, Iowa
Iowa South Zone (1402)
Horiz. Datum: NAD83(NSRS2007)
Vert. Datum: NAVD 1988
US Survey Feet
2007

Point Name: **64**

Designation: NE Corner of Sec 11 T67N R20W, Monroe Township

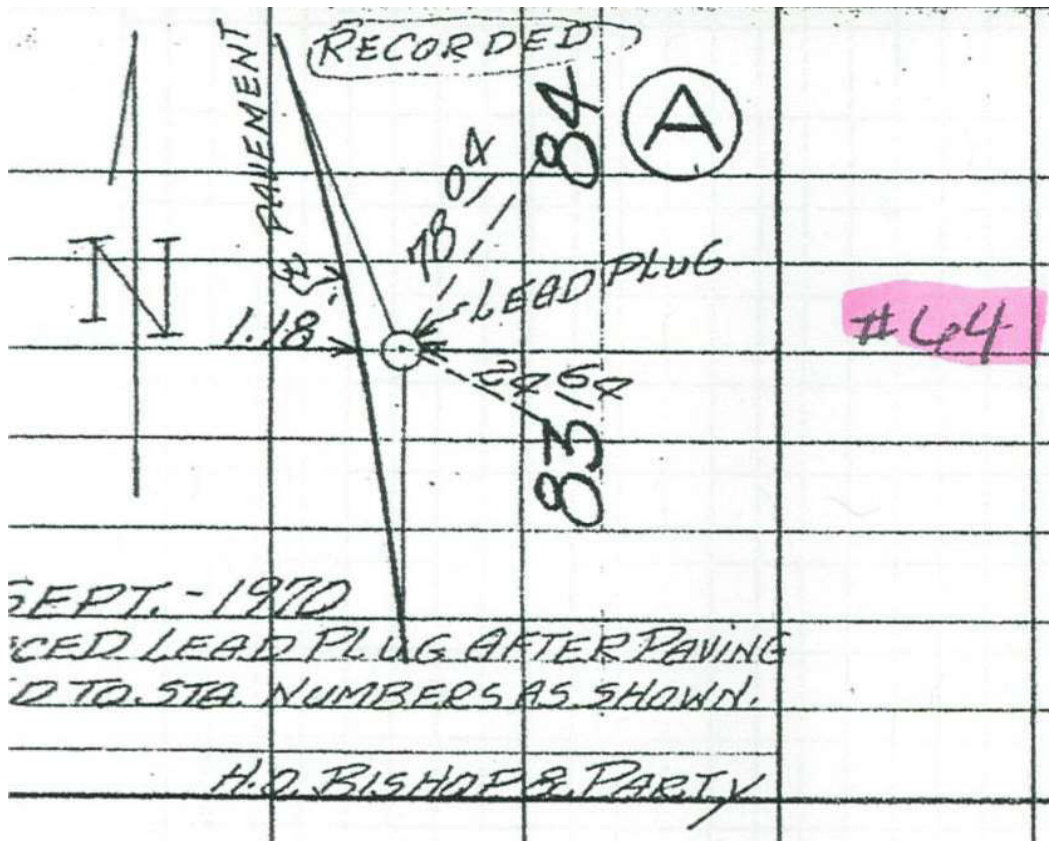
Northing: **227348.85**sft Easting: **1746923.99**sft

Orthometric Height: **1085.42**sft Ellipsoid Height: **981.19**sft **Geoid03**

Latitude: **40°37'24.13350"N** Longitude: **93°06'58.76902"W**

Mapping Angle: **0°15'10"** Combination Scale Factor: **0.99995200**

Monument Type: Lead plug set in concrete pavement.



This document was prepared by DCI and GBC for use by Wayne County, Iowa.