

Wayne County, Iowa
Iowa South Zone (1402)
Horiz. Datum: NAD83(NSRS2007)
Vert. Datum: NAVD 1988
US Survey Feet
2007

Point Name: **65**

Designation: NE Corner of Sec 3 T69N R20W, South Fork Township

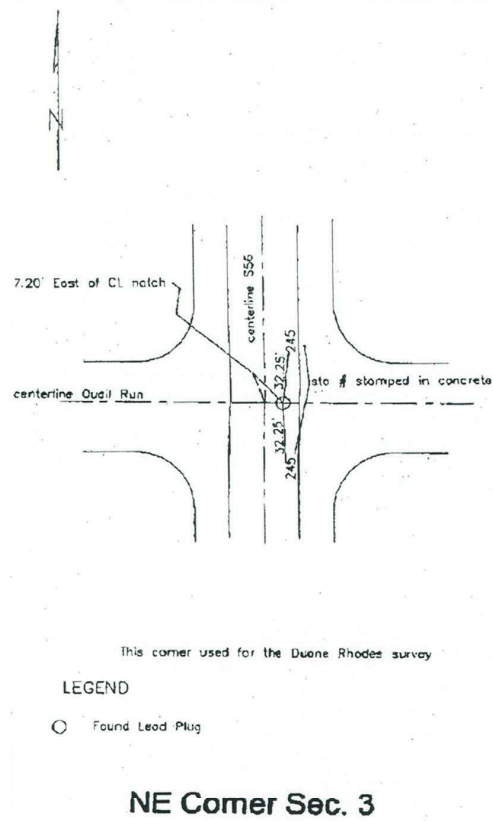
Northing: **296058.99**sft Easting: **1741307.76**sft

Orthometric Height: **1029.43**sft Ellipsoid Height: **925.49**sft **Geoid03**

Latitude: **40°48'43.30914"N** Longitude: **93°08'07.86791"W**

Mapping Angle: **0°14'24"** Combination Scale Factor: **0.99992710**

Monument Type: Lead plug set in concrete pavement.



This document was prepared by DCI and GBC for use by Wayne County, Iowa.