

Wayne County, Iowa
Iowa South Zone (1402)
Horiz. Datum: NAD83(NSRS2007)
Vert. Datum: NAVD 1988
US Survey Feet
2007

Point Name: **66**

Designation: NE Corner of Sec 5 T70N R20W, Wright Township

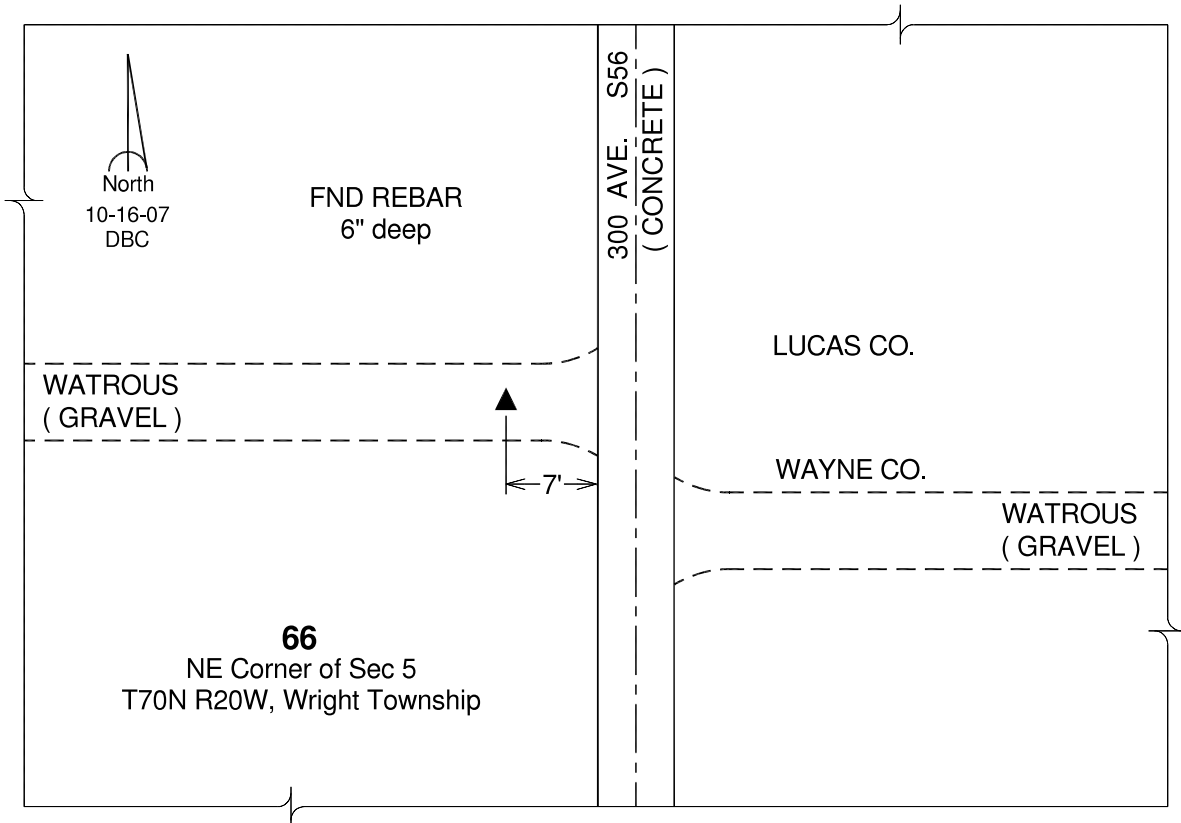
Northing: **327422.40**sft Easting: **1730422.62**sft

Orthometric Height: **997.96**sft Ellipsoid Height: **894.29**sft **Geoid03**

Latitude: **40°53'53.64170"N** Longitude: **93°10'27.90568"W**

Mapping Angle: **0°12'52"** Combination Scale Factor: **0.99991957**

Monument Type: Fnd rebar 6" deep in gravel road, 7ft W of W edge of N-S concrete pavement.



This document was prepared by DCI and GBC for use by Wayne County, Iowa.