

Wayne County, Iowa
 Iowa South Zone (1402)
 Horiz. Datum: NAD83(NSRS2007)
 Vert. Datum: NAVD 1988
 US Survey Feet
2007

Point Name: **7**

Designation: 2007-007 Wayne Co GPS Control Pt

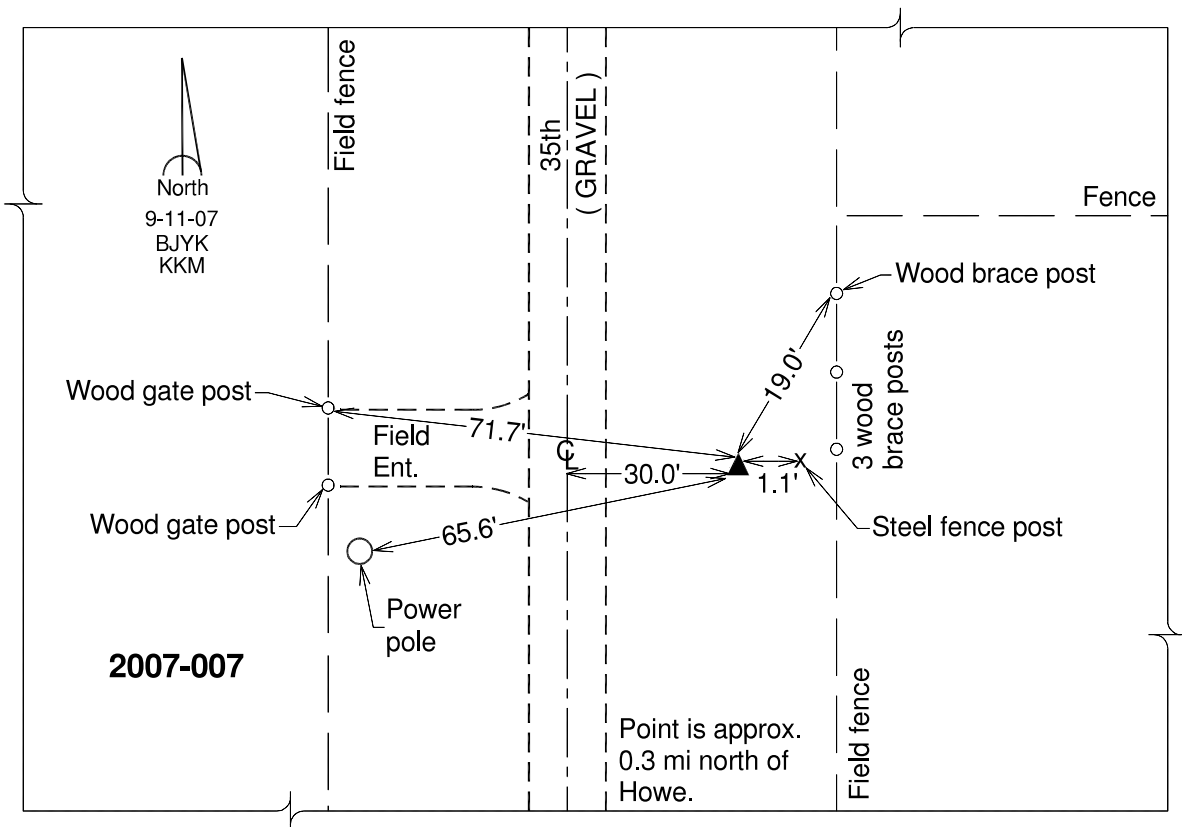
Northing: **250109.07**sft Easting: **1638277.73**sft

Orthometric Height: **1071.53**sft Ellipsoid Height: **968.05**sft **Geoid03**

Latitude: **40°41'11.35382"N** Longitude: **93°30'27.76500"W**

Mapping Angle: **-0°00'18"** Combination Scale Factor: **0.99994222**

Monument Type: Berntsen 3/4" Top Security Rod Monument with a 2-1/2" dia. domed survey cap and permanent magnet encased in a white PVC pipe with a NGS style alum. access cover.



This document was prepared by DCI and GBC for use by Wayne County, Iowa.