

Wayne County, Iowa
Iowa South Zone (1402)
Horiz. Datum: NAD83(NSRS2007)
Vert. Datum: NAVD 1988
US Survey Feet
2007

Point Name: **9**

Designation: 2007-009 Wayne Co GPS Control Pt

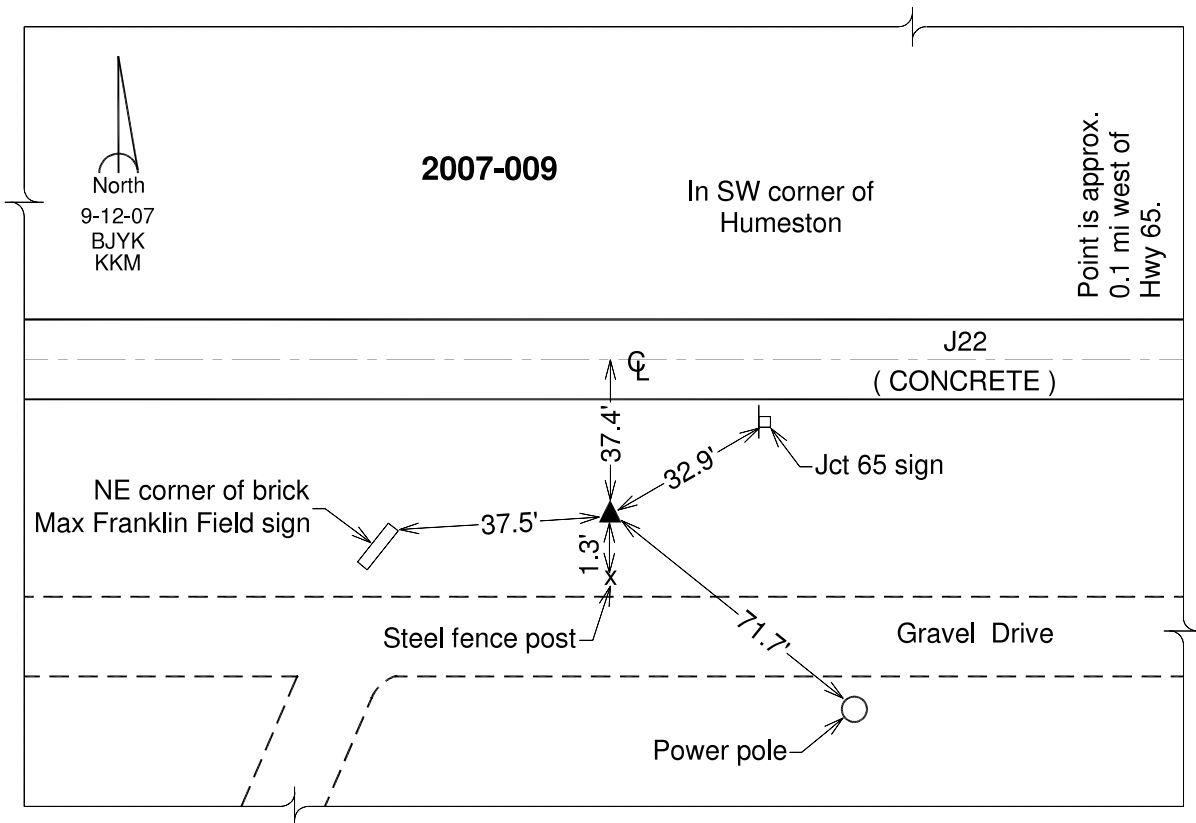
Northing: **311668.25**sft Easting: **1639916.08**sft

Orthometric Height: **1106.33**sft Ellipsoid Height: **1003.17**sft **Geoid03**

Latitude: **40°51'19.63638"N** Longitude: **93°30'06.51467"W**

Mapping Angle: **-0°00'04"** Combination Scale Factor: **0.99991857**

Monument Type: Berntsen 3/4" Top Security Rod Monument with a 2-1/2" dia. domed survey cap and permanent magnet encased in a white PVC pipe with a NGS style alum. access cover.



This document was prepared by DCI and GBC for use by Wayne County, Iowa.