

**Wayne County, Iowa**  
Iowa South Zone (1402)  
Horiz. Datum: NAD83(NSRS2007)  
Vert. Datum: NAVD 1988  
US Survey Feet  
**2007**

Point Name: **9671**

**Designation:** NGS 2nd order control station "F 111" PID:LE0280

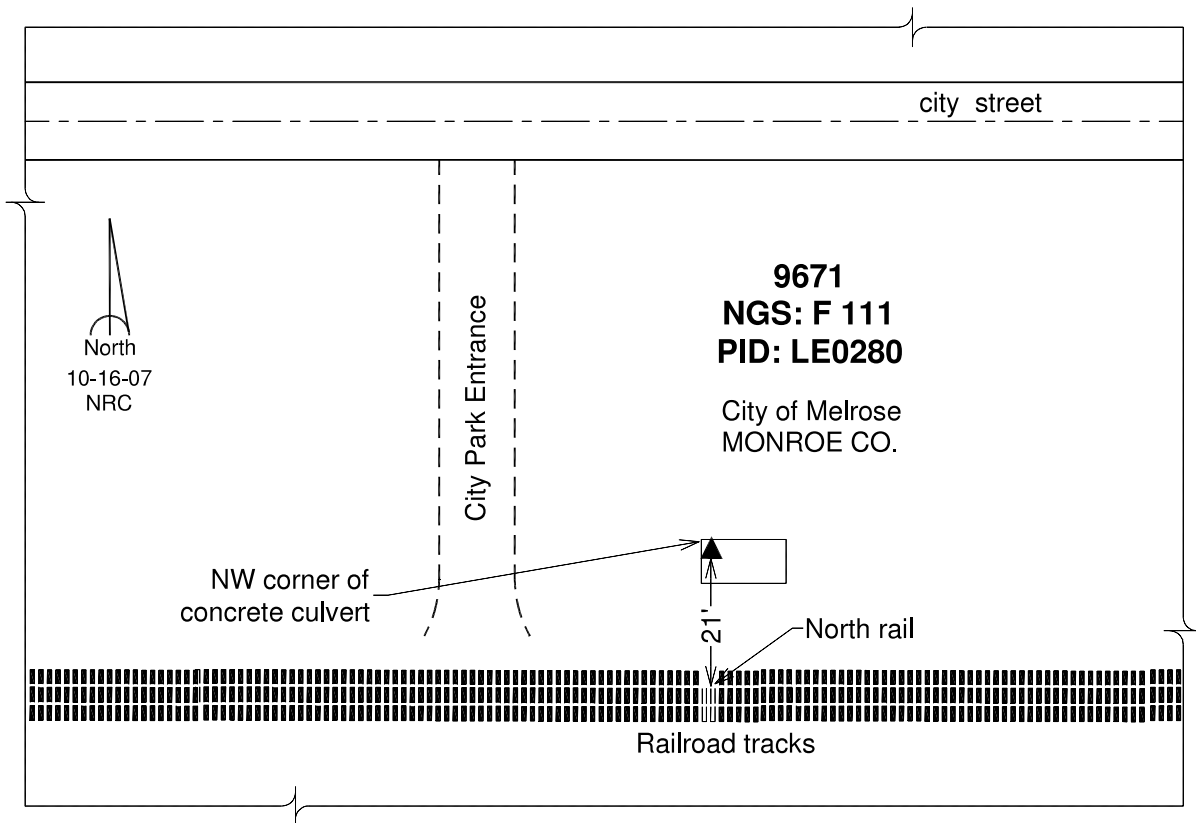
Northing: **355245.51**sft    Easting: **1763592.95**sft

Orthometric Height: **871.95**sft    Ellipsoid Height: **767.63**sft    **Geoid03**

Latitude: **40°58'27.10929"N**                      Longitude: **93°03'14.09663"W**

Mapping Angle: **0°17'38"**                      Combination Scale Factor: **0.99991953**

**Monument Type:** The station mark is a Coast & Geodetic Survey bench mark disk stamped "F 111 1935" and set in the northwest corner of a concrete slab.



*This document was prepared by DCI and GBC for use by Wayne County, Iowa.*