

Wayne County, Iowa
 Iowa South Zone (1402)
 Horiz. Datum: NAD83(NSRS2007)
 Vert. Datum: NAVD 1988
 US Survey Feet
2007

Point Name: **9869**

Designation: USGS 3rd order vertical control station "2 KED"

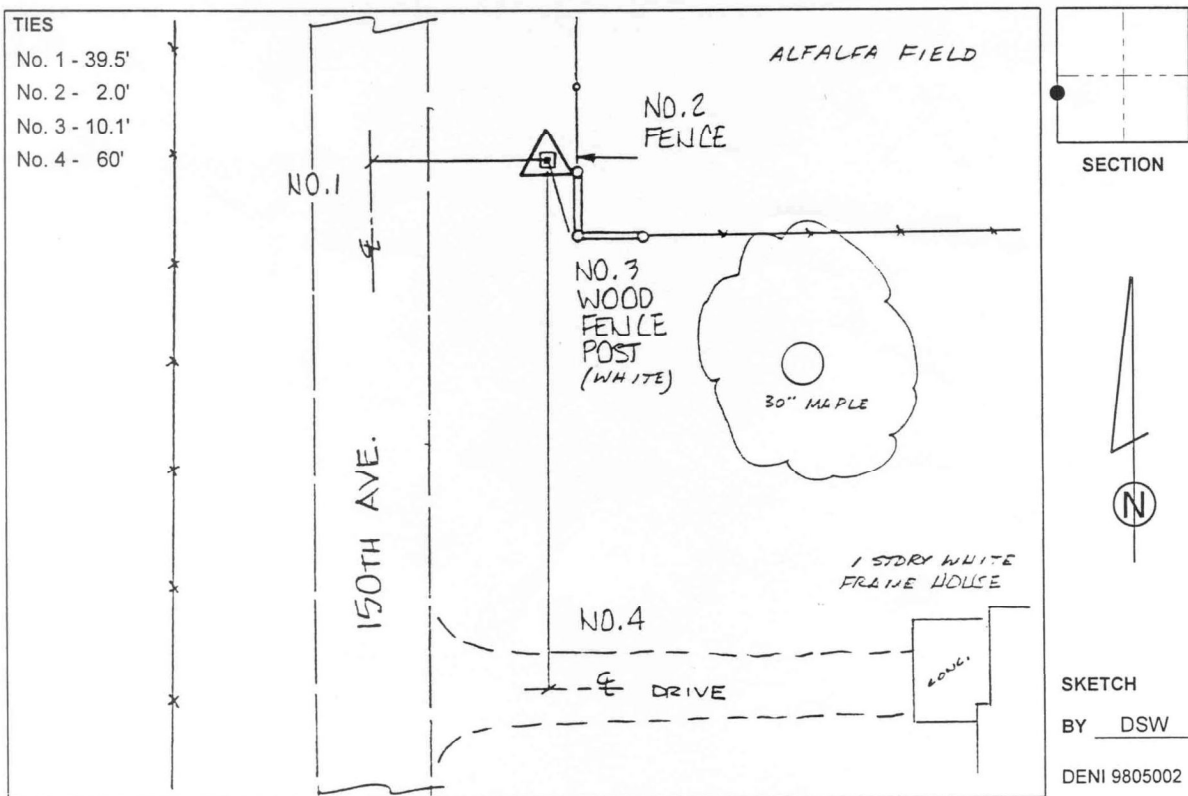
Northing: **308762.00**sft Easting: **1778177.47**sft

Orthometric Height: **998.60**sft Ellipsoid Height: **894.10**sft **Geoid03**

Latitude: **40°50'47.02284"N** Longitude: **93°00'07.42483"W**

Mapping Angle: **0°19'41"** Combination Scale Factor: **0.99992474**

Monument Type: The station mark is a USGS aluminum disk stamped "2 KED 1965" and set in the top of a sq. 7" x 7" concrete post.



This document was prepared by DCI and GBC for use by Wayne County, Iowa.