

GPS SURVEY MARK DESCRIPTION

GIS MAPPING BY:
THE SIDWELL COMPANY
WEST CHICAGO, ILLINOIS

THE OFFICE OF THE
COUNTY ENGINEER
WEBSTER COUNTY, IOWA

DESIGNATION 903031 3 GPS No. 6003 COUNTY WEBSTER STATE IOWA
 LOCATED IN SECTION 31 TWP 90 N RGE 30 W USGS QUAD MAP GILMORE CITY SW
 TO REACH FROM IN NE QUADRANT OF INTERSECTION OF 160TH STREET AND ADAMS AVENUE / WEBSTER -
POCAHONTAS COUNTY LINE.

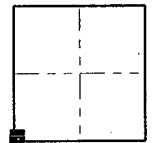
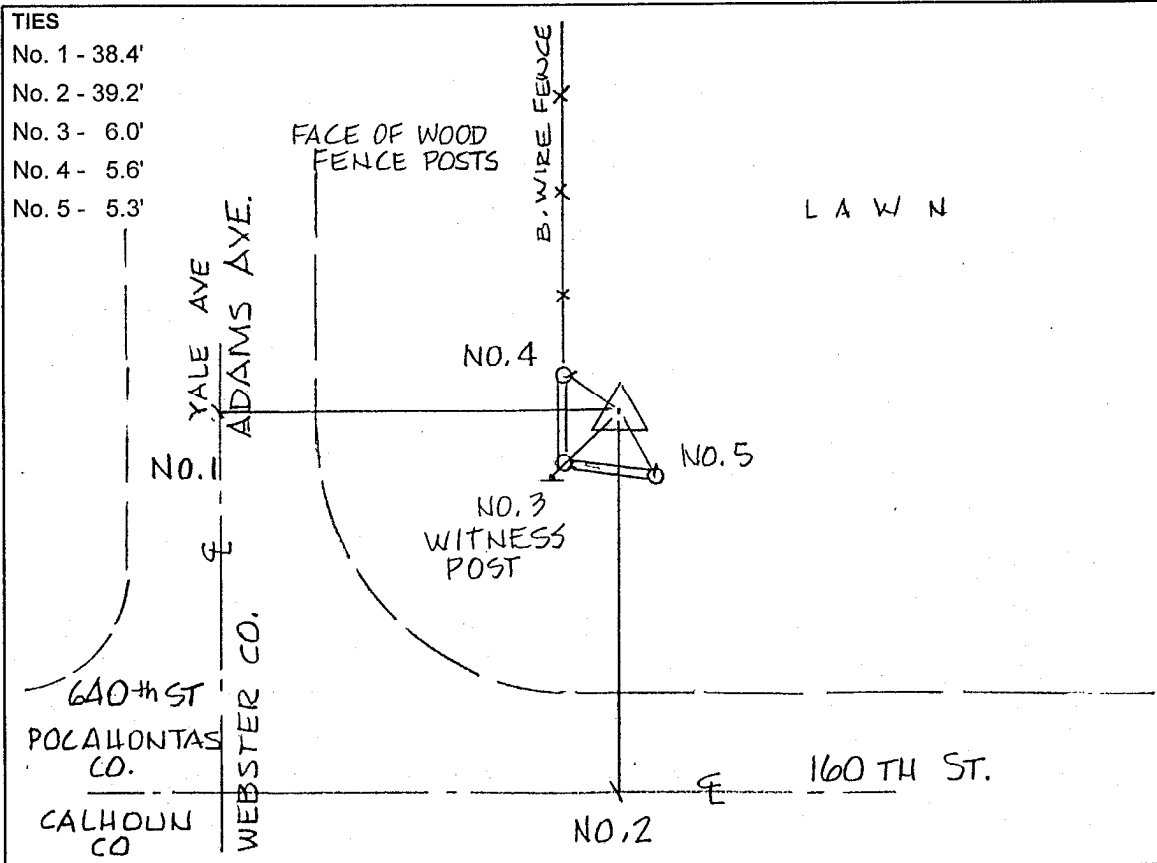
TYPE OF MARK BERNTSEN TOP SECURITY ROD MONUMENT WITH 3-1/4" ALUM. CAP SET WITHIN ACCESS COVER
 RECOVERED SET BY DENI ASSOCIATES, INC., FT. MYERS, FL DATE AUGUST 1996

HORIZONTAL CONTROL ORIGINATED ON ORDER "B" CONTROL BASED ON THE IOWA HIGH ACCURACY REFERENCE NETWORK, NORTH AMERICAN DATUM OF 1983/1997 ADJUSTMENT (NAD83/97).

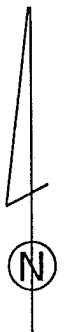
IOWA COORDINATE SYSTEM, NORTH ZONE GRID SCALE FACTOR: _____
 COORDINATES (US FEET) COORDINATES (METERS)
 NORTHING (Y) _____ NORTHING (Y) _____
 EASTING (X) _____ EASTING (X) _____

VERTICAL CONTROL ORIGINATED ON 1ST ORDER CONTROL ESTABLISHED BY NATIONAL GEODETIC SURVEY ON NORTH AMERICAN VERTICAL DATUM OF 1988 (NAVD88).

ELEVATION (US FEET) _____ ELEVATION (METERS) _____



SECTION



SKETCH
BY DSW
DENI 9605023