

GPS SURVEY MARK DESCRIPTION

GIS MAPPING BY:
THE SIDWELL COMPANY
WEST CHICAGO, ILLINOIS

THE OFFICE OF THE
COUNTY ENGINEER
WEBSTER COUNTY, IOWA

DESIGNATION 893003 4 GPS No. 6004 COUNTY WEBSTER STATE IOWA
LOCATED IN SECTION 3 TWP 89 N RGE 30 W USGS QUAD MAP GILMORE CITY SW
TO REACH FROM IN SE QUADRANT OF INTERSECTION OF 160TH STREET AND DAKOTA AVENUE.

TYPE OF MARK BERNTSEN TOP SECURITY ROD MONUMENT WITH 3-1/4" ALUM. CAP SET WITHIN ACCESS COVER

RECOVERED SET BY DENI ASSOCIATES, INC., FT. MYERS, FL DATE AUGUST 1996

HORIZONTAL CONTROL ORIGINATED ON ORDER "B" CONTROL BASED ON THE IOWA HIGH ACCURACY REFERENCE NETWORK, NORTH AMERICAN DATUM OF 1983/1997 ADJUSTMENT (NAD83/97).

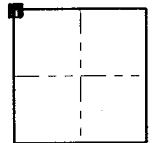
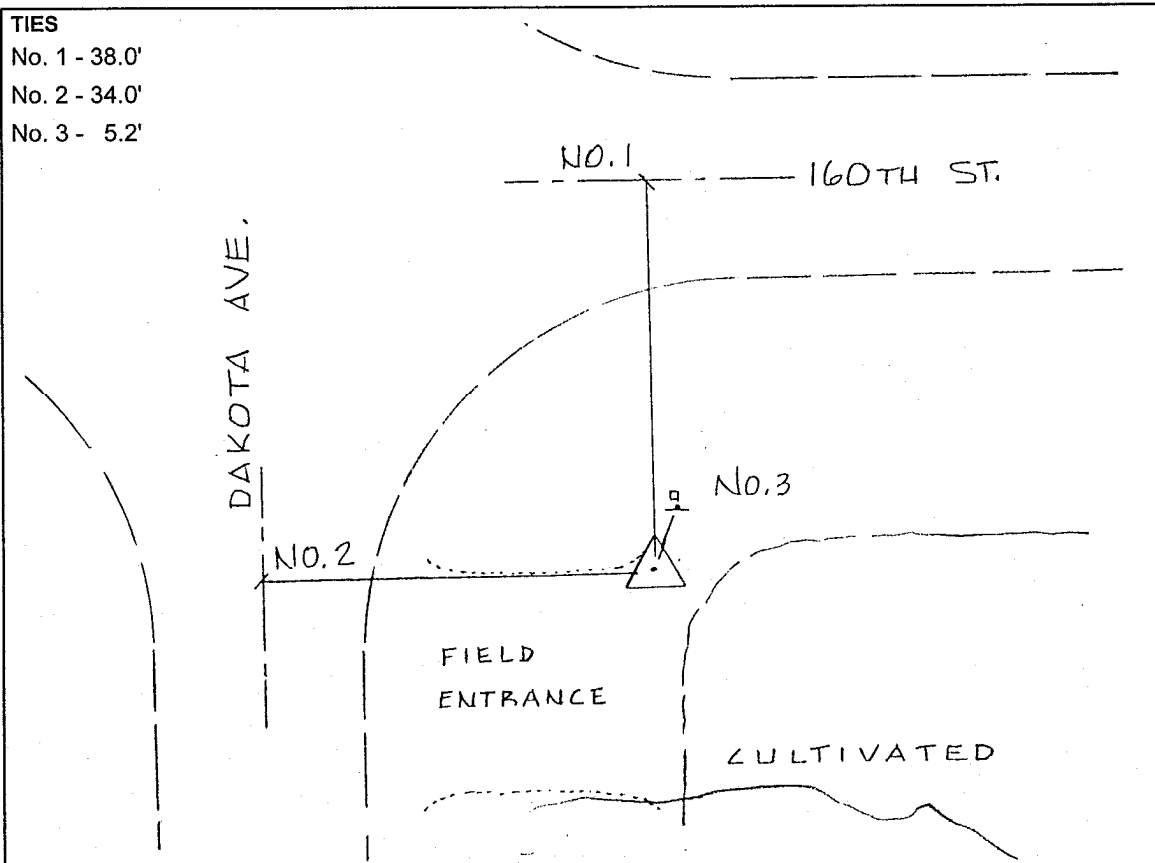
IOWA COORDINATE SYSTEM, NORTH ZONE GRID SCALE FACTOR: _____

COORDINATES (US FEET)	COORDINATES (METERS)
NORTHING (Y) _____	NORTHING (Y) _____
EASTING (X) _____	EASTING (X) _____

VERTICAL CONTROL ORIGINATED ON 1ST ORDER CONTROL ESTABLISHED BY NATIONAL GEODETIC SURVEY ON NORTH AMERICAN VERTICAL DATUM OF 1988 (NAVD88).

ELEVATION (US FEET) _____ ELEVATION (METERS) _____

TIES
No. 1 - 38.0'
No. 2 - 34.0'
No. 3 - 5.2'



SECTION



SKETCH
BY DSW
DENI 9605023