

# GPS SURVEY MARK DESCRIPTION

GIS MAPPING BY:  
THE SIDWELL COMPANY  
WEST CHICAGO, ILLINOIS

THE OFFICE OF THE  
COUNTY ENGINEER  
WEBSTER COUNTY, IOWA

DESIGNATION 902933 2 GPS No. 6010 COUNTY WEBSTER STATE IOWA  
 LOCATED IN SECTION 33 TWP 90 N RGE 29 W USGS QUAD MAP CLARE  
 TO REACH FROM INTERSECTION OF 160TH STREET AND JOHNSON AVENUE (P 41): GO WEST  
0.5 MILES TO MARK.

TYPE OF MARK BERNTSEN TOP SECURITY ROD MONUMENT WITH 3-1/4" ALUM. CAP SET WITHIN ACCESS COVER

RECOVERED  SET BY DENI ASSOCIATES, INC., FT. MYERS, FL DATE AUGUST 1996

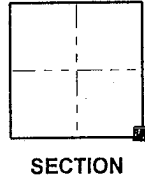
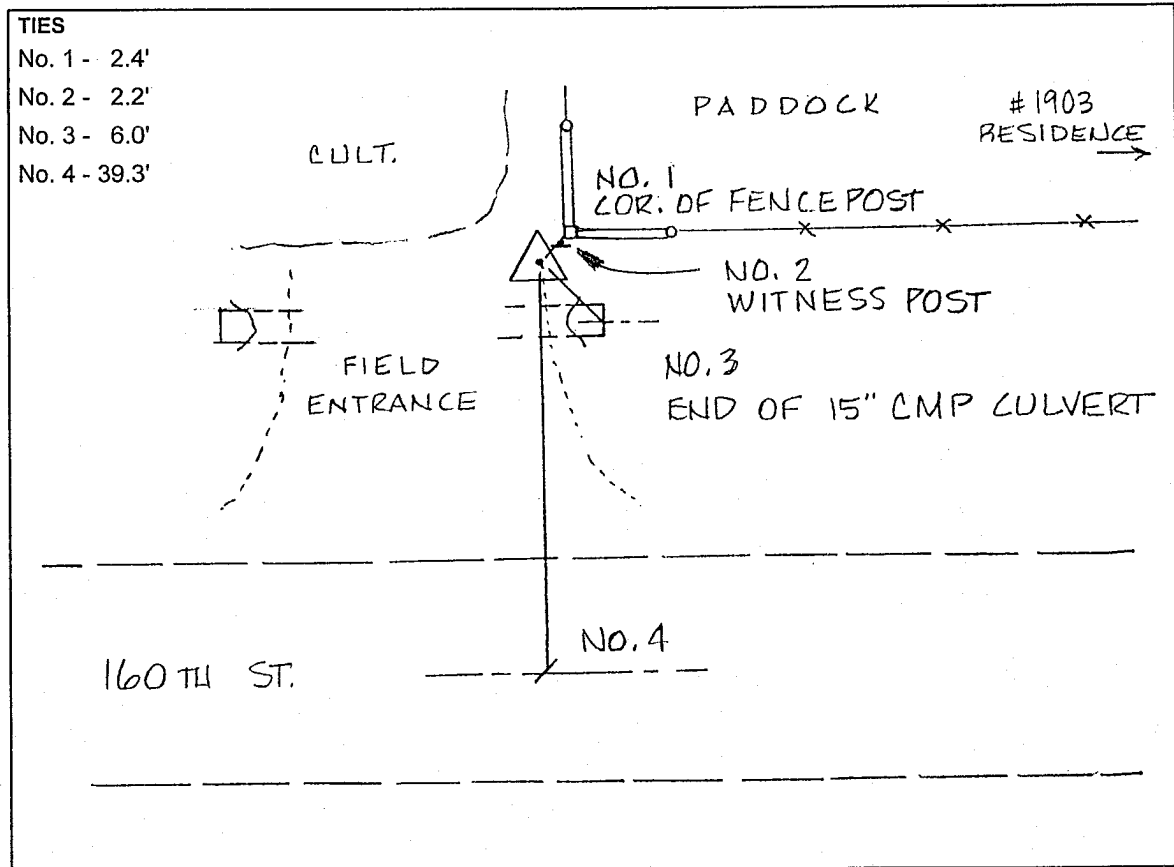
HORIZONTAL CONTROL ORIGINATED ON ORDER "B" CONTROL BASED ON THE IOWA HIGH ACCURACY REFERENCE NETWORK, NORTH AMERICAN DATUM OF 1983/1997 ADJUSTMENT (NAD83/97).

IOWA COORDINATE SYSTEM, NORTH ZONE GRID SCALE FACTOR: \_\_\_\_\_

COORDINATES (US FEET)	COORDINATES (METERS)
NORTHING (Y) _____	NORTHING (Y) _____
EASTING (X) _____	EASTING (X) _____

VERTICAL CONTROL ORIGINATED ON 1ST ORDER CONTROL ESTABLISHED BY NATIONAL GEODETIC SURVEY ON NORTH AMERICAN VERTICAL DATUM OF 1988 (NAVD88).

ELEVATION (US FEET) \_\_\_\_\_ ELEVATION (METERS) \_\_\_\_\_



SKETCH  
BY DSW  
DENI 9605023