

GPS SURVEY MARK DESCRIPTION

GIS MAPPING BY:
THE SIDWELL COMPANY
WEST CHICAGO, ILLINOIS

THE OFFICE OF THE
COUNTY ENGINEER
WEBSTER COUNTY, IOWA

DESIGNATION 902713 2 GPS No. 6026 COUNTY WEBSTER STATE IOWA
 LOCATED IN SECTION 13 TWP 90 N RGE 27 W USGS QUAD MAP EAGLE GROVE SW
 TO REACH FROM INTERSECTION OF 130TH STREET AND YANKEE AVENUE: GO EAST 0.5 MILES TO
WEBSTER - WRIGHT COUNTY LINE AND MARK.

TYPE OF MARK BERNTSEN TOP SECURITY ROD MONUMENT WITH 3-1/4" ALUM. CAP SET WITHIN ACCESS COVER

RECOVERED SET BY DENI ASSOCIATES, INC., FT. MYERS, FL DATE AUGUST 1996

HORIZONTAL CONTROL ORIGINATED ON ORDER "B" CONTROL BASED ON THE IOWA HIGH ACCURACY REFERENCE NETWORK, NORTH AMERICAN DATUM OF 1983/1997 ADJUSTMENT (NAD83/97).

IOWA COORDINATE SYSTEM, NORTH ZONE GRID SCALE FACTOR: _____

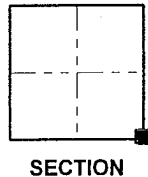
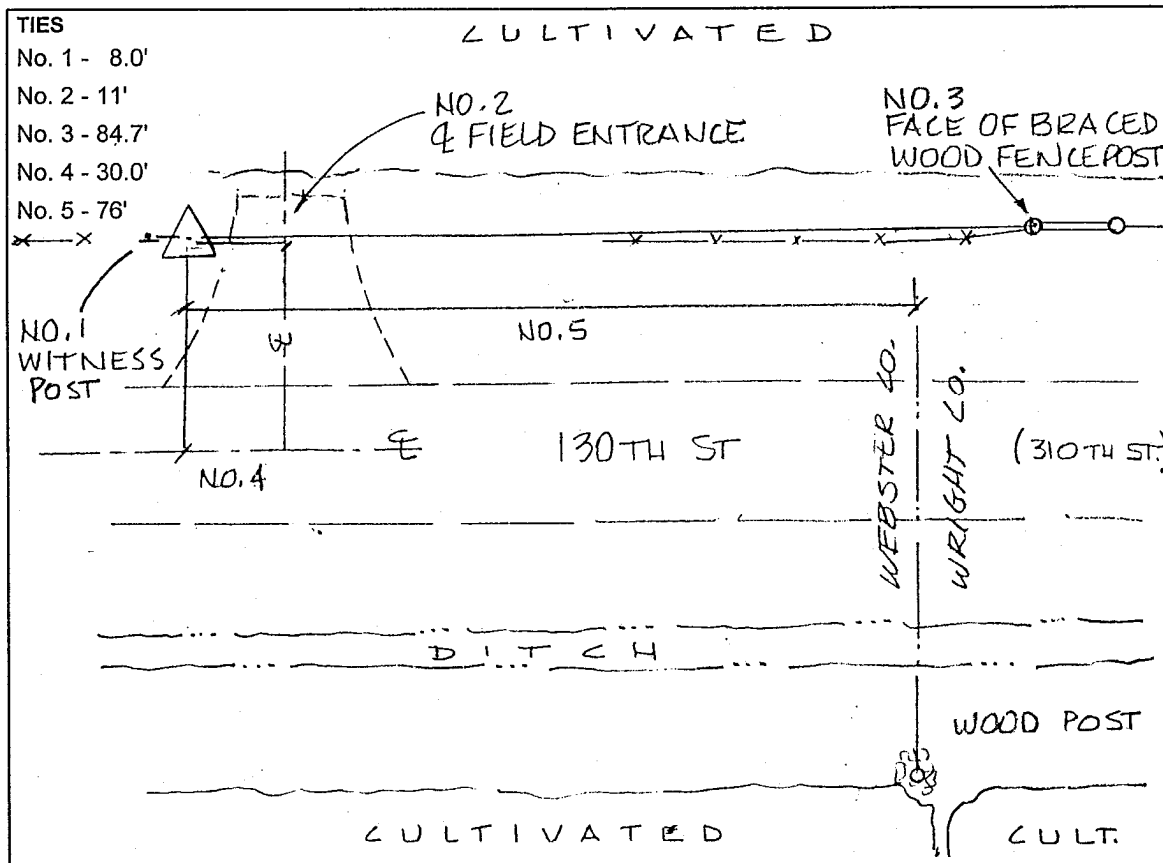
COORDINATES (US FEET) COORDINATES (METERS)

NORTHING (Y) _____ NORTHING (Y) _____

EASTING (X) _____ EASTING (X) _____

VERTICAL CONTROL ORIGINATED ON 1ST ORDER CONTROL ESTABLISHED BY NATIONAL GEODETIC SURVEY ON NORTH AMERICAN VERTICAL DATUM OF 1988 (NAVD88).

ELEVATION (US FEET) _____ ELEVATION (METERS) _____



SKETCH
 BY DSW
 DENI 9605023