

GPS SURVEY MARK DESCRIPTION

GIS MAPPING BY:
THE SIDWELL COMPANY
WEST CHICAGO, ILLINOIS

THE OFFICE OF THE
COUNTY ENGINEER
WEBSTER COUNTY, IOWA

DESIGNATION 892724 1 GPS No. 6028 COUNTY WEBSTER STATE IOWA
 LOCATED IN SECTION 24 TWP 89 N RGE 27 W USGS QUAD MAP EAGLE GROVE SW
 TO REACH FROM IN THE SOUTHWEST QUADRANT OF THE INTERSECTION OF 190TH STREET (D 18) AND
YANKEE AVENUE AT THE WEBSTER - HAMILTON COUNTY LINE.

TYPE OF MARK BERNTSEN TOP SECURITY ROD MONUMENT WITH 3-1/4" ALUM. CAP SET WITHIN ACCESS COVER

RECOVERED SET BY DENI ASSOCIATES, INC., FT. MYERS, FL DATE AUGUST 1996

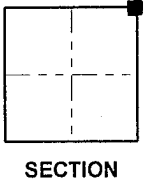
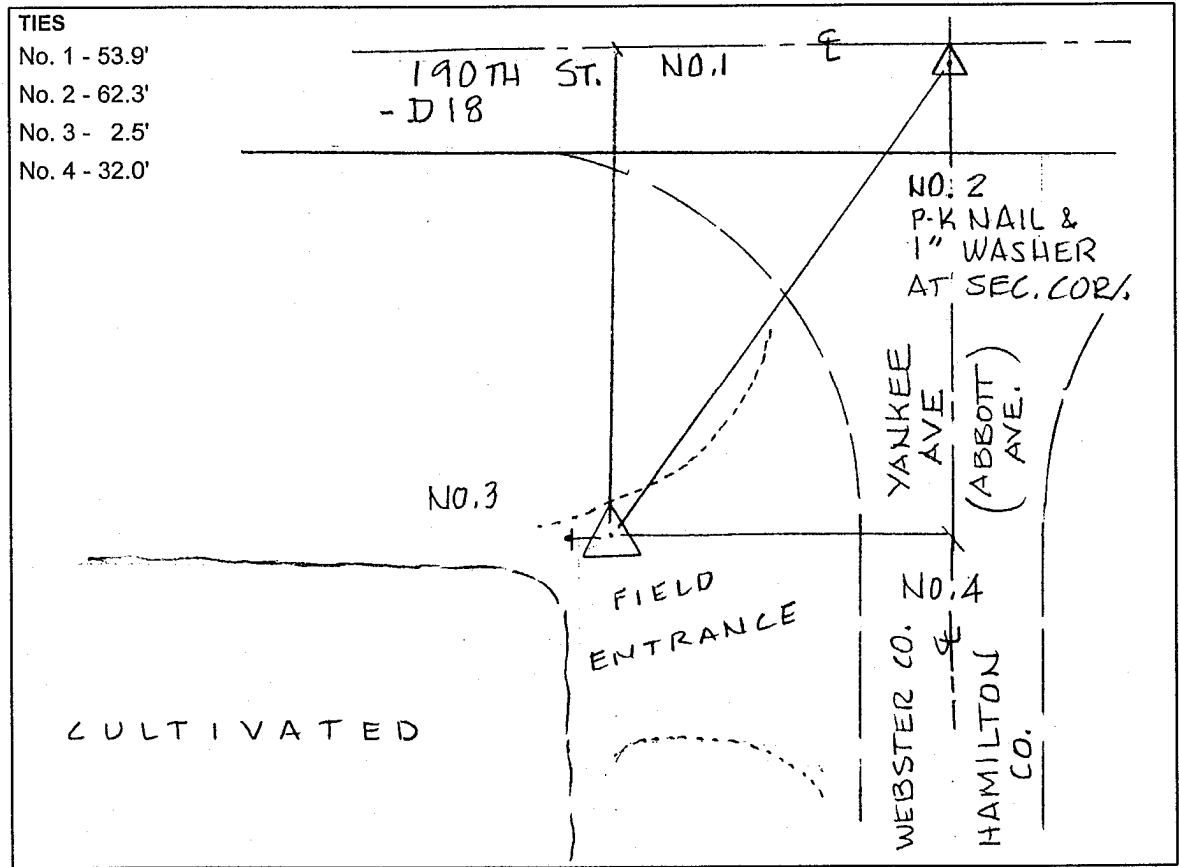
HORIZONTAL CONTROL ORIGINATED ON ORDER "B" CONTROL BASED ON THE IOWA HIGH ACCURACY REFERENCE NETWORK, NORTH AMERICAN DATUM OF 1983/1997 ADJUSTMENT (NAD83/97).

IOWA COORDINATE SYSTEM, NORTH ZONE GRID SCALE FACTOR: _____

COORDINATES (US FEET)	COORDINATES (METERS)
NORTHING (Y) _____	NORTHING (Y) _____
EASTING (X) _____	EASTING (X) _____

VERTICAL CONTROL ORIGINATED ON 1ST ORDER CONTROL ESTABLISHED BY NATIONAL GEODETIC SURVEY ON NORTH AMERICAN VERTICAL DATUM OF 1988 (NAVD88).

ELEVATION (US FEET) _____ ELEVATION (METERS) _____



SKETCH
BY DSW
DENI 9605023