

# GPS SURVEY MARK DESCRIPTION

GIS MAPPING BY:  
THE SIDWELL COMPANY  
WEST CHICAGO, ILLINOIS

THE OFFICE OF THE  
COUNTY ENGINEER  
WEBSTER COUNTY, IOWA

DESIGNATION 892736 2 GPS No. 6029 COUNTY WEBSTER STATE IOWA  
 LOCATED IN SECTION 36 TWP 89 N RGE 27 W USGS QUAD MAP DUNCOMBE  
 TO REACH FROM INTERSECTION OF 220TH STREET (D 20) AND XAVIER AVENUE (D 20) (TO NORTH):  
GO EAST 0.5 MILES TO MARK.

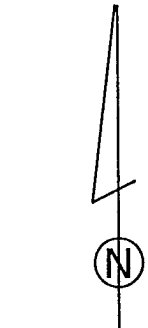
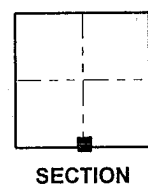
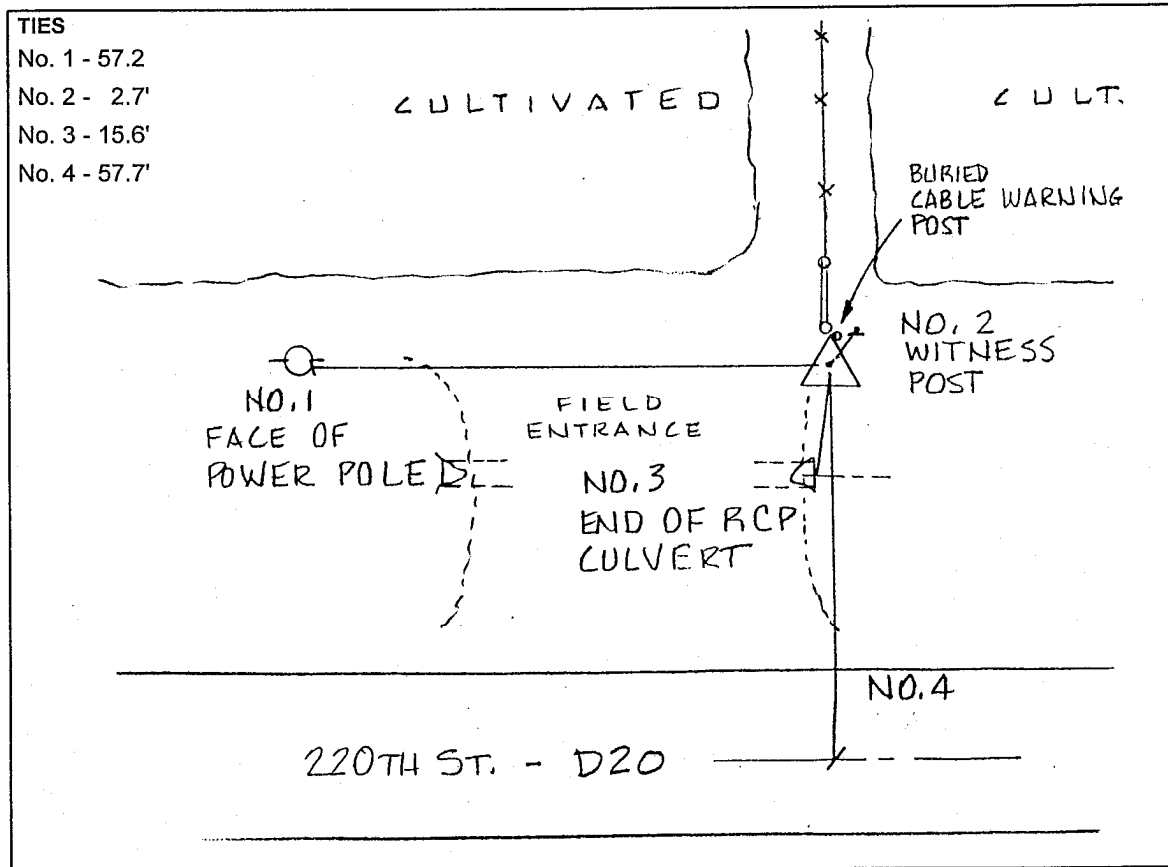
TYPE OF MARK BERNTSEN TOP SECURITY ROD MONUMENT WITH 3-1/4" ALUM. CAP SET WITHIN ACCESS COVER  
 RECOVERED  SET BY DENI ASSOCIATES, INC., FT. MYERS, FL DATE AUGUST 1996

HORIZONTAL CONTROL ORIGINATED ON ORDER "B" CONTROL BASED ON THE IOWA HIGH ACCURACY REFERENCE NETWORK, NORTH AMERICAN DATUM OF 1983/1997 ADJUSTMENT (NAD83/97).

IOWA COORDINATE SYSTEM, NORTH ZONE GRID SCALE FACTOR: \_\_\_\_\_  
 COORDINATES (US FEET) COORDINATES (METERS)  
 NORTHING (Y) \_\_\_\_\_ NORTHING (Y) \_\_\_\_\_  
 EASTING (X) \_\_\_\_\_ EASTING (X) \_\_\_\_\_

VERTICAL CONTROL ORIGINATED ON 1ST ORDER CONTROL ESTABLISHED BY NATIONAL GEODETIC SURVEY ON NORTH AMERICAN VERTICAL DATUM OF 1988 (NAVD88).

ELEVATION (US FEET) \_\_\_\_\_ ELEVATION (METERS) \_\_\_\_\_



SKETCH  
 BY DSW  
 DENI 9605023