

GPS SURVEY MARK DESCRIPTION

GIS MAPPING BY:
THE SIDWELL COMPANY
WEST CHICAGO, ILLINOIS

THE OFFICE OF THE
COUNTY ENGINEER
WEBSTER COUNTY, IOWA

DESIGNATION 872701 1 GPS No. 6032 COUNTY WEBSTER STATE IOWA
 LOCATED IN SECTION 1 TWP 87 N RGE 27 W USGS QUAD MAP DUNCOMBE
 TO REACH FROM IN THE SOUTHWEST QUADRANT OF YANKEE AVENUE AT THE WEBSTER - HAMILTON
COUNTY LINE AND 290TH STREET.

TYPE OF MARK BERNTSEN TOP SECURITY ROD MONUMENT WITH 3-1/4" ALUM. CAP SET WITHIN ACCESS COVER

RECOVERED SET BY DENI ASSOCIATES, INC., FT. MYERS, FL DATE AUGUST 1996

HORIZONTAL CONTROL ORIGINATED ON ORDER "B" CONTROL BASED ON THE IOWA HIGH ACCURACY REFERENCE NETWORK, NORTH AMERICAN DATUM OF 1983/1997 ADJUSTMENT (NAD83/97).

IOWA COORDINATE SYSTEM, NORTH ZONE GRID

SCALE FACTOR: _____

COORDINATES (US FEET)

COORDINATES (METERS)

NORTHING (Y) _____

NORTHING (Y) _____

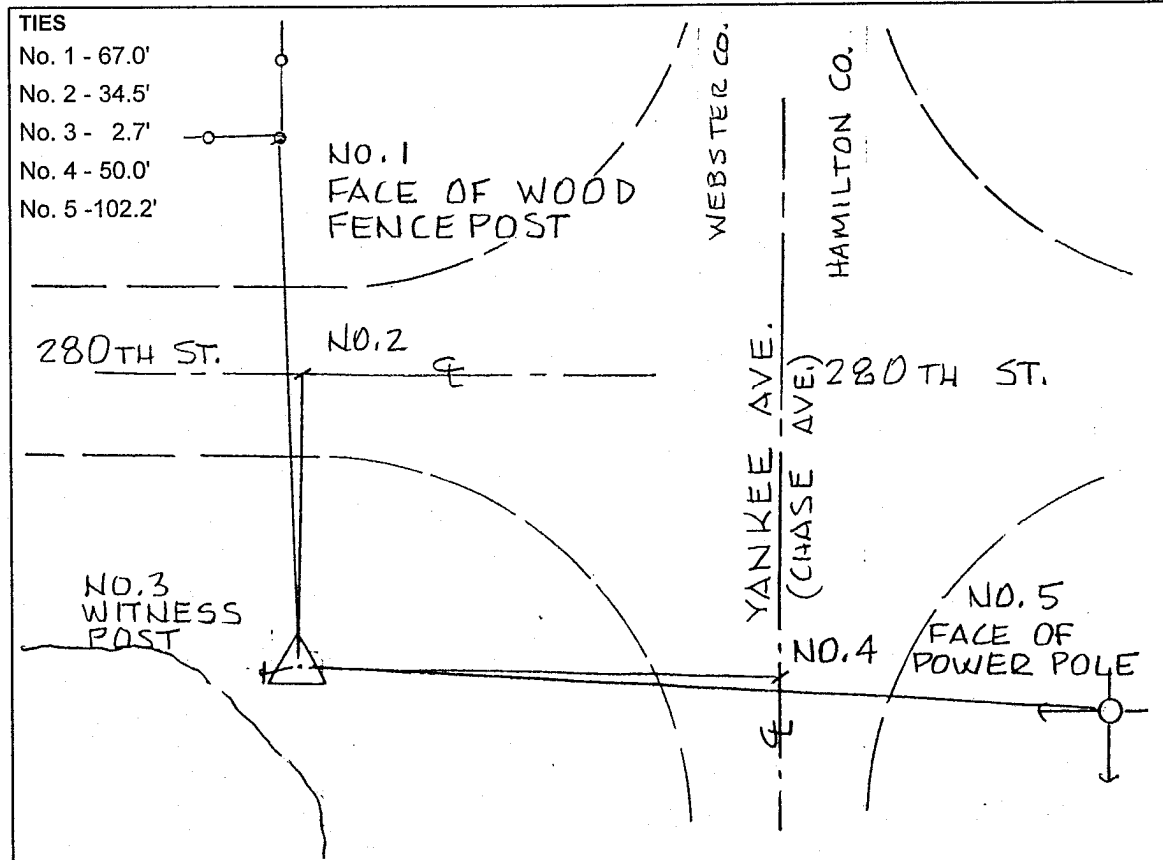
EASTING (X) _____

EASTING (X) _____

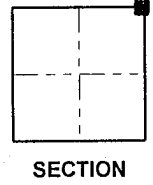
VERTICAL CONTROL ORIGINATED ON 1ST ORDER CONTROL ESTABLISHED BY NATIONAL GEODETIC SURVEY ON NORTH AMERICAN VERTICAL DATUM OF 1988 (NAVD88).

ELEVATION (US FEET) _____

ELEVATION (METERS) _____



- TIES
- No. 1 - 67.0'
 - No. 2 - 34.5'
 - No. 3 - 2.7'
 - No. 4 - 50.0'
 - No. 5 - 102.2'



SKETCH
BY DSW
DENI 9605023