

GPS SURVEY MARK DESCRIPTION

GIS MAPPING BY:
THE SIDWELL COMPANY
WEST CHICAGO, ILLINOIS

THE OFFICE OF THE
COUNTY ENGINEER
WEBSTER COUNTY, IOWA

DESIGNATION 882731 3 GPS No. 6034 COUNTY WEBSTER STATE IOWA
 LOCATED IN SECTION 31 TWP 88 N RGE 27 W USGS QUAD MAP EVANSTON
 TO REACH FROM INTERSECTION OF SAMSON AVENUE (P 6 D) AND 280TH STREET: GO NORTH 455 FEET,
MORE OR LESS, TO THE MARK.

TYPE OF MARK BERNTSEN TOP SECURITY ROD MONUMENT WITH 3-1/4" ALUM. CAP SET WITHIN ACCESS COVER

RECOVERED SET BY DENI ASSOCIATES, INC., FT. MYERS, FL DATE AUGUST 1996

HORIZONTAL CONTROL ORIGINATED ON ORDER "B" CONTROL BASED ON THE IOWA HIGH ACCURACY REFERENCE NETWORK, NORTH AMERICAN DATUM OF 1983/1997 ADJUSTMENT (NAD83/97).

IOWA COORDINATE SYSTEM, NORTH ZONE GRID SCALE FACTOR: _____

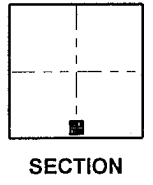
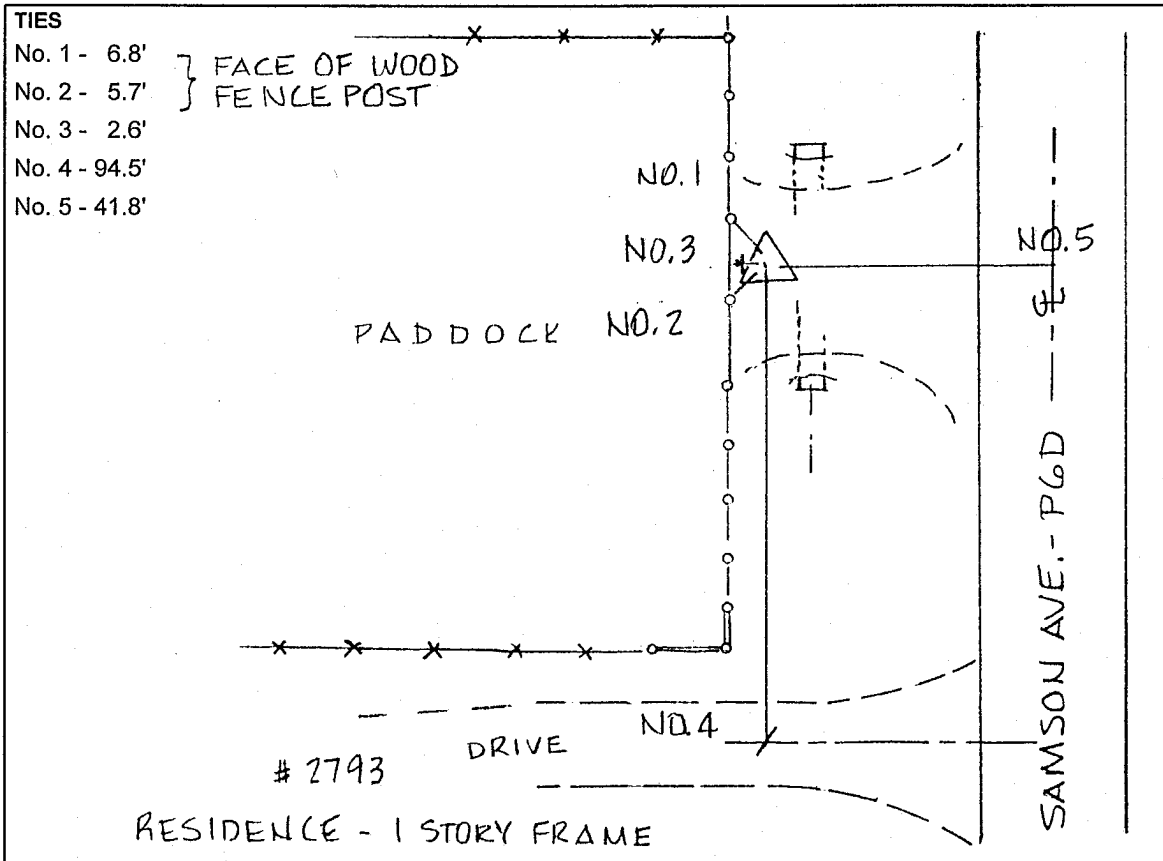
COORDINATES (US FEET) COORDINATES (METERS)

NORTHING (Y) _____ NORTHING (Y) _____

EASTING (X) _____ EASTING (X) _____

VERTICAL CONTROL ORIGINATED ON 1ST ORDER CONTROL ESTABLISHED BY NATIONAL GEODETIC SURVEY ON NORTH AMERICAN VERTICAL DATUM OF 1988 (NAVD88).

ELEVATION (US FEET) _____ ELEVATION (METERS) _____



SKETCH
BY DSW
DENI 9605023