

GPS SURVEY MARK DESCRIPTION

GIS MAPPING BY:
THE SIDWELL COMPANY
WEST CHICAGO, ILLINOIS

THE OFFICE OF THE
COUNTY ENGINEER
WEBSTER COUNTY, IOWA

DESIGNATION 892824 1 GPS No. 6038 COUNTY WEBSTER STATE IOWA
 LOCATED IN SECTION 24 TWP 89 N RGE 28 W USGS QUAD MAP VINCENT
 TO REACH FROM INTERSECTION OF 190TH STREET (D 18) AND SAMSON AVENUE (P 63) GO WEST
600 FEET, MORE OR LESS, TO THE MARK.

TYPE OF MARK BERNTSEN TOP SECURITY ROD MONUMENT WITH 3-1/4" ALUM. CAP SET WITHIN ACCESS COVER

RECOVERED SET BY DENI ASSOCIATES, INC., FT. MYERS, FL DATE AUGUST 1996

HORIZONTAL CONTROL ORIGINATED ON ORDER "B" CONTROL BASED ON THE IOWA HIGH ACCURACY REFERENCE NETWORK, NORTH AMERICAN DATUM OF 1983/1997 ADJUSTMENT (NAD83/97).

IOWA COORDINATE SYSTEM, NORTH ZONE GRID

SCALE FACTOR: _____

COORDINATES (US FEET)

COORDINATES (METERS)

NORTHING (Y) _____

NORTHING (Y) _____

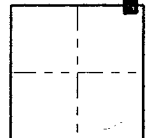
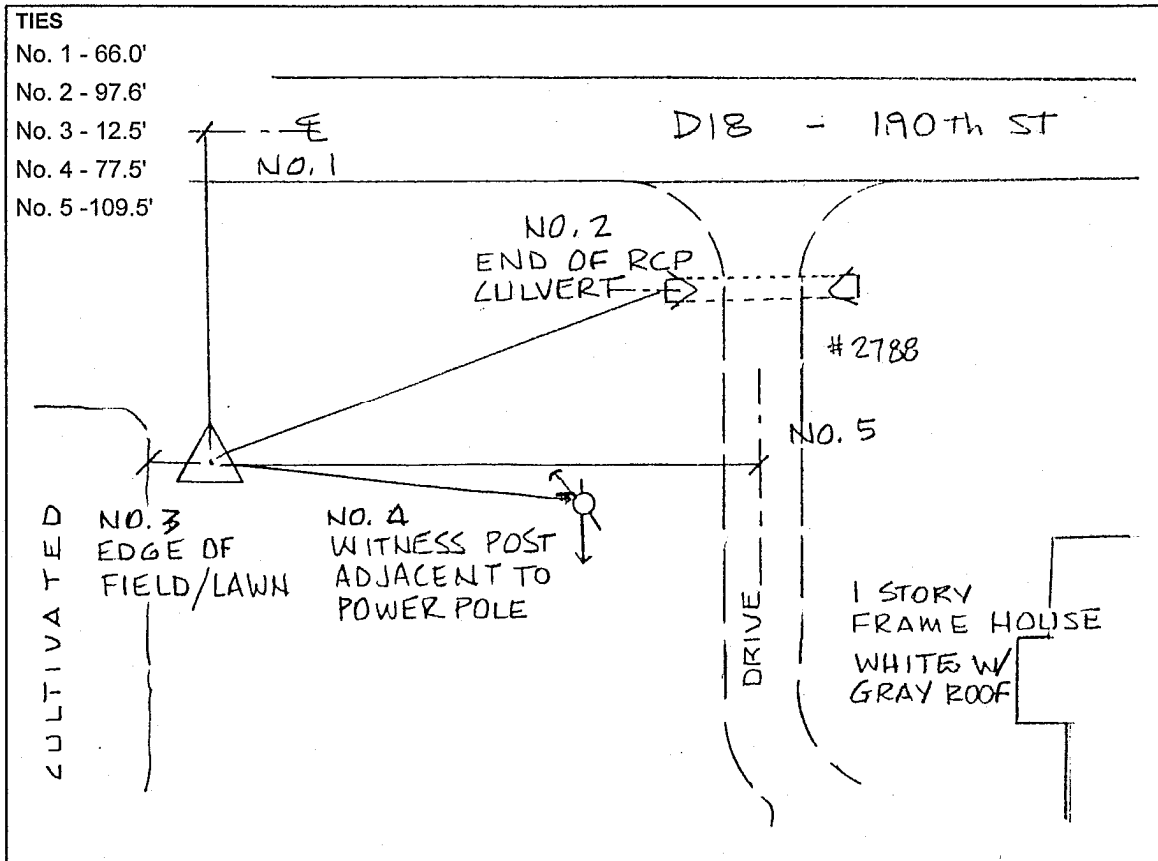
EASTING (X) _____

EASTING (X) _____

VERTICAL CONTROL ORIGINATED ON 1ST ORDER CONTROL ESTABLISHED BY NATIONAL GEODETIC SURVEY ON NORTH AMERICAN VERTICAL DATUM OF 1988 (NAVD88).

ELEVATION (US FEET) _____

ELEVATION (METERS) _____



SECTION



SKETCH

BY DSW

DENI 9605023