

# GPS SURVEY MARK DESCRIPTION

GIS MAPPING BY:  
THE SIDWELL COMPANY  
WEST CHICAGO, ILLINOIS

THE OFFICE OF THE  
COUNTY ENGINEER  
WEBSTER COUNTY, IOWA

DESIGNATION 882916 2 GPS No. 6048 COUNTY WEBSTER STATE IOWA  
 LOCATED IN SECTION 16 TWP 88 N RGE 29 W USGS QUAD MAP FORT DODGE SOUTH  
 TO REACH FROM IN THE NORTHWEST QUADRANT OF THE INTERSECTION OF JOHNSON AVENUE (P 51)  
AND 250TH STREET.

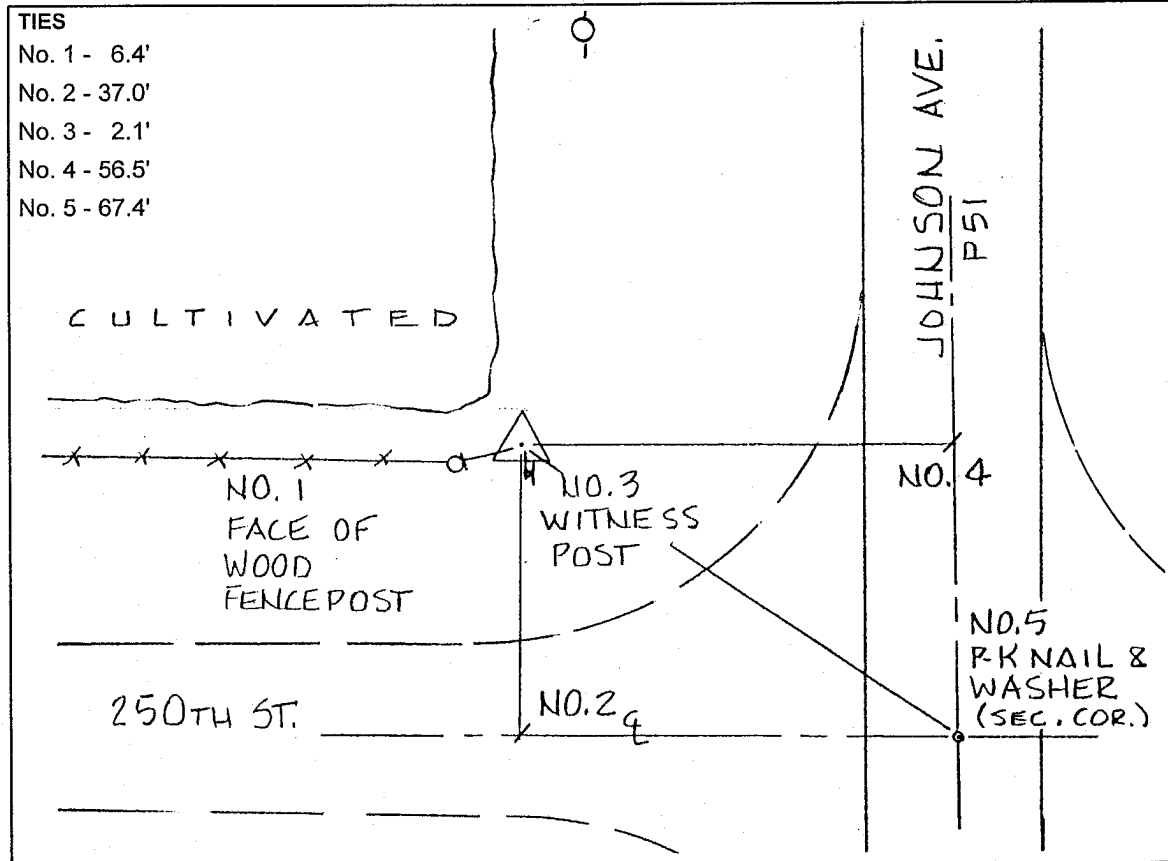
TYPE OF MARK BERNTSEN TOP SECURITY ROD MONUMENT WITH 3-1/4" ALUM. CAP SET WITHIN ACCESS COVER

RECOVERED  SET BY DENI ASSOCIATES, INC., FT. MYERS, FL DATE AUGUST 1996

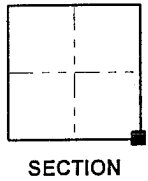
HORIZONTAL CONTROL ORIGINATED ON ORDER "B" CONTROL BASED ON THE IOWA HIGH ACCURACY REFERENCE NETWORK, NORTH AMERICAN DATUM OF 1983/1997 ADJUSTMENT (NAD83/97).

IOWA COORDINATE SYSTEM, NORTH ZONE GRID SCALE FACTOR: \_\_\_\_\_  
 COORDINATES (US FEET) COORDINATES (METERS)  
 NORTHING (Y) \_\_\_\_\_ NORTHING (Y) \_\_\_\_\_  
 EASTING (X) \_\_\_\_\_ EASTING (X) \_\_\_\_\_

VERTICAL CONTROL ORIGINATED ON 1ST ORDER CONTROL ESTABLISHED BY NATIONAL GEODETIC SURVEY ON NORTH AMERICAN VERTICAL DATUM OF 1988 (NAVD88).  
 ELEVATION (US FEET) \_\_\_\_\_ ELEVATION (METERS) \_\_\_\_\_



- TIES  
 No. 1 - 6.4'  
 No. 2 - 37.0'  
 No. 3 - 2.1'  
 No. 4 - 56.5'  
 No. 5 - 67.4'



SKETCH BY DSW  
 DENI 9605023