

# GPS SURVEY MARK DESCRIPTION

GIS MAPPING BY:  
THE SIDWELL COMPANY  
WEST CHICAGO, ILLINOIS

THE OFFICE OF THE  
COUNTY ENGINEER  
WEBSTER COUNTY, IOWA

DESIGNATION 892918 3 GPS No. 6054 COUNTY WEBSTER STATE IOWA  
 LOCATED IN SECTION 18 TWP 89 N RGE 29 W USGS QUAD MAP CLARE  
 TO REACH FROM THE INTERSECTION OF STATE HIGHWAY 7 (190TH STREET) AND FAIRBANKS AVENUE  
(P 29): GO EAST 1.0 MILE TO DRIVE NORTH AND MARK.

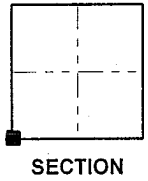
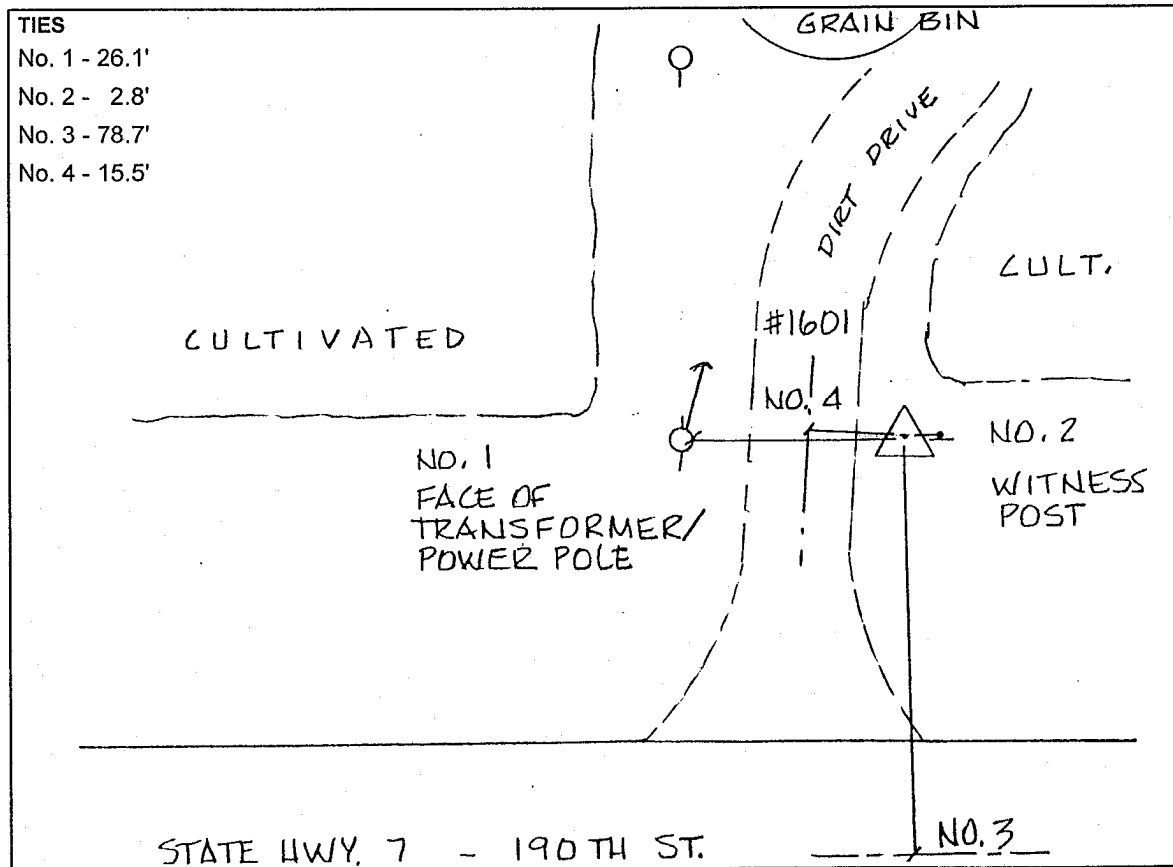
TYPE OF MARK BERNTSEN TOP SECURITY ROD MONUMENT WITH 3-1/4" ALUM. CAP SET WITHIN ACCESS COVER  
 RECOVERED  SET BY DENI ASSOCIATES, INC., FT. MYERS, FL DATE AUGUST 1996

HORIZONTAL CONTROL ORIGINATED ON ORDER "B" CONTROL BASED ON THE IOWA HIGH ACCURACY REFERENCE NETWORK, NORTH AMERICAN DATUM OF 1983/1997 ADJUSTMENT (NAD83/97).

IOWA COORDINATE SYSTEM, NORTH ZONE GRID	SCALE FACTOR: _____
COORDINATES (US FEET)	COORDINATES (METERS)
NORTHING (Y) _____	NORTHING (Y) _____
EASTING (X) _____	EASTING (X) _____

VERTICAL CONTROL ORIGINATED ON 1ST ORDER CONTROL ESTABLISHED BY NATIONAL GEODETIC SURVEY ON NORTH AMERICAN VERTICAL DATUM OF 1988 (NAVD88).

ELEVATION (US FEET) \_\_\_\_\_ ELEVATION (METERS) \_\_\_\_\_



SKETCH  
BY DSW  
DENI 9605023