

# GPS SURVEY MARK DESCRIPTION

GIS MAPPING BY:  
THE SIDWELL COMPANY  
WEST CHICAGO, ILLINOIS

THE OFFICE OF THE  
COUNTY ENGINEER  
WEBSTER COUNTY, IOWA

DESIGNATION 893036 2 GPS No. 6055 COUNTY WEBSTER STATE IOWA  
 LOCATED IN SECTION 36 TWP 89 N RGE 30 W USGS QUAD MAP MOORLAND  
 TO REACH FROM THE INTERSECTION OF 220TH STREET AND DAKOTA AVENUE (TO SOUTH), SOUTHEAST  
OF BARNUM: GO EASTERLY 0.5 MILES ON 220TH STREET TO FURROW AVENUE AND MARK.

TYPE OF MARK BERNTSEN TOP SECURITY ROD MONUMENT WITH 3-1/4" ALUM. CAP SET WITHIN ACCESS COVER

RECOVERED  SET BY DENI ASSOCIATES, INC., FT. MYERS, FL DATE AUGUST 1996

HORIZONTAL CONTROL ORIGINATED ON ORDER "B" CONTROL BASED ON THE IOWA HIGH ACCURACY REFERENCE NETWORK, NORTH AMERICAN DATUM OF 1983/1997 ADJUSTMENT (NAD83/97).

IOWA COORDINATE SYSTEM, NORTH ZONE GRID SCALE FACTOR: \_\_\_\_\_

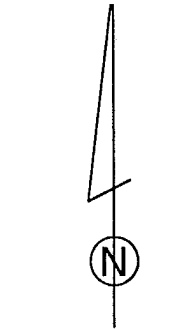
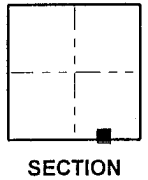
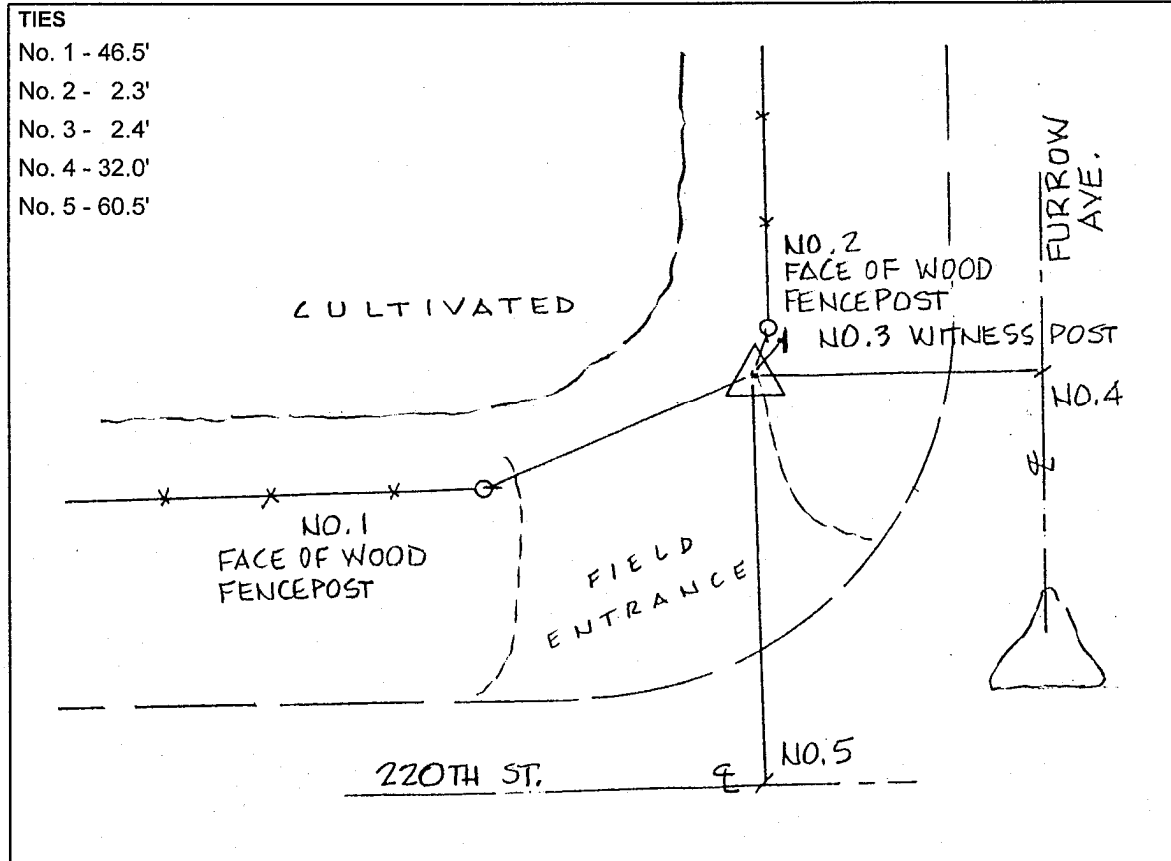
COORDINATES (US FEET) COORDINATES (METERS)

NORTHING (Y) \_\_\_\_\_ NORTHING (Y) \_\_\_\_\_

EASTING (X) \_\_\_\_\_ EASTING (X) \_\_\_\_\_

VERTICAL CONTROL ORIGINATED ON 1ST ORDER CONTROL ESTABLISHED BY NATIONAL GEODETIC SURVEY ON NORTH AMERICAN VERTICAL DATUM OF 1988 (NAVD88).

ELEVATION (US FEET) \_\_\_\_\_ ELEVATION (METERS) \_\_\_\_\_



SKETCH  
BY DSW

DENI 9605023