

GPS SURVEY MARK DESCRIPTION

GIS MAPPING BY:
THE SIDWELL COMPANY
WEST CHICAGO, ILLINOIS

THE OFFICE OF THE
COUNTY ENGINEER
WEBSTER COUNTY, IOWA

DESIGNATION 893016 2 GPS No. 6061 COUNTY WEBSTER STATE IOWA
 LOCATED IN SECTION 16 TWP 89 N RGE 30 W USGS QUAD MAP GILMORE CITY SW
 TO REACH FROM IN THE NORTHWEST QUADRANT OF THE INTERSECTION OF STATE HIGHWAY 7 (190TH STREET)
AND DAKOTA AVENUE.

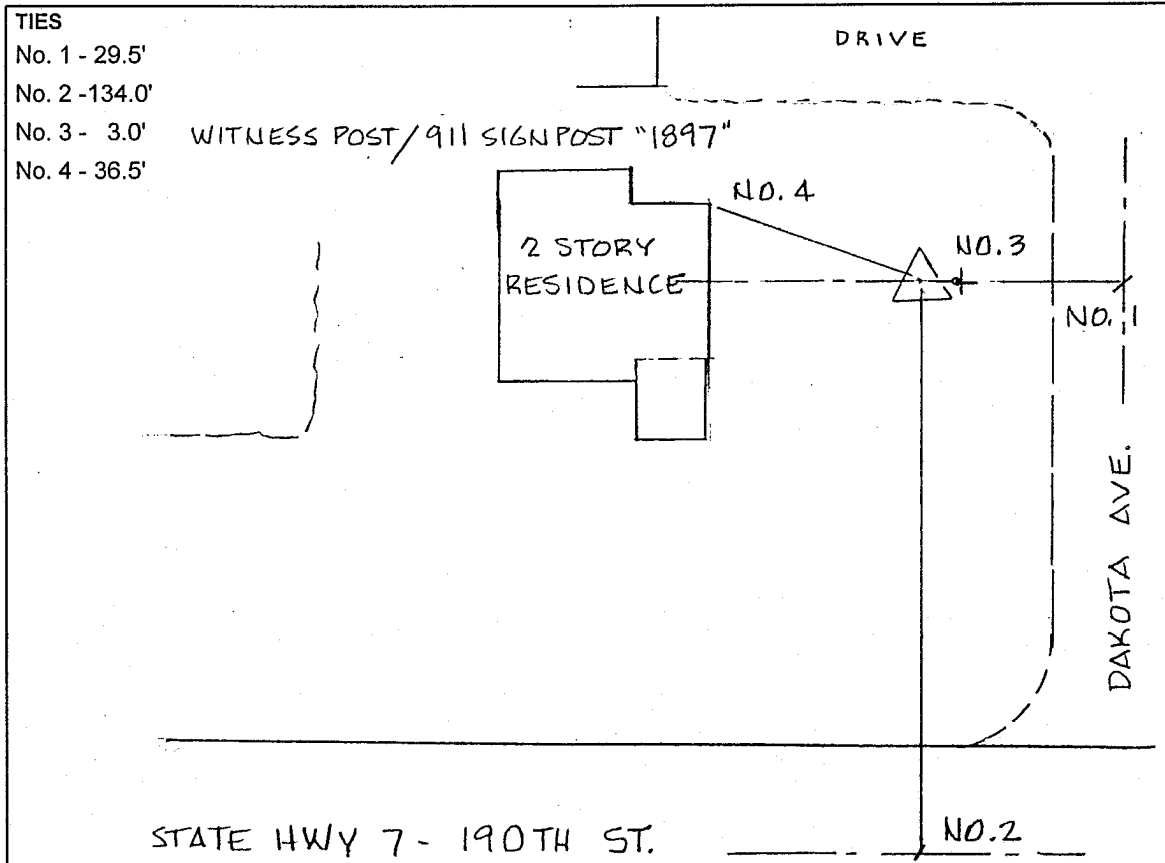
TYPE OF MARK BERNTSEN TOP SECURITY ROD MONUMENT WITH 3-1/4" ALUM. CAP SET WITHIN ACCESS COVER
 RECOVERED SET BY DENI ASSOCIATES, INC., FT. MYERS, FL DATE AUGUST 1996

HORIZONTAL CONTROL ORIGINATED ON ORDER "B" CONTROL BASED ON THE IOWA HIGH ACCURACY REFERENCE NETWORK, NORTH AMERICAN DATUM OF 1983/1997 ADJUSTMENT (NAD83/97).

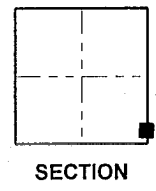
IOWA COORDINATE SYSTEM, NORTH ZONE GRID	SCALE FACTOR: _____
COORDINATES (US FEET)	COORDINATES (METERS)
NORTHING (Y) _____	NORTHING (Y) _____
EASTING (X) _____	EASTING (X) _____

VERTICAL CONTROL ORIGINATED ON 1ST ORDER CONTROL ESTABLISHED BY NATIONAL GEODETIC SURVEY ON NORTH AMERICAN VERTICAL DATUM OF 1988 (NAVD88).

ELEVATION (US FEET) _____ ELEVATION (METERS) _____



- TIES
- No. 1 - 29.5'
 - No. 2 - 134.0'
 - No. 3 - 3.0'
 - No. 4 - 36.5'



SECTION

SKETCH
BY DSW
DENI 9605023