

# GPS SURVEY MARK DESCRIPTION

GIS MAPPING BY:  
THE SIDWELL COMPANY  
WEST CHICAGO, ILLINOIS

THE OFFICE OF THE  
COUNTY ENGINEER  
WEBSTER COUNTY, IOWA

DESIGNATION 873021 1 GPS No. 6070 COUNTY WEBSTER STATE IOWA  
 LOCATED IN SECTION 21 TWP 87 N RGE 30 W USGS QUAD MAP GOWRIE  
 TO REACH FROM IN THE SOUTHWEST QUADRANT OF THE INTERSECTION OF 310TH STREET AND  
DAKOTA AVENUE, SOUTHWEST OF CALLENDER.

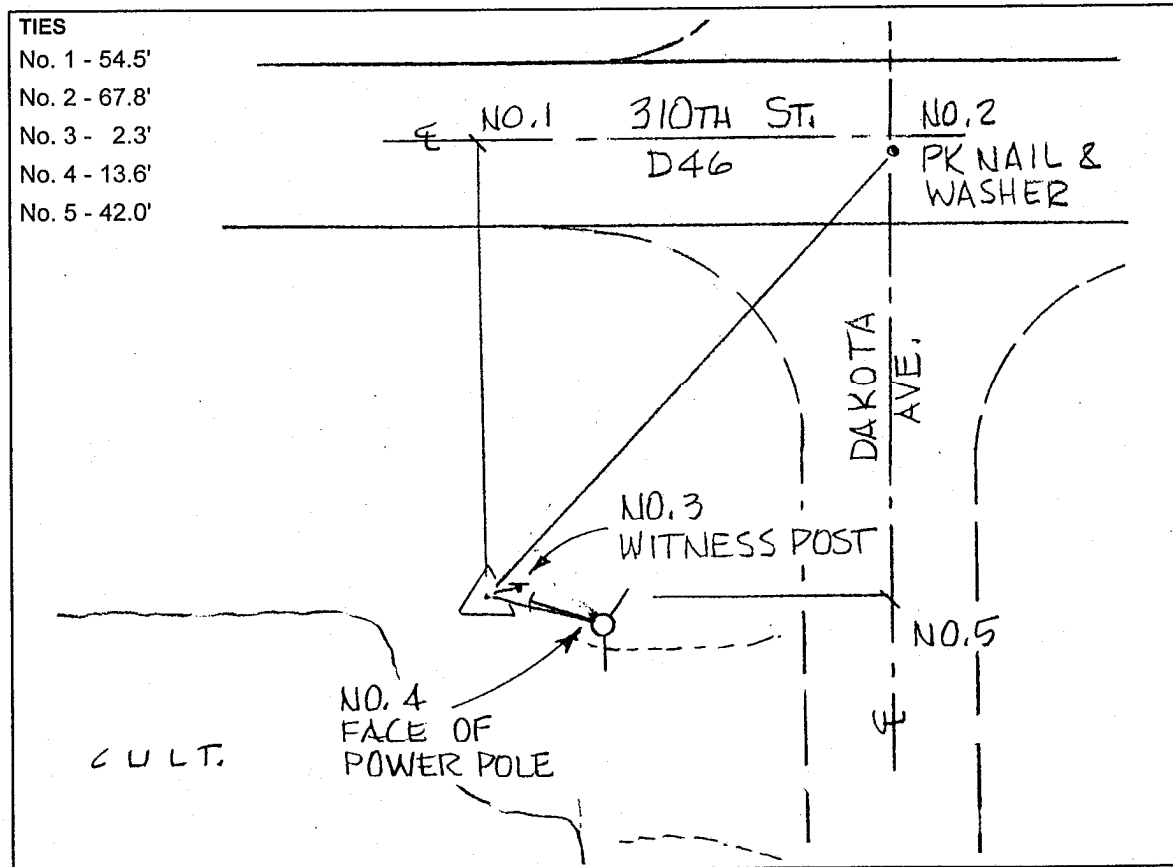
TYPE OF MARK BERNTSEN TOP SECURITY ROD MONUMENT WITH 3-1/4" ALUM. CAP SET WITHIN ACCESS COVER  
 RECOVERED  SET BY DENI ASSOCIATES, INC., FT. MYERS, FL DATE AUGUST 1996

HORIZONTAL CONTROL ORIGINATED ON ORDER "B" CONTROL BASED ON THE IOWA HIGH ACCURACY REFERENCE NETWORK, NORTH AMERICAN DATUM OF 1983/1997 ADJUSTMENT (NAD83/97).

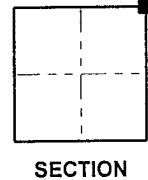
IOWA COORDINATE SYSTEM, NORTH ZONE GRID SCALE FACTOR: \_\_\_\_\_  
 COORDINATES (US FEET) COORDINATES (METERS)  
 NORTHING (Y) \_\_\_\_\_ NORTHING (Y) \_\_\_\_\_  
 EASTING (X) \_\_\_\_\_ EASTING (X) \_\_\_\_\_

VERTICAL CONTROL ORIGINATED ON 1ST ORDER CONTROL ESTABLISHED BY NATIONAL GEODETIC SURVEY ON NORTH AMERICAN VERTICAL DATUM OF 1988 (NAVD88).

ELEVATION (US FEET) \_\_\_\_\_ ELEVATION (METERS) \_\_\_\_\_



- TIES**
- No. 1 - 54.5'
  - No. 2 - 67.8'
  - No. 3 - 2.3'
  - No. 4 - 13.6'
  - No. 5 - 42.0'



SKETCH  
BY DSW  
DENI 9605023