

# GPS SURVEY MARK DESCRIPTION

GIS MAPPING BY:  
THE SIDWELL COMPANY  
WEST CHICAGO, ILLINOIS

THE OFFICE OF THE  
COUNTY ENGINEER  
WEBSTER COUNTY, IOWA

DESIGNATION 862804 1 GPS No. 6084 COUNTY WEBSTER STATE IOWA  
 LOCATED IN SECTION 4 TWP 86 N RGE 28 W USGS QUAD MAP LEHIGH  
 TO REACH FROM THE INTERSECTION OF PARAGON AVENUE (P 61) AND 330TH STREET: GO SOUTH  
1.0 MILE TO MARK.

TYPE OF MARK BERNTSEN TOP SECURITY ROD MONUMENT WITH 3-1/4" ALUM. CAP SET WITHIN ACCESS COVER

RECOVERED  SET BY DENI ASSOCIATES, INC., FT. MYERS, FL DATE AUGUST 1996

HORIZONTAL CONTROL ORIGINATED ON ORDER "B" CONTROL BASED ON THE IOWA HIGH ACCURACY REFERENCE NETWORK, NORTH AMERICAN DATUM OF 1983/1997 ADJUSTMENT (NAD83/97).

IOWA COORDINATE SYSTEM, NORTH ZONE GRID SCALE FACTOR: \_\_\_\_\_

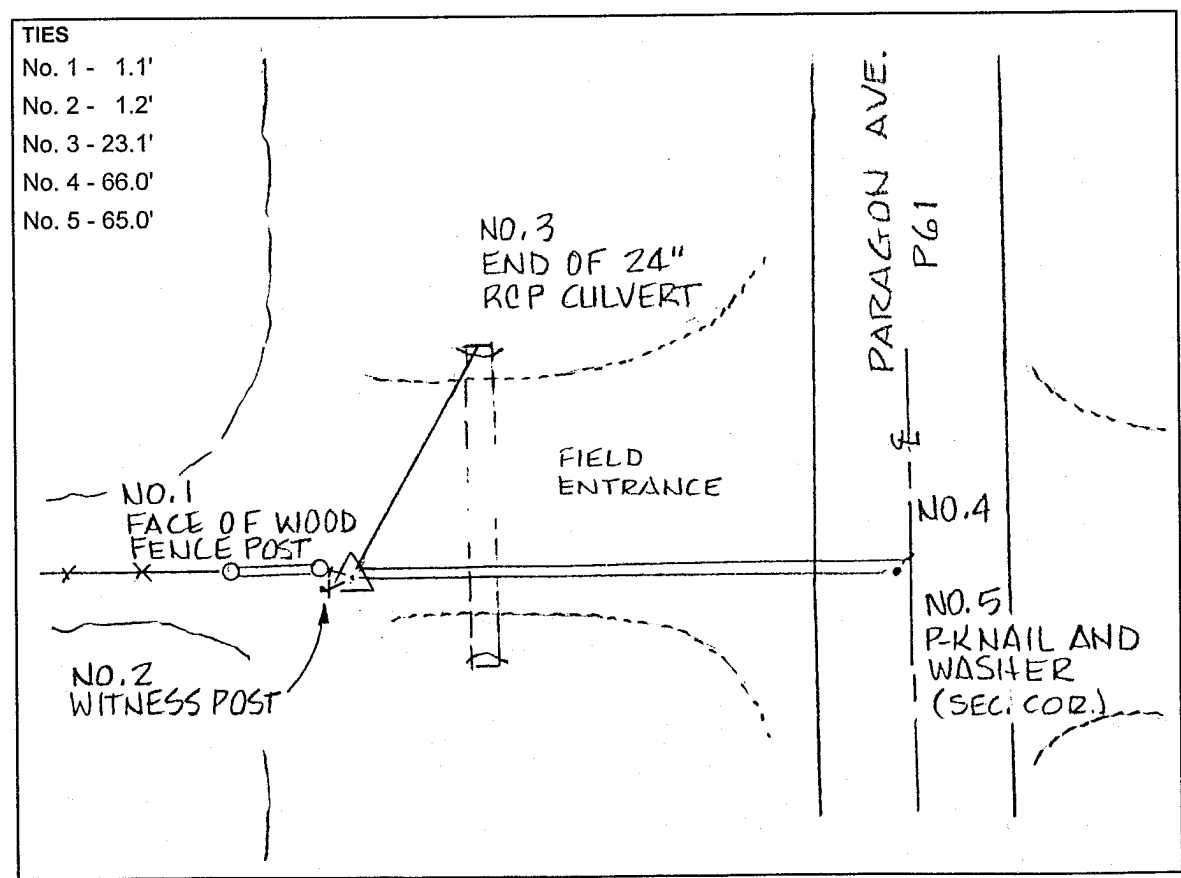
COORDINATES (US FEET) COORDINATES (METERS)

NORTHING (Y) \_\_\_\_\_ NORTHING (Y) \_\_\_\_\_

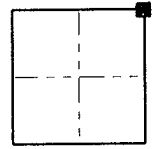
EASTING (X) \_\_\_\_\_ EASTING (X) \_\_\_\_\_

VERTICAL CONTROL ORIGINATED ON 1ST ORDER CONTROL ESTABLISHED BY NATIONAL GEODETIC SURVEY ON NORTH AMERICAN VERTICAL DATUM OF 1988 (NAVD88).

ELEVATION (US FEET) \_\_\_\_\_ ELEVATION (METERS) \_\_\_\_\_



- TIES
- No. 1 - 1.1'
  - No. 2 - 1.2'
  - No. 3 - 23.1'
  - No. 4 - 66.0'
  - No. 5 - 65.0'



SECTION



SKETCH  
BY DSW  
DENI 9605023