

GPS SURVEY MARK DESCRIPTION

GIS MAPPING BY:
THE SIDWELL COMPANY
WEST CHICAGO, ILLINOIS

THE OFFICE OF THE
COUNTY ENGINEER
WEBSTER COUNTY, IOWA

DESIGNATION 862836 2 GPS No. 6089 COUNTY WEBSTER STATE IOWA
 LOCATED IN SECTION 36 TWP 86 N RGE 28 W USGS QUAD MAP BOXHOLM
 TO REACH FROM IN THE NORTHWEST QUADRANT OF THE INTERSECTION OF SAMSON AVENUE AND 400TH
STREET, AT THE WEBSTER - BOONE COUNTY LINE.

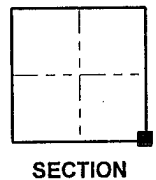
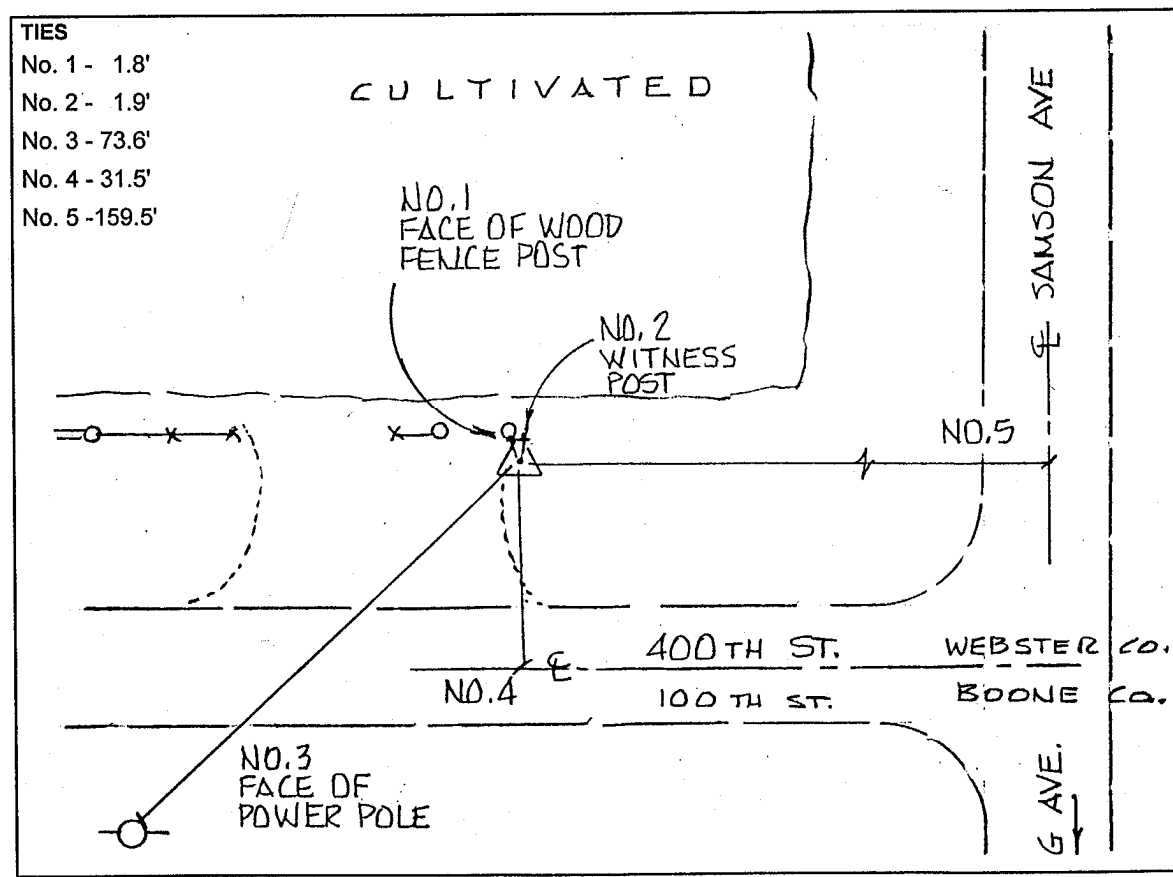
TYPE OF MARK BERNTSEN TOP SECURITY ROD MONUMENT WITH 3-1/4" ALUM. CAP SET WITHIN ACCESS COVER
 RECOVERED SET BY DENI ASSOCIATES, INC., FT. MYERS, FL DATE AUGUST 1996

HORIZONTAL CONTROL ORIGINATED ON ORDER "B" CONTROL BASED ON THE IOWA HIGH ACCURACY REFERENCE NETWORK, NORTH AMERICAN DATUM OF 1983/1997 ADJUSTMENT (NAD83/97).

IOWA COORDINATE SYSTEM, NORTH ZONE GRID SCALE FACTOR: _____
 COORDINATES (US FEET) COORDINATES (METERS)
 NORTHING (Y) _____ NORTHING (Y) _____
 EASTING (X) _____ EASTING (X) _____

VERTICAL CONTROL ORIGINATED ON 1ST ORDER CONTROL ESTABLISHED BY NATIONAL GEODETIC SURVEY ON NORTH AMERICAN VERTICAL DATUM OF 1988 (NAVD88).

ELEVATION (US FEET) _____ ELEVATION (METERS) _____



SKETCH
BY DSW
DENI 9605023