

GPS SURVEY MARK DESCRIPTION

GIS MAPPING BY:
THE SIDWELL COMPANY
WEST CHICAGO, ILLINOIS

THE OFFICE OF THE
COUNTY ENGINEER
WEBSTER COUNTY, IOWA

DESIGNATION 862733 2 GPS No. 6090 COUNTY WEBSTER STATE IOWA

LOCATED IN SECTION 33 TWP 86 N RGE 27 W USGS QUAD MAP FRASER

TO REACH FROM THE INTERSECTION OF TAYLOR AVENUE (P 70) AND 390TH STREET: GO EAST 1.75 MILES TO VASSE AVENUE; THENCE SOUTH, EAST AND SOUTH ON VASSE AVENUE FOR 0.7 MILES TO CURVE EAST/ 396TH STREET, AND MARK.

TYPE OF MARK BERNTSEN TOP SECURITY ROD MONUMENT WITH 3-1/4" ALUM. CAP SET WITHIN ACCESS COVER

RECOVERED SET BY DENI ASSOCIATES, INC., FT. MYERS, FL DATE AUGUST 1996

HORIZONTAL CONTROL ORIGINATED ON ORDER "B" CONTROL BASED ON THE IOWA HIGH ACCURACY REFERENCE NETWORK, NORTH AMERICAN DATUM OF 1983/1997 ADJUSTMENT (NAD83/97).

IOWA COORDINATE SYSTEM, NORTH ZONE GRID SCALE FACTOR: _____

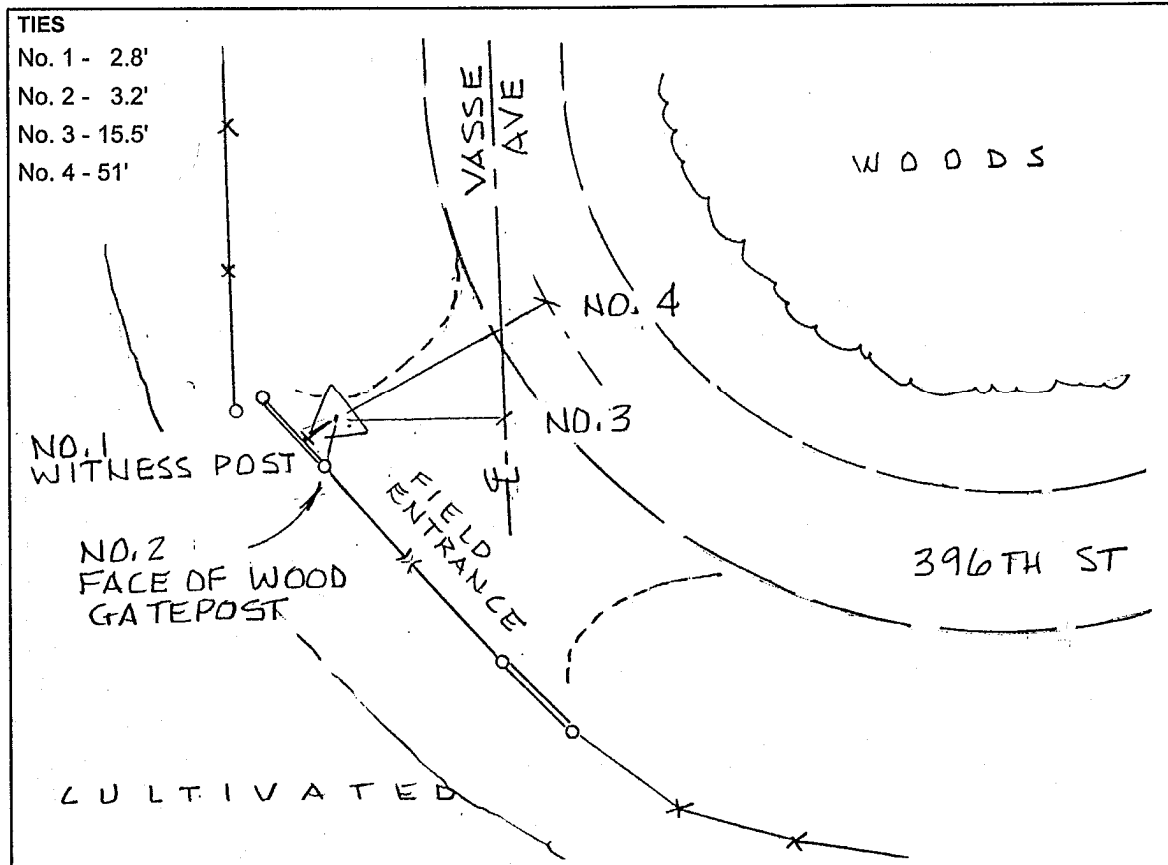
COORDINATES (US FEET) COORDINATES (METERS)

NORTHING (Y) _____ NORTHING (Y) _____

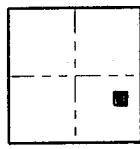
EASTING (X) _____ EASTING (X) _____

VERTICAL CONTROL ORIGINATED ON 1ST ORDER CONTROL ESTABLISHED BY NATIONAL GEODETIC SURVEY ON NORTH AMERICAN VERTICAL DATUM OF 1988 (NAVD88).

ELEVATION (US FEET) _____ ELEVATION (METERS) _____



- TIES
- No. 1 - 2.8'
 - No. 2 - 3.2'
 - No. 3 - 15.5'
 - No. 4 - 51'



SECTION

SKETCH
BY DSW
DENI 9605023