

GPS SURVEY MARK DESCRIPTION

GIS MAPPING BY:
THE SIDWELL COMPANY
WEST CHICAGO, ILLINOIS

THE OFFICE OF THE
COUNTY ENGINEER
WEBSTER COUNTY, IOWA

DESIGNATION 872722 4 GPS No. 6092 COUNTY WEBSTER STATE IOWA

LOCATED IN SECTION 22 TWP 87 N RGE 27 W USGS QUAD MAP STRATFORD

TO REACH FROM THE INTERSECTION OF 330TH STREET (D 54) AND VASSE AVENUE: GO NORTH 1.0 MILE TO 320TH STREET; THENCE CONTINUE NORTH ON MCGUIRE BEND ROAD FOR 0.95 MILES TO #3144 RESIDENCE AND MARK. LOCATED ON PRIVATE PROPERTY WITH PERMISSION.

TYPE OF MARK BERNTSEN TOP SECURITY ROD MONUMENT WITH 3-1/4" ALUM. CAP SET WITHIN ACCESS COVER

RECOVERED SET BY DENI ASSOCIATES, INC., FT. MYERS, FL DATE AUGUST 1996

HORIZONTAL CONTROL ORIGINATED ON ORDER "B" CONTROL BASED ON THE IOWA HIGH ACCURACY REFERENCE NETWORK, NORTH AMERICAN DATUM OF 1983/1997 ADJUSTMENT (NAD83/97).

IOWA COORDINATE SYSTEM, NORTH ZONE GRID

SCALE FACTOR: _____

COORDINATES (US FEET)

COORDINATES (METERS)

NORTHING (Y) _____

NORTHING (Y) _____

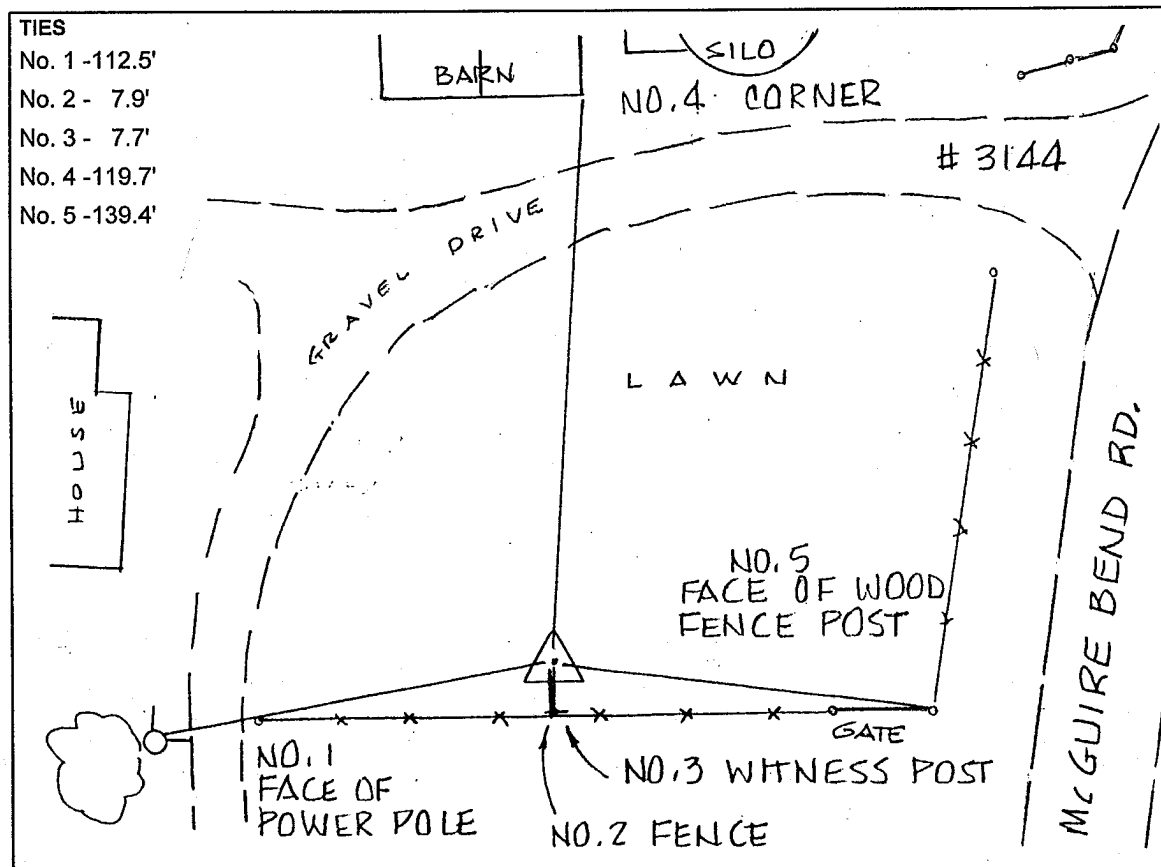
EASTING (X) _____

EASTING (X) _____

VERTICAL CONTROL ORIGINATED ON 1ST ORDER CONTROL ESTABLISHED BY NATIONAL GEODETIC SURVEY ON NORTH AMERICAN VERTICAL DATUM OF 1988 (NAVD88).

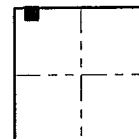
ELEVATION (US FEET) _____

ELEVATION (METERS) _____

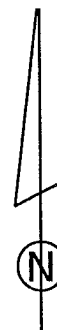


TIES

- No. 1 - 112.5'
- No. 2 - 7.9'
- No. 3 - 7.7'
- No. 4 - 119.7'
- No. 5 - 139.4'



SECTION



SKETCH

BY DSW

DENI 9605023