

# GPS SURVEY MARK DESCRIPTION

GIS MAPPING BY:  
THE SIDWELL COMPANY  
WEST CHICAGO, ILLINOIS

THE OFFICE OF THE  
COUNTY ENGINEER  
WEBSTER COUNTY, IOWA

DESIGNATION ET 2 HK GPS No. 9614 COUNTY WEBSTER STATE IOWA

LOCATED IN SECTION 13 TWP 86 N RGE 30 W USGS QUAD MAP GOWRIE

TO REACH FROM THE INTERSECTION OF GARFIELD AVENUE AND 370TH STREET, SOUTH OF GOWRIE:

GO WEST 330 FEET, MORE OR LESS, TO THE MARK.

DISC IS STAMPED "ET 2 HK 1964" (NO ELEVATION)

TYPE OF MARK STANDARD METAL USGS DISC IN 8" DIAMETER CONCRETE POST PROJECTING 6" ABOVE.

MARK RECOVERED  GPS VALUES SET BY DENI ASSOCIATES, INC., FT. MYERS, FL DATE AUGUST 1996

HORIZONTAL CONTROL ORIGINATED ON ORDER "B" CONTROL BASED ON THE IOWA HIGH ACCURACY REFERENCE NETWORK, NORTH AMERICAN DATUM OF 1983/1997 ADJUSTMENT (NAD83/97).

IOWA COORDINATE SYSTEM, NORTH ZONE GRID SCALE FACTOR: \_\_\_\_\_

COORDINATES (US FEET) COORDINATES (METERS)

NORTHING (Y) \_\_\_\_\_ NORTHING (Y) \_\_\_\_\_

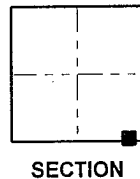
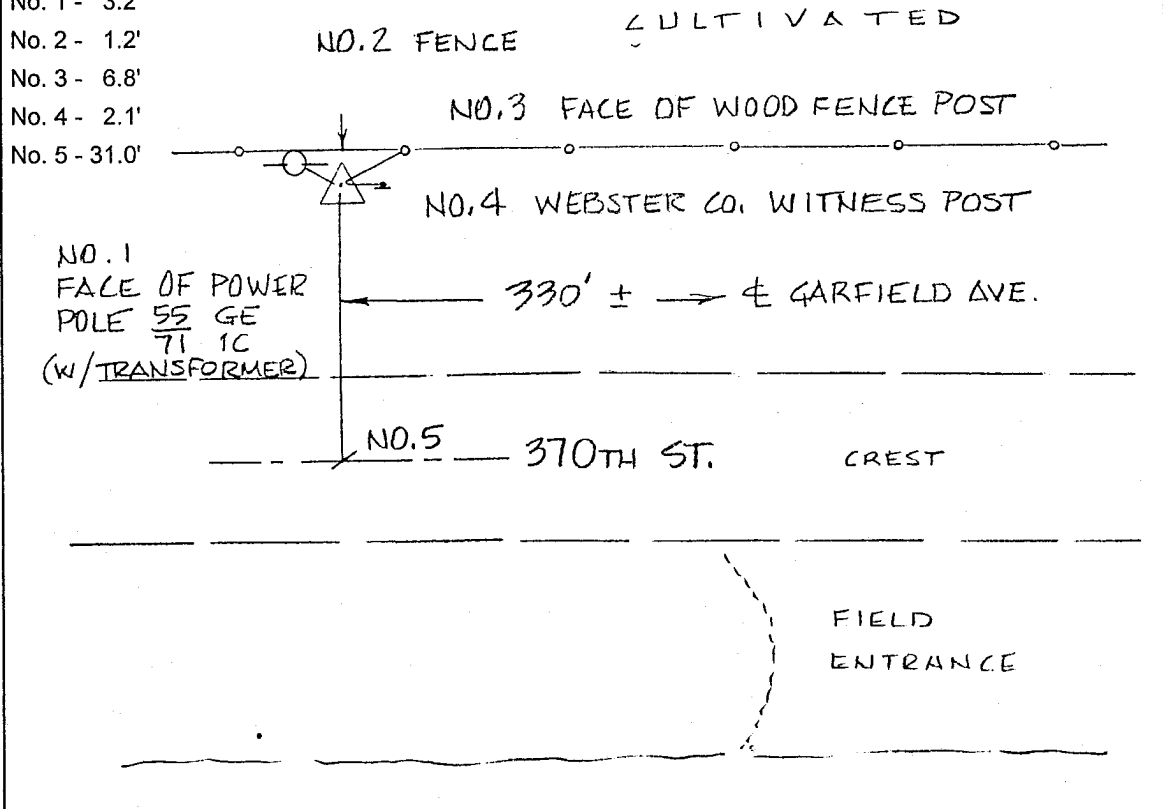
EASTING (X) \_\_\_\_\_ EASTING (X) \_\_\_\_\_

VERTICAL CONTROL ORIGINATED ON 1ST ORDER CONTROL ESTABLISHED BY NATIONAL GEODETIC SURVEY ON NORTH AMERICAN VERTICAL DATUM OF 1988 (NAVD88).

ELEVATION (US FEET) \_\_\_\_\_ ELEVATION (METERS) \_\_\_\_\_

**TIES**

- No. 1 - 3.2'
- No. 2 - 1.2'
- No. 3 - 6.8'
- No. 4 - 2.1'
- No. 5 - 31.0'



SKETCH  
BY DSW  
DENI 9605023